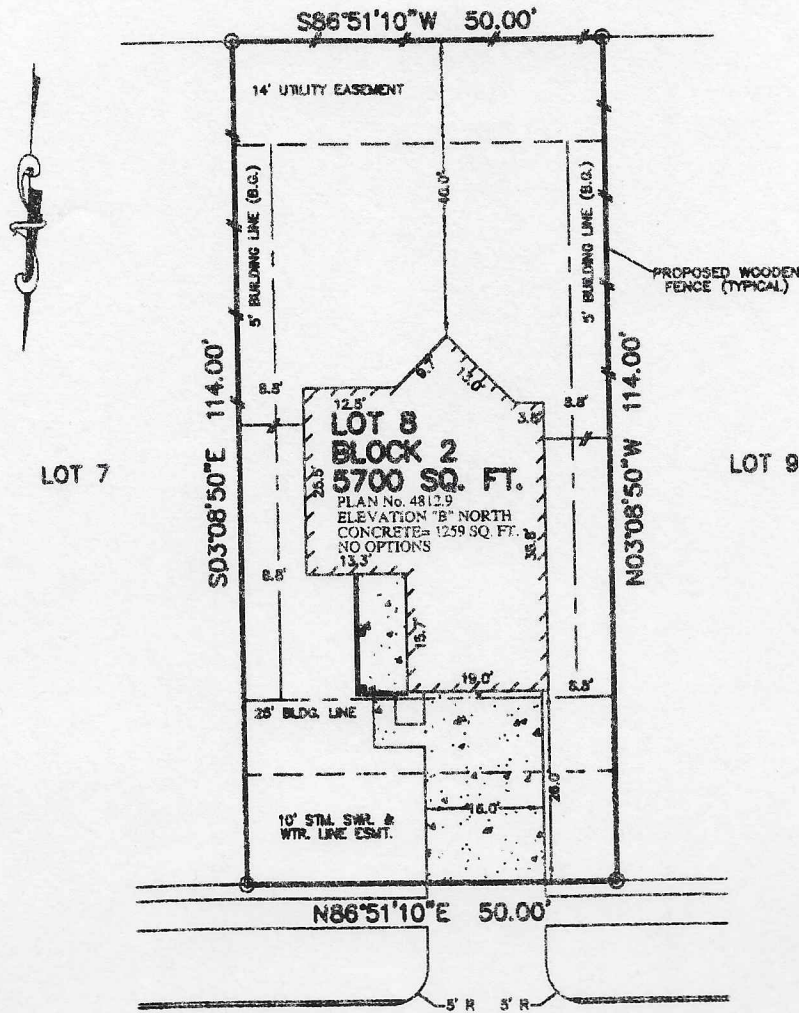


RESTRICTED RESERVE "E"
LANDSCAPE/ OPEN SPACE



EVERHART TERRACE DRIVE
(60' R.O.W.)
28' CONCRETE PAVEMENT

NOTES:

1. ALL BEARINGS SHOWN HEREON ARE BASED ON THE RECORDED PLAT.
2. THIS PLOT PLAN WAS PREPARED WITHOUT BENEFIT OF A TITLE REPORT. THERE MAY BE EASEMENTS, BUILDING LINES & OTHER MATTERS OF RECORD NOT SHOWN HEREON. SURVEYOR OR ALLPOINTS SERVICES CORP. IS NOT LIABLE FOR ANY DAMAGES THAT MAY INCUR IN ANY EVENT THE BUILDER BUILDS ANY IMPROVEMENTS CLOSER THAN 5.0' OR WITHIN AN EASEMENT.

PRELIMINARY ONLY

PLOT PLAN
SCALE: 1" = 20'

LOT COVERAGE: 30 %

©2006, ALLPOINTS SERVICES CORP., ALL RIGHTS RESERVED

FOR: MHI PARTNERSHIP, LTD.
ADDRESS: 2631 EVERHART
TERRACE DRIVE
MHI JOB No.: HGY123
ALLPOINTS JOB No.: 013804 AR
G.F.: (NONE)



ALLPOINTS
SERVICES CORP.
PHONE: 713-468-7707
FAX: 713-827-1861

LOT 8, BLOCK 2,
CREEKMONT, SECTION 1
PLAT No. 20060058, PLAT RECORDS
FORT BEND COUNTY, TEXAS

ISSUE DATE: NOVEMBER 21, 2006

ALLPOINTS SERVICES CORP. - COMMERCIAL/BUILDER DIVISION - 9610 LONGPOINT ROAD, SUITE 160 - HOUSTON, TEXAS 77055