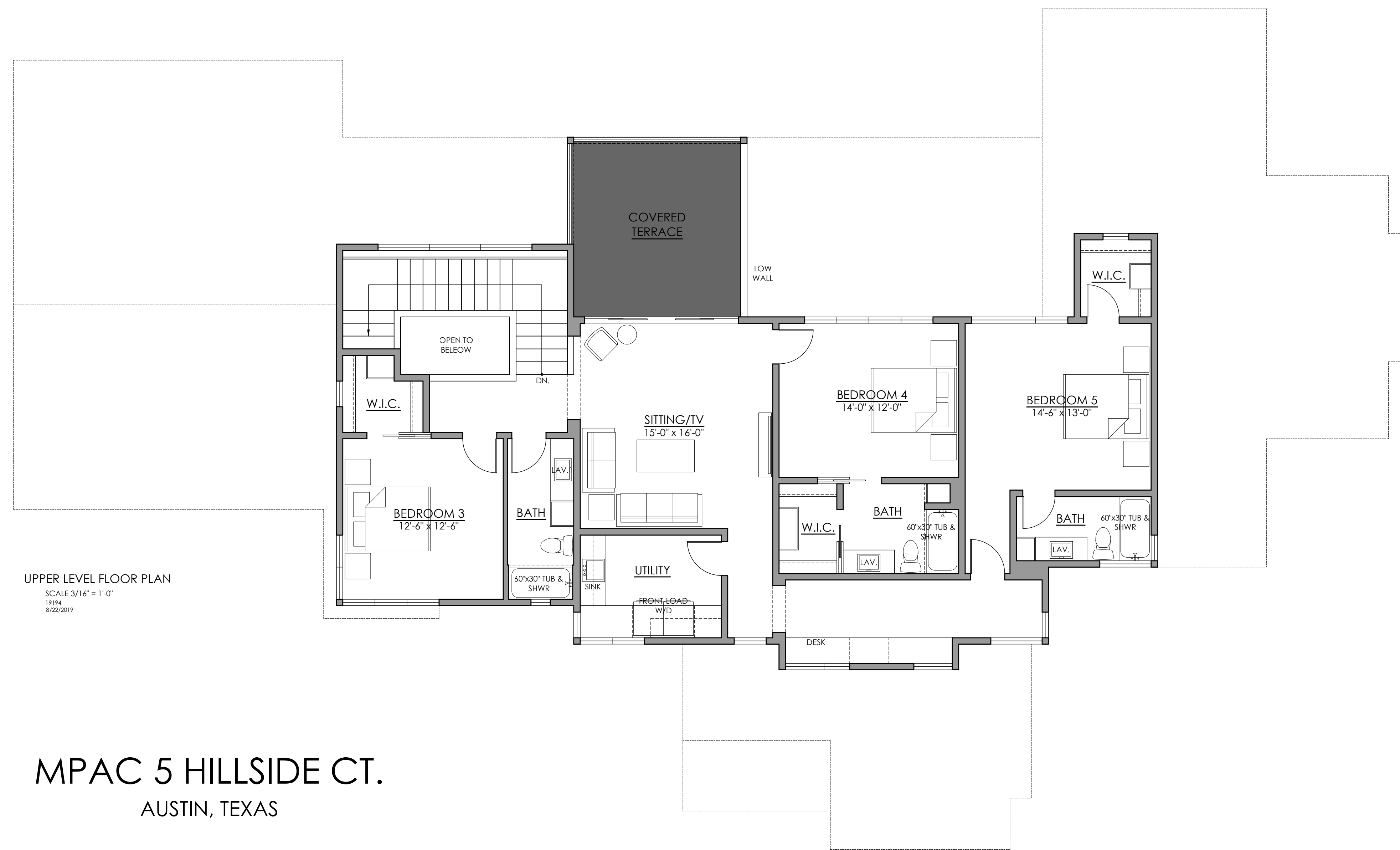


MAIN LEVEL FLOOR PLAN  
 SCALE 3/16" = 1'-0"  
 19194  
 8/22/2019

**MPAC 5 HILLSIDE CT.**  
 AUSTIN, TEXAS

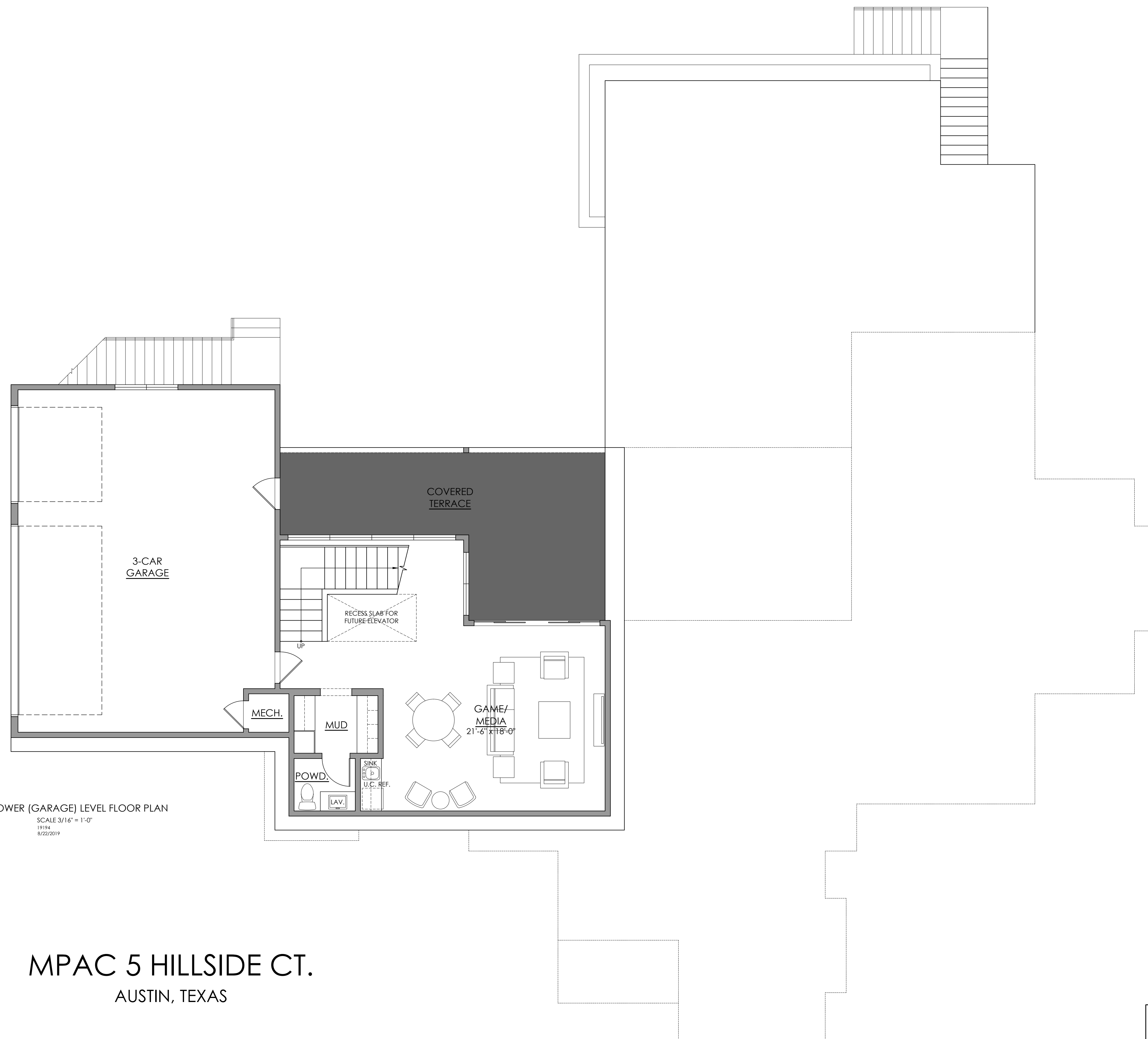
**SQUARE FOOTAGE CALCULATIONS**

MAIN HEATED	3,089 SF
LOWER HEATED	733 SF
UPPER HEATED	1,525 SF
<b>TOTAL HEATED</b>	<b>5,347 SF</b>



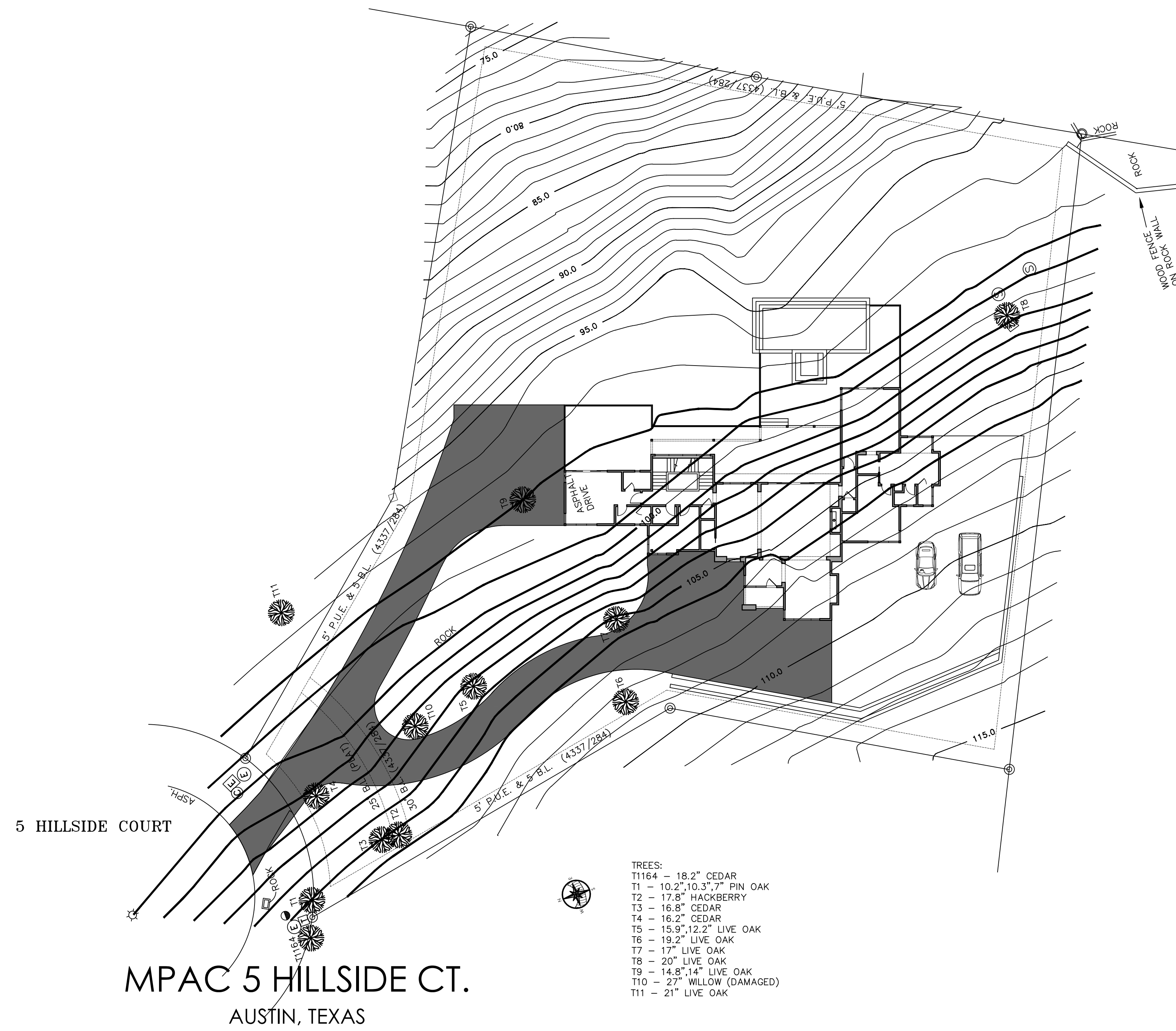
UPPER LEVEL FLOOR PLAN  
 SCALE 3/16" = 1'-0"  
 19194  
 8/22/2019

MPAC 5 HILLSIDE CT.  
 AUSTIN, TEXAS



LOWER (GARAGE) LEVEL FLOOR PLAN  
 SCALE 3/16" = 1'-0"  
 19194  
 8/22/2019

MPAC 5 HILLSIDE CT.  
 AUSTIN, TEXAS



SITE PLAN  
 SCALE 1" = 20'-0"  
 19194  
 8/22/2019