

Based on "113 ac." SW line.

Dewayne O. Davis "20 ac." V. 547 P. 564

Dewayne O. Davis "58 ac." V. 1012 P. 163
J. BALDWIN A-1002

NOTE:
Set 1/2" S.R. at corners unless noted otherwise.

A. WEST A-917

Luether Lewis et al "35 ac." V. 140 P. 495

31.70
~~33.70~~ ACRES

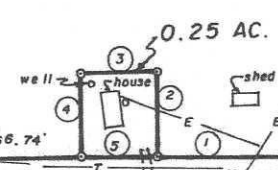
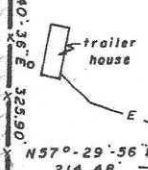
E. OVERALL
A-1048

E. D. Overall "34-1/4 ac." V. 4 P. 121 CSR

Ward K. Davis et al "75 ac." V. 217 P. 07

1.81 AC.
S33°-13'-11"E 55.60'
S56°-46'-49"W 200.00'

- | | | |
|---|---------------|---------|
| 1 | S57°-29'-56"W | 185.00' |
| 2 | N32°-30'-04"W | 108.90' |
| 3 | S37°-29'-56"W | 100.00' |
| 4 | S32°-30'-04"E | 108.90' |
| 5 | N57°-29'-56"E | 100.00' |

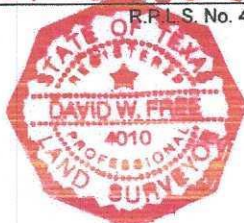


W. cor. "113 ac."
Fnd. 14 Hky. S69°E 76.1'
4" x 4" con. mon.
S32°-09'-17"E 2192.60'

CR 205

Finis Welch et al "113 ac." V. 905 P. 181

David W. Free
David W. Free R.P.L.S. No. 4010



SURVEY PLAT OF 35.76 ACRES IN THE
A. WEST SURVEY, A-917
LEON COUNTY, TEXAS

SCALE: 1" = 200'

MAY 24, 2006

FREE & ASSOCIATES, P.C.
P. O. BOX 317
CENTERVILLE, TEXAS 75833
(903) 536-2554