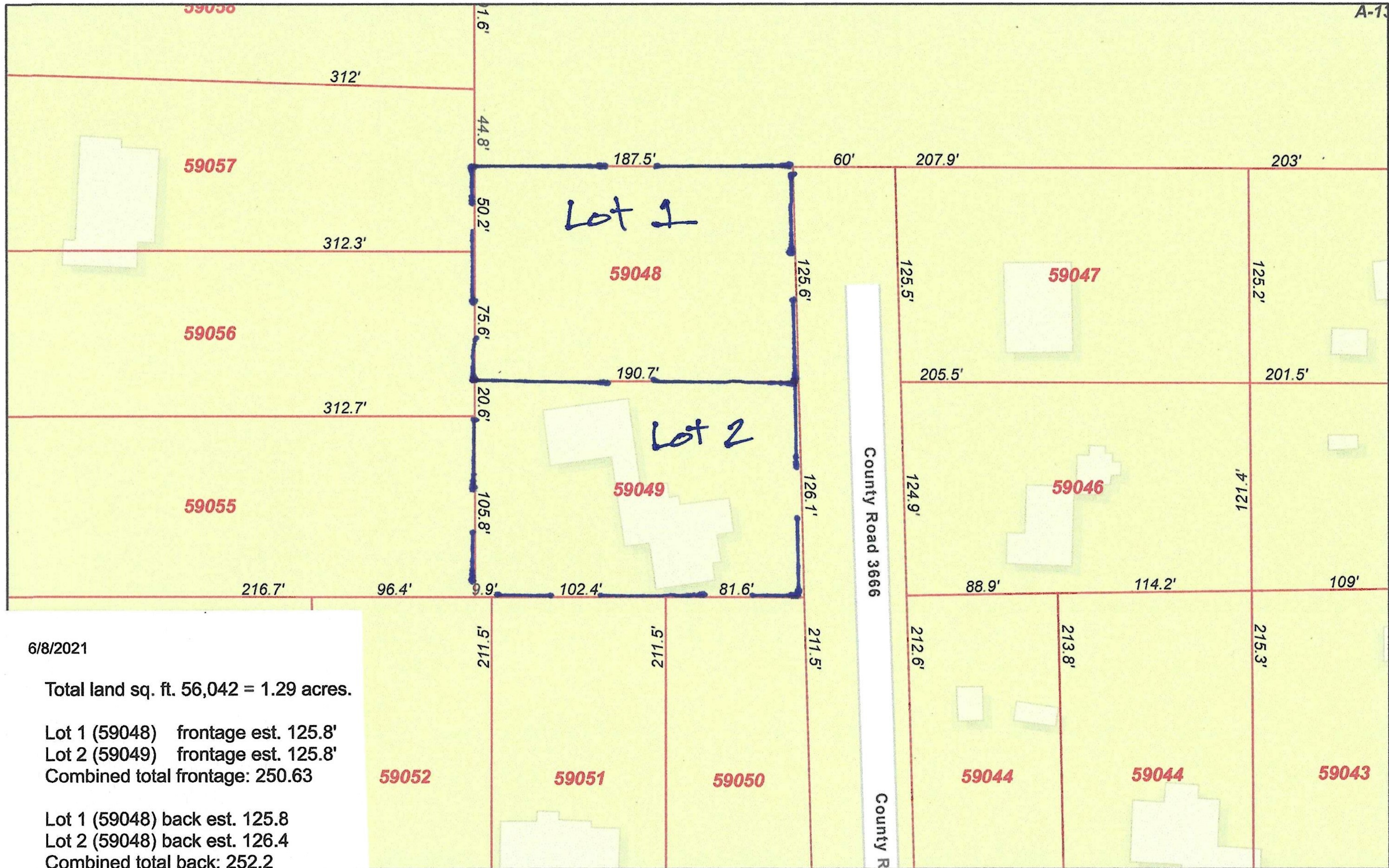


# Liberty CAD Web Map



6/8/2021

Total land sq. ft. 56,042 = 1.29 acres.

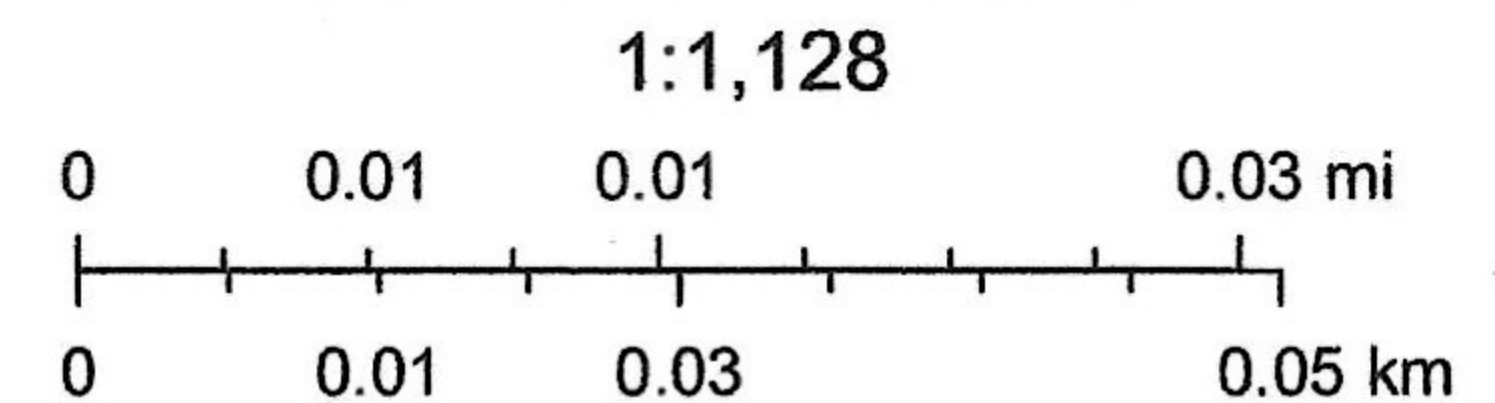
Lot 1 (59048) frontage est. 125.8'  
 Lot 2 (59049) frontage est. 125.8'  
 Combined total frontage: 250.63

Lot 1 (59048) back est. 125.8  
 Lot 2 (59048) back est. 126.4  
 Combined total back: 252.2

Lot 1 - left side: 187.5  
 Lot 1 - right side 190.7

Lot 2 - left side 190.7  
 Lot 2 - left side 193.9

--- Lot Lines



Esri Community Maps Contributors, Montgomery County, TX GIS Office.

Liberty County Appraisal District, BIS Consulting - [www.bisconsulting.com](http://www.bisconsulting.com)

Disclaimer: This product is for informational purposes only and has not been prepared for or be suitable for legal, engineering, or surveying purposes. It does not represent an on-the-ground survey and represents only the approximate relative location of boundaries.