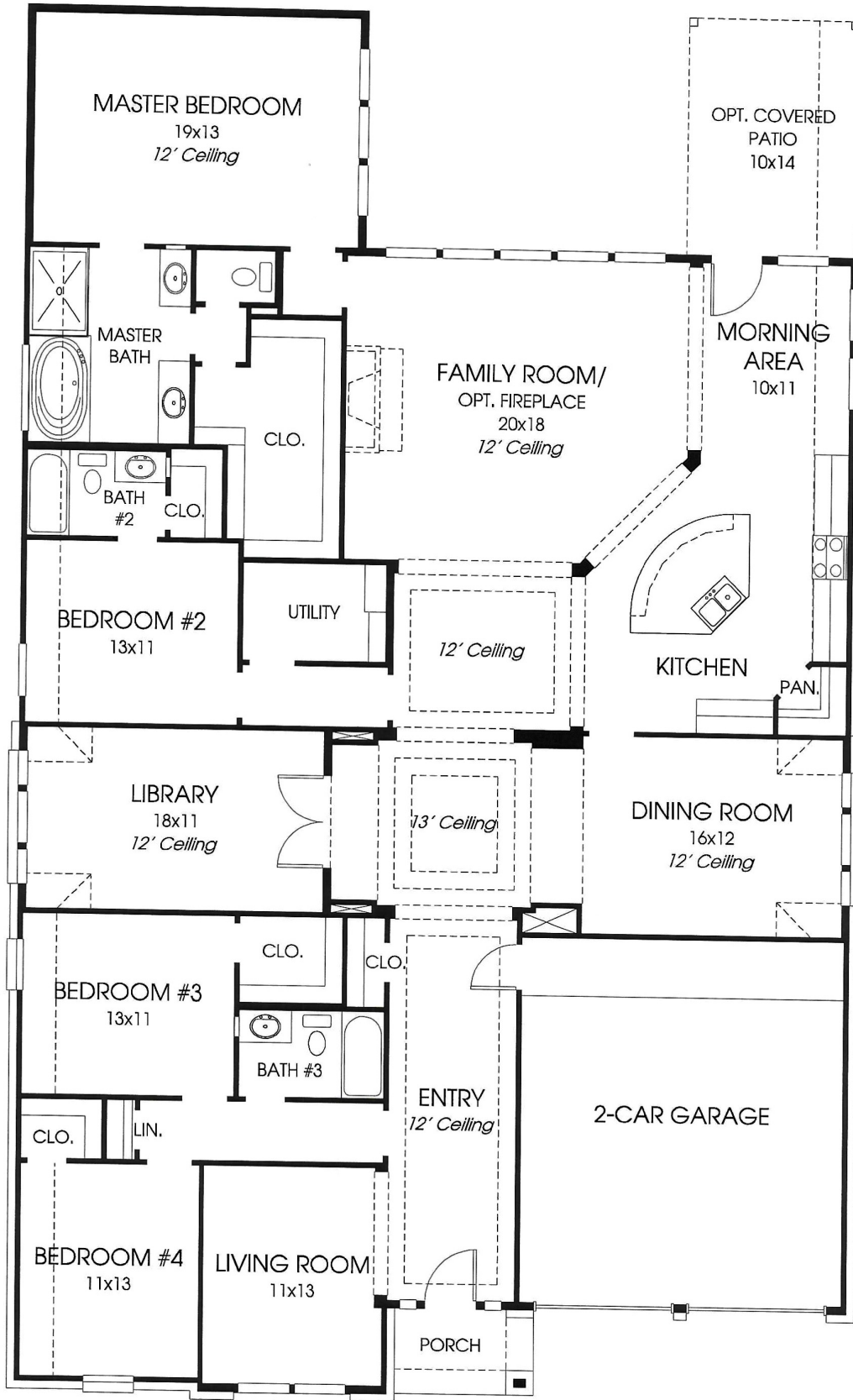


DESIGNS

Design 3021W

This home contains approximately 3,021 square feet and includes four bedrooms and three baths.



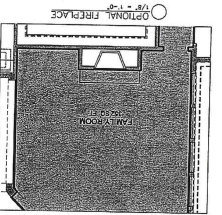
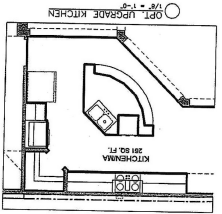
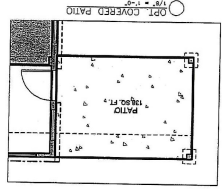
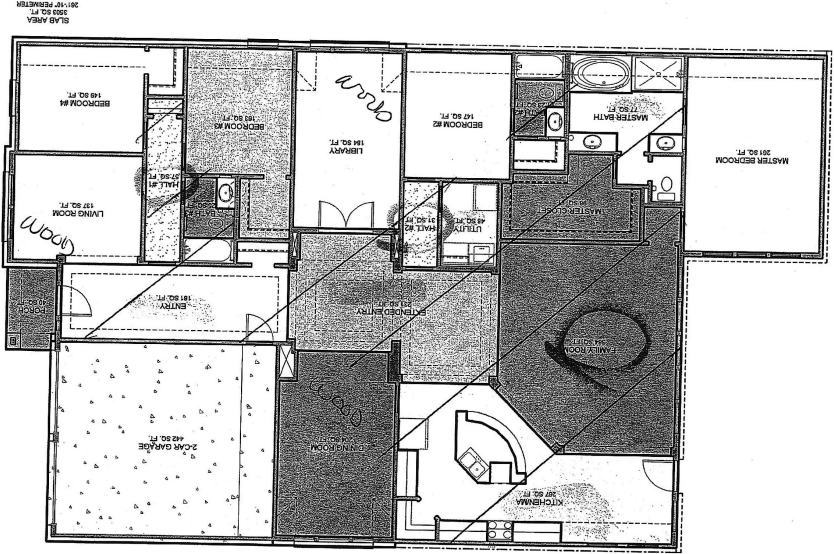
Note: Any options listed on this brochure are available at an additional cost.

Not included: inside keyed deadbolt locks, refrigerators, furnishings, drapery, plants, decorator items and all other personal property being used in model homes. Builder reserves the right to make changes in the plans and specifications, and to substitute material of similar quality. Room dimensions indicate approximate inside area measurements.

10/12/2012 - Perry Homes (60° CL)

PERRY HOMES





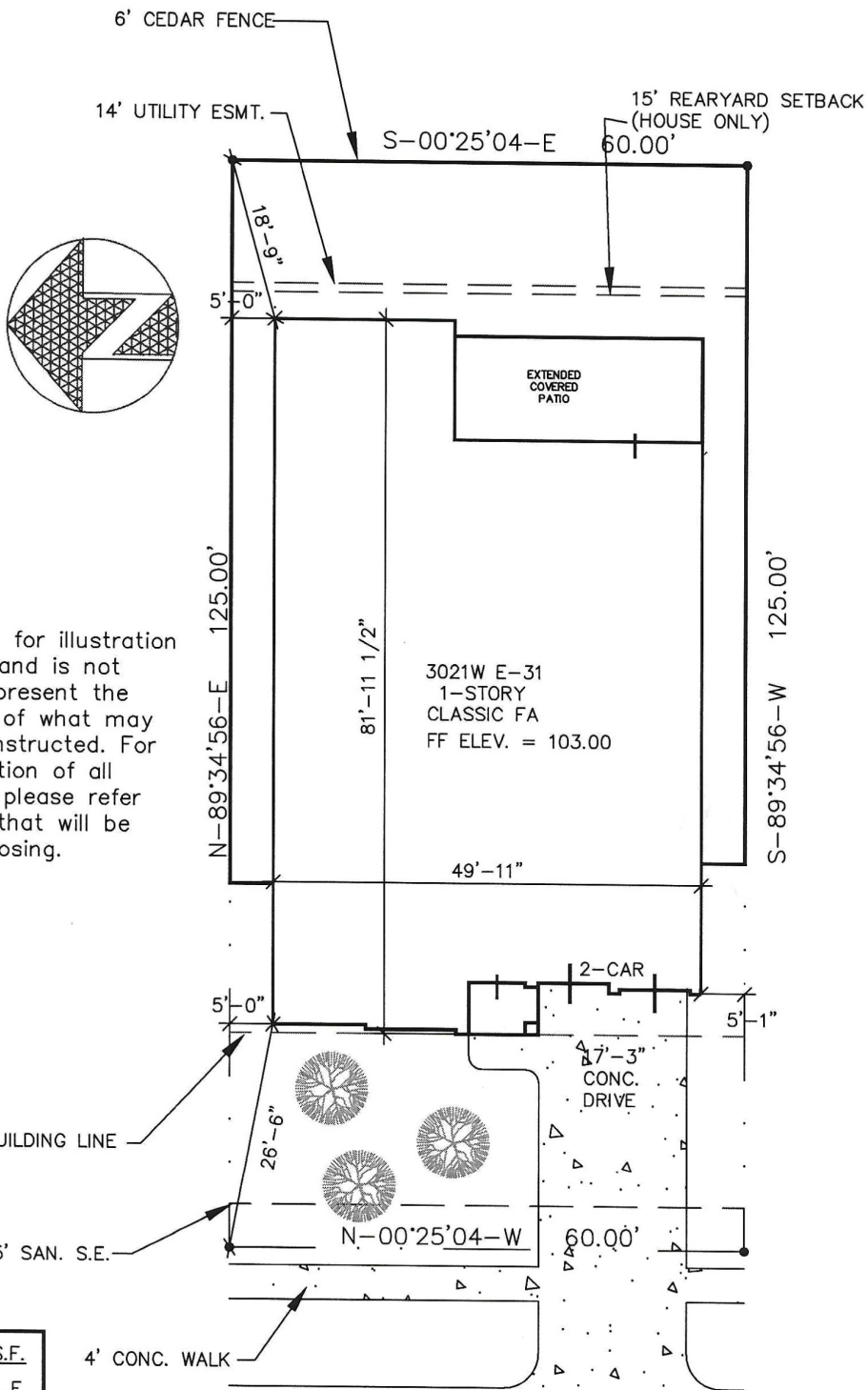
PLAN NO. 3021W
 DATE 3/21/78
 SHEET NO. 6.1
 SHEET TOTAL 6

FLOOR FINISHES

SQUARE FOOTAGE:
 PER ROOM
 TOTAL

PERRY HOMES
 6 - 2013 - PERRY HOMES, INC.
 HOUSTON, TEXAS 77058





This drawing is for illustration purposes only and is not intended to represent the exact location of what may actually be constructed. For the exact location of all improvements, please refer to the survey that will be furnished at closing.

P/D/S 1020	S.F.
B/W+ N/A	L.F.

LOT SIZE=	7500	S.F.
BUILDING COVERAGE=	0.00	S.F.
CONCRETE COVERAGE=	0.00	S.F.
TOTAL=	0.00	S.F. 0.00 %

PERRY HOMES DESIGN

© - 2012 - PERRY HOMES™
ARCHITECTURE & INTERIORS

P.O. BOX 34306

HOUSTON, TEXAS

Address: 2811 PARK HILLS DRIVE		
Lot: 04	Block: 01	Section: 04
Subdivision: FIRETHORNE WEST		Panel No.
City: FORT BEND COUNTY, TEXAS		Job Number: 535121
Scale: 1" = 20'-0"		Drawn By: LWS
Date: 05/17/12 REV. 05/23/12 FW040104		

FEATURES

Features Included in Firethorne, 60' Section

Quality Assurance

- Two year Workmanship Limited Warranty, Ten year Structural Limited Warranty.
- Professionally engineered post-tension foundations inspected at three stages of the foundation process.
- Engineered structural framing inspected and certified on every home.
- Third party quality inspections performed by Burgess Construction Consultants on each home prior to sheetrock and at final stage of construction.
- Third party Home Energy Raters conduct onsite testing and inspections to verify the energy efficiency measures, as well as insulation, air tightness, and duct sealing details on every home.
- Inspections performed by an experienced construction staff at various stages of the construction process.
- All homes are engineered and inspected to meet the wind speed requirements of the International Residential Code.

Green Building and Energy Efficiency

- Designated RESNET Energy Smart Builder with up to 30% or more improvement in energy efficiency over the HERS® reference home. For more information, please visit www.resnet.us.*
- TechShield® radiant barrier sheathing reduces radiant heat from radiating into the attic (not on detached garages).
- High-efficiency 16.0 SEER Carrier air conditioning system with environmentally-sound Puron® Refrigerant.
- ENERGY STAR® labeled GE dishwasher is more energy efficient than non-ENERGY STAR® models.
- Programmable thermostat.
- High-efficiency insulated low-E glass vinyl windows to reduce ultraviolet transmission.
- Energy saving compact fluorescent light bulbs (CFL) installed throughout the home.
- Comodes use 1.6 or less gallons for water conservation.
- Fresh Air Intake System for improved indoor air quality.
- Smoke and carbon monoxide detectors.
- ENERGY STAR® rated reversible ceiling fans with variable speeds in master bedroom and family room.
- Energy-efficient State water heater with Green Choice gas burner reduces nitrogen oxide emissions up to 33% (varies per community).
- Polycel sealant around all windows, doors, pipes, wiring holes, and exterior base plates for improved energy efficiency and comfort.
- Greenguard certified R-13 batt insulation in walls and R-30 blown insulation in all flat ceilings.
- Dow sheathing with a 3.0 R-Value.
- CPVC plumbing system installed for water quality and energy efficiency.
- HardieBacker Cement Board with Moldblock Technology installed in all showers.

Exterior

- 100% brick on first floor.
- Fiber cement siding and soffit with a 25-year limited transferable manufacturer's warranty (varies per plan).
- Brick front porch.
- Lifetime limited warranty architectural shingles – nailed, not stapled.
- Insulated and pinch resistant Wayne Dalton garage doors.
- Beautifully designed front yard landscape package with fully sodded front and back yard.
- Garage door openers.
- Beautiful mahogany front door with leaded glass inserts.
- Kwikset exterior door hardware.
- Breezeway connection on homes with detached garages, including breezeway fence and gate.

Exterior (continued)

- Cedar fence and gate.
- Two-tone paint on exterior of two-story homes.

Interior

- Granite countertops with undermount porcelain sinks in all secondary baths.
- Frieze or Saxony carpet.
- Pre-wired for alarm system.
- Blocked and pre-wired for ceiling fans in secondary bedrooms and game room (varies per plan).
- Second story subflooring, 3/4" tongue and groove, glued and screw shank nailed for smoother floors.
- Structured wiring package with CAT 5 and RG6 wiring.
- Phone and cable provided in all secondary bedrooms.
- Raised two-panel interior doors.
- Wood burning fireplace with cast stone mantel and surround and gas starter (varies per plan).
- Powder room has Delta faucet, pedestal sink, and oval mirror with beveled edges (varies per plan).
- Medicine cabinet in secondary baths.
- Utility room with cabinet, rod, and shelf.
- Ceramic tile flooring in extended entry, powder room, utility room, and secondary baths (varies per plan).
- Wrought iron balusters (varies per plan).

Kitchen

- Granite countertops with ceramic tile backsplash.
- Distinctive 42-inch cabinets with decorative corners, full extension drawer slides, and raised panel doors.
- GE gas cooktop with 30" self cleaning oven with stainless steel finish.
- GE built-in microwave with stainless steel finish.
- GE dishwasher with stainless steel finish.
- Ceramic tile flooring in kitchen/morning area.
- Undermount stainless steel sink with Delta faucet.
- Recessed can lighting.

Master Bath

- Granite countertops with undermount porcelain sinks.
- Built-in garden tub with ceramic tile surround.
- Separate glass enclosed shower with ceramic tile surround and floor.
- Ceramic tile flooring in master bath and commode room.
- Delta faucets.
- Delta Roman tub faucet on garden tub.
- Medicine cabinet in master bath.
- Master bath mirror with beveled accents.

Design Center

- Four (4) hours of complimentary design service to complete your selections.



Builder reserves the right to make changes in the plans and specifications, and to substitute material of similar quality.

*Energy use and costs for all Perry Homes will vary based on a variety of factors such as home type, plan options, features, usage, orientation, site, utility rates, climate and operation of the home. Please contact Perry Homes for more details.

PERRY HOMES

April 5, 2012
(CL-2)(535/400)(60)