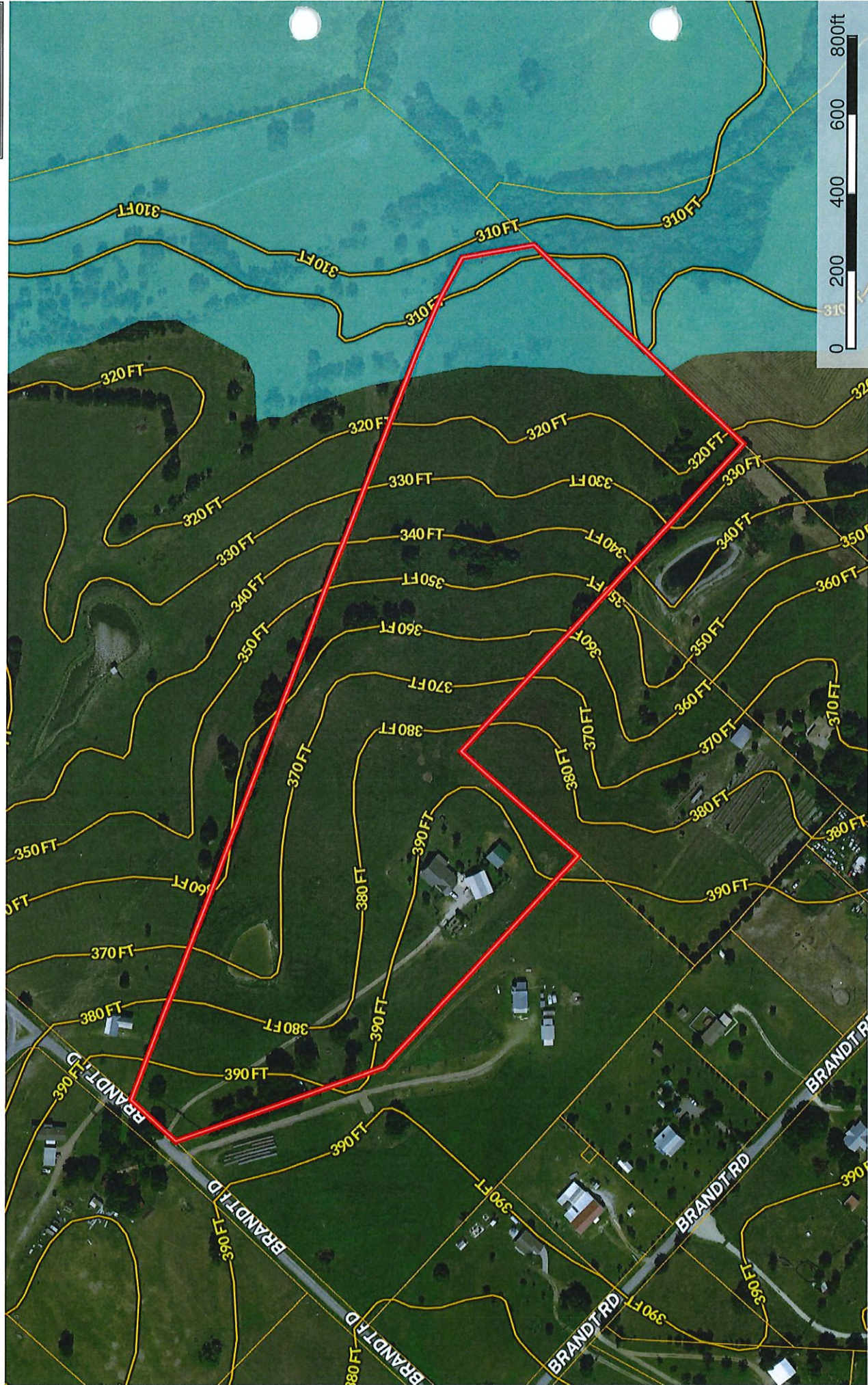


10105 Brandt, Burton
Texas, AC +/-



- Boundary
- 100 Year Floodplain
- 500 Year Floodplain
- Floodway
- Special
- Unmapped / Not

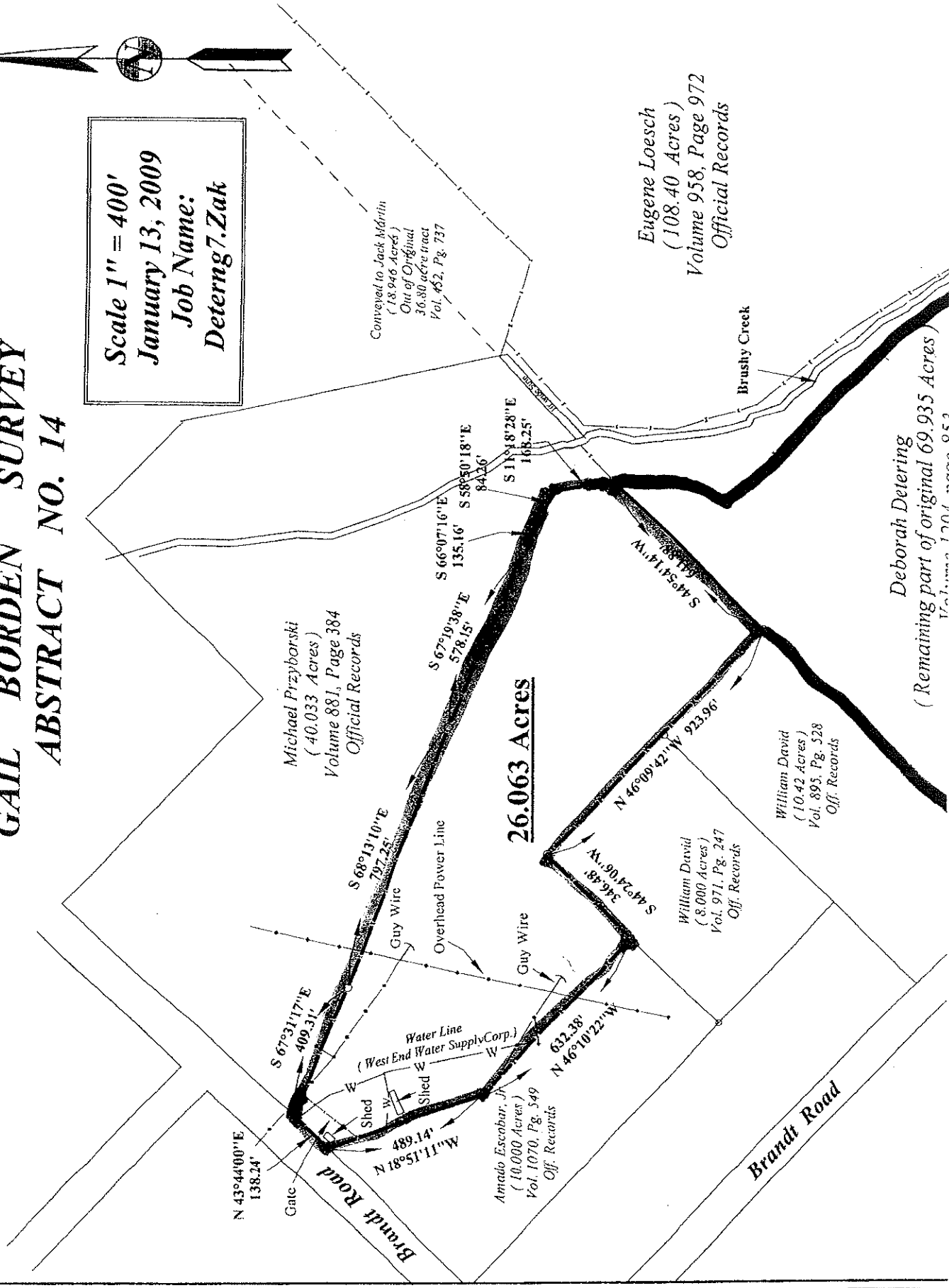


WASHINGTON COUNTY, TEXAS

GAIL BORDEN SURVEY

ABSTRACT NO. 14

Scale 1" = 400'
January 13, 2009
Job Name:
Detering7.Zak



Michael Przyborski
 (40.033 Acres)
 Volume 881, Page 384
 Official Records

26.063 Acres

Eugene Loesch
 (108.40 Acres)
 Volume 958, Page 972
 Official Records

William David
 (8.000 Acres)
 Vol. 971, Pg. 247
 Off. Records

William David
 (10.42 Acres)
 Vol. 895, Pg. 528
 Off. Records

Amado Escobar, Jr.
 (10.000 Acres)
 Vol. 1070, Pg. 549
 Off. Records

Deborah Detering
 (Remaining part of original 69.935 Acres)
 Volume 1707, Page 059

N 43°44'00"E
 138.24'

S 67°31'17"E
 409.31'

S 68°13'10"E
 797.25'

S 67°19'38"E
 578.15'

S 66°07'16"E
 135.16'

S 58°50'18"E
 84.26'

S 11°18'28"E
 108.25'

S 44°54'14"W
 64.58'

N 46°09'42"W
 923.96'

S 44°24'06"W
 346.48'

N 46°10'22"W
 632.38'

N 18°11'15.81"W
 489.14'

N 43°44'00"E
 138.24'

Brant Road

Brushy Creek

Gate

Shed

Shed

Water Line
 (West End Water Supply Corp.)

Guy Wire

Overhead Power Line

Guy Wire

Water Line

Shed

Shed

Gate

Water Line

Overhead Power Line

Guy Wire

Water Line

Shed

Shed

Gate

Water Line

Overhead Power Line

Guy Wire

Water Line

Shed

Shed

Gate