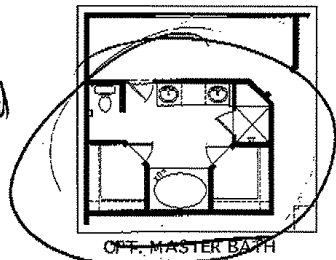
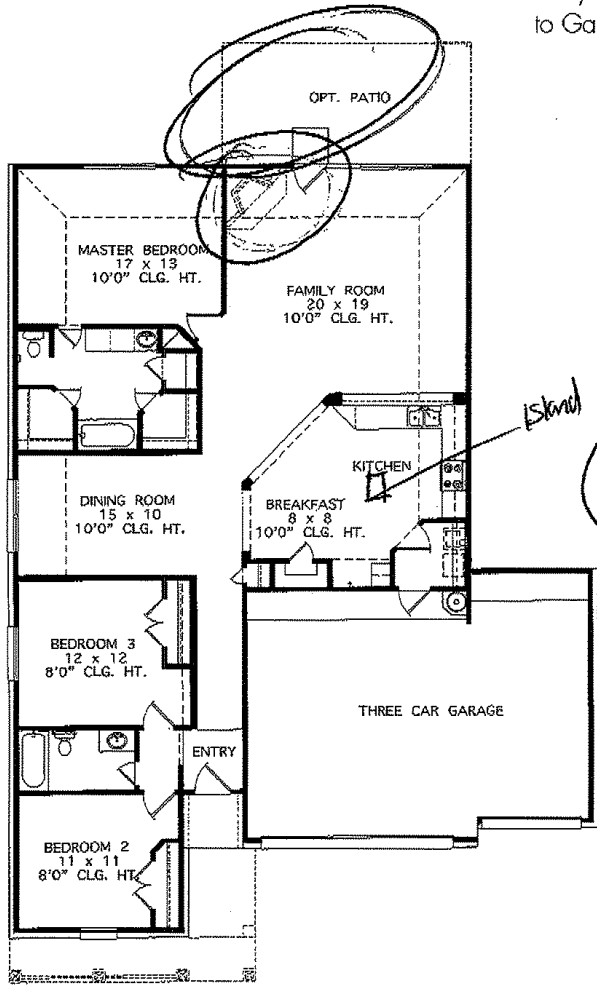




THE YORK • 1,866 Sq. Ft.

- 3 Bedrooms, 2 Baths
- Oversized Kitchen Central to Both Family Room and Dining Room
- Separate His and Her Closets in Master Bedroom
- Utility Room located with Easy Access to Garage



OPT. MASTER BATH

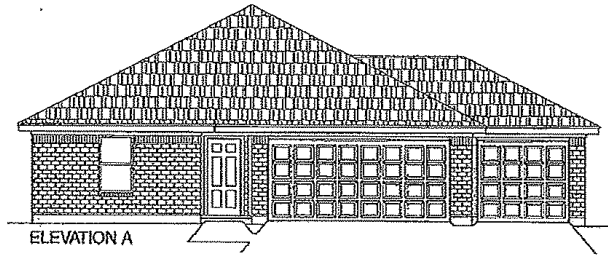
STO

York

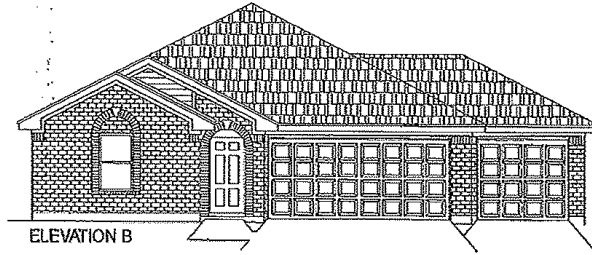
All square footage is approximate. Anglia Homes reserves the right to change specifications and designs without notice. EOLT



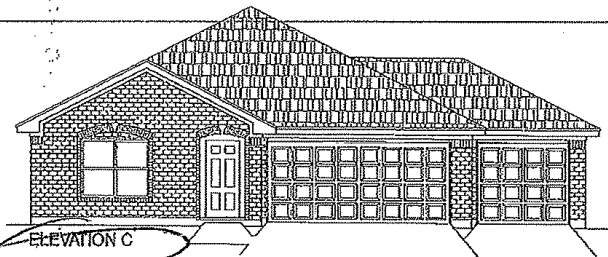
THE YORK • 1,866 Sq. Ft.



ELEVATION A

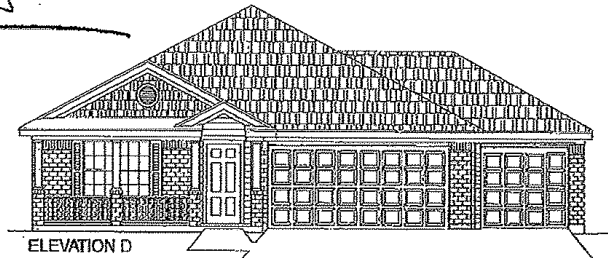


ELEVATION B



ELEVATION C

Handwritten signature and scribbles.



ELEVATION D

All elevations and floor plan renderings may vary due to community specific Deed Restrictions, Building Code Requirements or Subdivision Builder Requirements as listed on Design Feature Sheet.

INTERIOR FEATURES

- Hand Laid Tile in Entry
- Choice of Easy Clean Vinyl
- Sherwin-Williams Paint
- Walk in Closets* with Wood Shelving
- Anglia's Customized Design Package
 - Elegant Arched Doors
 - Upgraded Trim
 - Crown Molding in Entry, Formals and Master Bedroom*
- Rounded Sheetrock Corners
- Designer Brushed Nickel Lighting Package
- Brushed Nickel Lever Hardware
- Telephone Jacks in Kitchen and Master Bedroom
- Cable Outlets in Family and Master Bedroom
- Ceiling Fans in Family Room and Master Bedroom
- All Bedrooms Blocked and Wired for Ceiling Fans
- 9' Ceilings*

KITCHEN FEATURES

- 42" Oak Customized Wall Cabinets with Crown Molding
- Under Cabinet Lighting
- Choice of Job Applied *Wilsonart* Formica Counter Tops
- 12" Tiled Backsplash on Diagonal
- 8" Stainless Steel Sink with Vegetable Sprayer
- Pioneer Fixtures
- Recessed Can Lighting
- Dimmer Switch
- Pantry Light Switch
- GE Black on Black Appliance Package
 - Gas Range
 - Microwave (Direct Vent To Exterior)
 - Dishwasher

OWNERS RETREAT

- Cultured Marble Vanity Top with Choice of Color
- Oak Cabinets to Match Kitchen
- Shower with Glass Door and Marble Garden Tub with 12" Tiled Surround with Accent
- Tile Soap Holder
- Elongated Commode

SECONDARY BATHS

- Cultured Marble Vanity Top with Choice of Color
- Steel Tub with Porcelain Covering
- 12" Tiled Surround
- Oak Cabinets to Match Kitchen
- Porcelain Pedestal Sink in Powder Room*

CONSTRUCTION

- Acme Clay Brick
- Cem plank Lap Siding by James Hardie
- Owens Corning 30 Yr Shingle
- Tongue and Groove Subfloor*
- 3rd Car Garage
- 3 Scheduled Buyer Walks

EXTERIOR FEATURES

- Mahogany 6-panel Entry Door
- Front Gutters
- Coach Lighting for Added Security
- Front Sod
- Full Landscaping Package
- 3 Hose Bibs for Easy Access
- 6' Privacy Fence

ENERGY EFFICIENCY

- 14 SEER A/C Unit
- Radiant Barrier
- White Aluminum Double Pane, Low-E Windows for added Comfort and Savings
- Honeywell Programmable Thermostat
- Insulation
 - Blown R-30 in Flat Areas
 - R-19 Bolts in Slopes
 - R-13 Bolts in Walls
- Electric and Gas Dryer Connections in Utility Room
- PEX Manabloc Plumbing System for Increased Water Efficiency
- 40-Gallon Quick Recovery Gas Water Heater

SECURITY AND COMFORT

- Smoke Detectors throughout Home
- Steel Garage Door
- Pre-Wired for Alarm System
- Professionally Engineered Post-Tension Foundations
- Bonded Builders Warranty
- Independent Third Party Inspections

*Varies Per Plan
Approved by: 05/15/2012

Anglia Homes reserves the right to change specifications and designs without notice.

