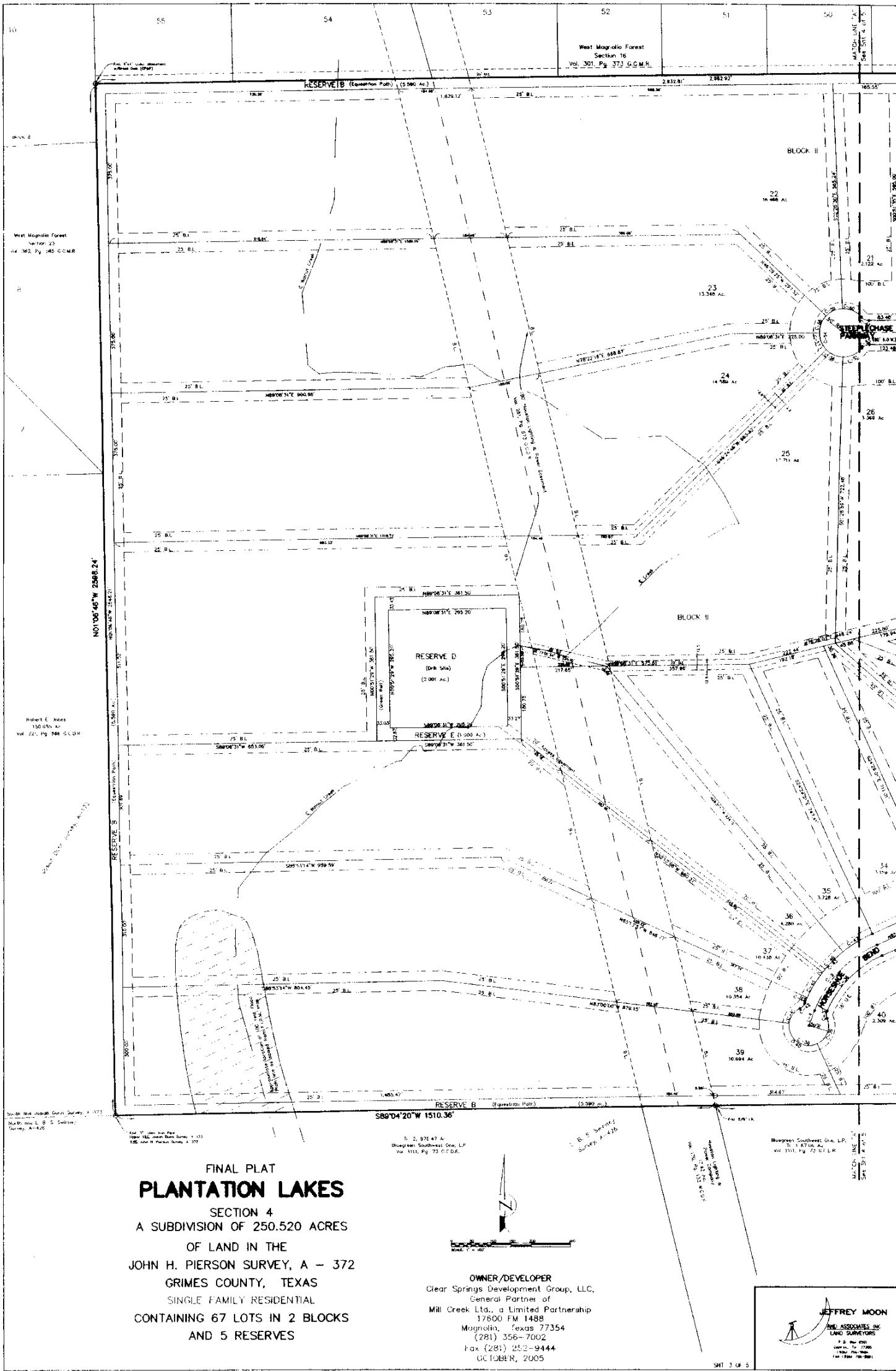


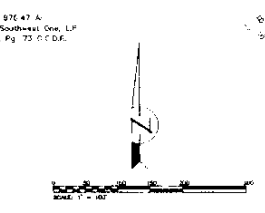
**FINAL PLAT**  
**PLANTATION LAKES**  
 SECTION 4  
 A SUBDIVISION OF 250.520 ACRES  
 OF LAND IN THE  
 JOHN H. PIERSON SURVEY, A - 372  
 GRIMES COUNTY, TEXAS  
 SINGLE FAMILY RESIDENTIAL  
 CONTAINING 67 LOTS IN  
 2 BLOCKS AND 5 RESERVES

**OWNER/DEVELOPER**  
 Clear Springs Development Group, LLC,  
 General Partner of  
 Mill Creek Ltd., a Limited Partnership  
 Magnolia, Texas 77354  
 (281) 356-7002  
 Fax (281) 252-9444  
 OCTOBER, 2005





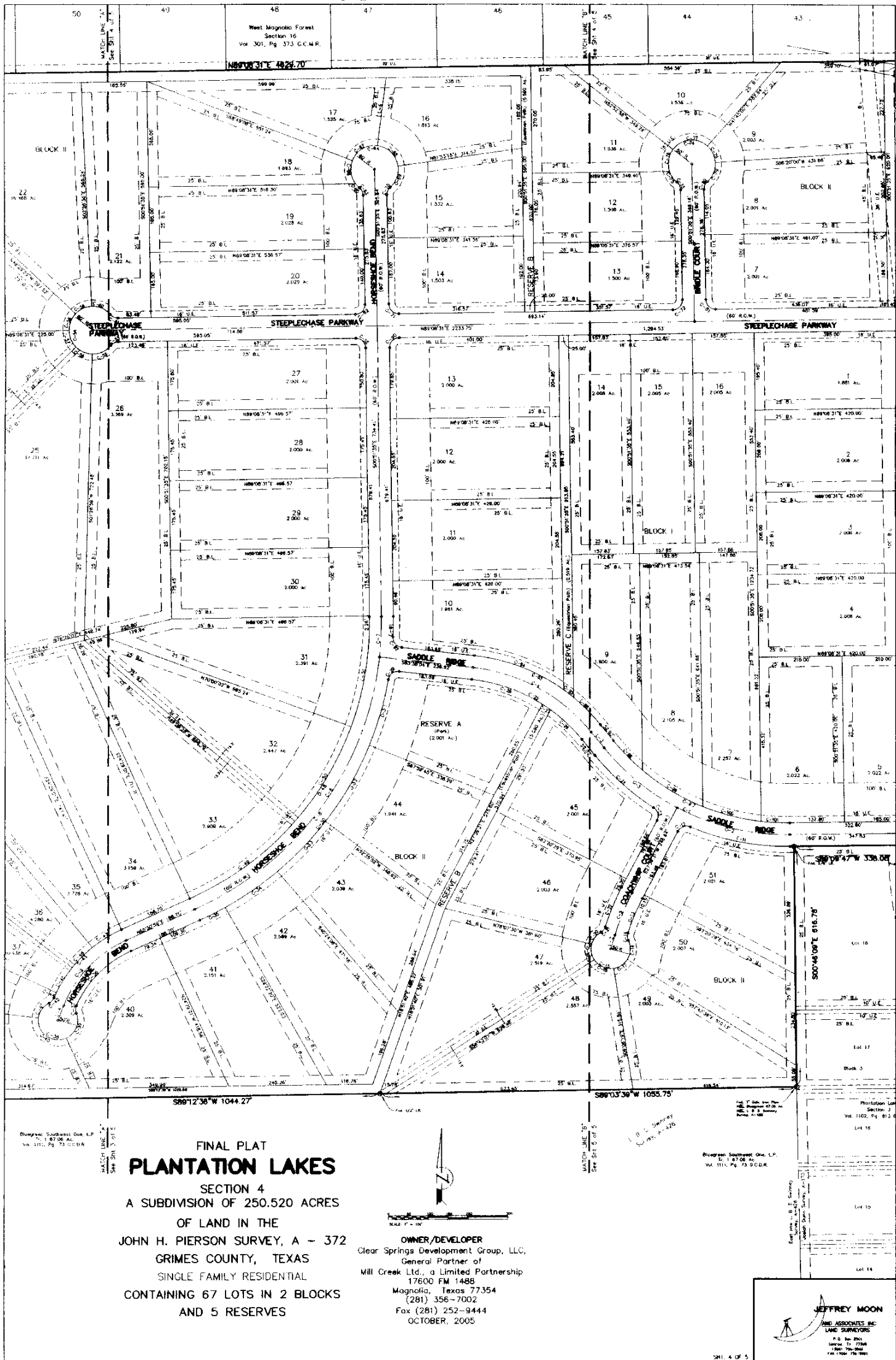
**FINAL PLAT**  
**PLANTATION LAKES**  
 SECTION 4  
 A SUBDIVISION OF 250.520 ACRES  
 OF LAND IN THE  
 JOHN H. PIERSON SURVEY, A - 372  
 GRIMES COUNTY, TEXAS  
 SINGLE FAMILY RESIDENTIAL  
 CONTAINING 67 LOTS IN 2 BLOCKS  
 AND 5 RESERVES



**OWNER/DEVELOPER**  
 Clear Springs Development Group, LLC,  
 General Partner of  
 Mill Creek L.L.C., a Limited Partnership  
 17600 FM 1488  
 Magnolia, Texas 77354  
 (281) 356-7002  
 Fax (281) 252-9444  
 OCTOBER, 2005



**RECORDER'S MEMORANDUM**  
 AT THE TIME OF RECORDATION THIS INSTRUMENT WAS  
 FOUND TO BE INADEQUATE FOR THE BEST PHOTOGRAPHIC  
 REPRODUCTION BECAUSE OF ILLIGIBILITY, CARBON, OR  
 PHOTO COPY, DISCOLORED PAPER, ETC. ALL BLACKOUTS,  
 ADDITIONS AND CHANGES WERE PRESENT AT THE TIME THE  
 INSTRUMENT WAS FILED AND RECORDED.



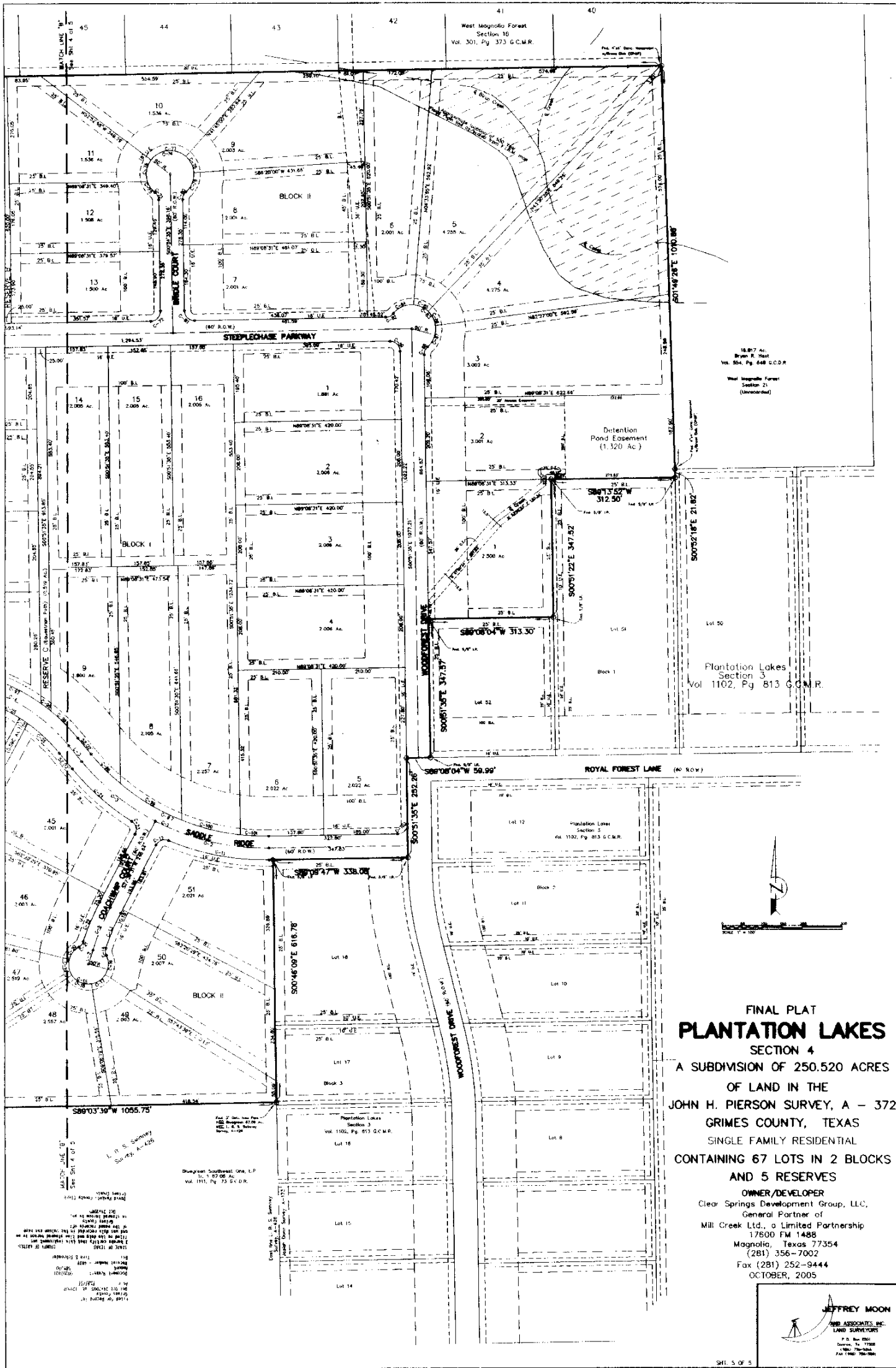
**FINAL PLAT  
PLANTATION LAKES**

SECTION 4  
A SUBDIVISION OF 250.520 ACRES  
OF LAND IN THE  
JOHN H. PIERSON SURVEY, A - 372  
GRIMES COUNTY, TEXAS  
SINGLE FAMILY RESIDENTIAL  
CONTAINING 67 LOTS IN 2 BLOCKS  
AND 5 RESERVES

**OWNER/DEVELOPER**  
Clear Springs Development Group, LLC,  
General Partner of  
Mill Creek Ltd., a Limited Partnership  
17600 FM 1488  
Magnolia, Texas 77354  
(281) 356-7002  
Fax (281) 252-9444  
OCTOBER, 2005

**JEFFREY MOON**  
LAND ASSOCIATES, INC.  
LAND SURVEYORS  
P.O. Box 890  
Canton, TX 77846  
(281) 356-7002  
Fax (281) 252-9444

**RECORDER'S MEMORANDUM**  
AT THE TIME OF RECORDATION THIS INSTRUMENT WAS  
FOUND TO BE INADEQUATE FOR THE BEST PHOTOGRAPHIC  
REPRODUCTION BECAUSE OF ILLIGIBILITY, CARBON, OR  
PHOTO COPY, DISCOLORED PAPER, ETC.. ALL BLACKOUTS,  
ADDITIONS AND CHANGES WERE PRESENT AT THE TIME THE  
INSTRUMENT WAS FILED AND RECORDED.



FINAL PLAT  
**PLANTATION LAKES**  
 SECTION 4  
 A SUBDIVISION OF 250.520 ACRES  
 OF LAND IN THE  
 JOHN H. PIERSON SURVEY, A - 372  
 GRIMES COUNTY, TEXAS  
 SINGLE FAMILY RESIDENTIAL  
 CONTAINING 67 LOTS IN 2 BLOCKS  
 AND 5 RESERVES  
 OWNER/DEVELOPER  
 Clear Springs Development Group, LLC,  
 General Partner of  
 Mill Creek Ltd., a Limited Partnership  
 17500 FM 1488  
 Magnolia, Texas 77354  
 (281) 356-7002  
 Fax (281) 252-9444  
 OCTOBER, 2005



RECORDER'S MEMORANDUM  
 AT THE TIME OF RECORDATION THIS INSTRUMENT WAS  
 FOUND TO BE INADEQUATE FOR THE BEST PHOTOGRAPHIC  
 REPRODUCTION BECAUSE OF ILLIGIBILITY, CARBON, OR  
 PHOTO COPY, DISCOLORED PAPER, ETC.. ALL BLACKOUTS,  
 ADDITIONS AND CHANGES WERE PRESENT AT THE TIME THE  
 INSTRUMENT WAS FILED AND RECORDED.