

CHARLES LEWIS STANFORD
18.88 ACRE TRACT
VOLUME 1492, PAGE 292

LEGEND

- FND. BOUNDARY MARKER
- SET 5/8" IRON ROD
- △ UNMARKED BOUNDARY CORNER



NORTH
SCALE 1"=100'

STONMANNAY BAY
VOLUME 7, PAGE 5 PCPR

E.M. ROAD No. 3186
VOLUME 16, PAGE 27

COMMISSIONERS COURT MINUTES
A=72.21'
A=71.81'
A=72.21'
A=68.77'
A=71.78'
A=71.41'
A=71.41'
A=71.54'
A=71.57'

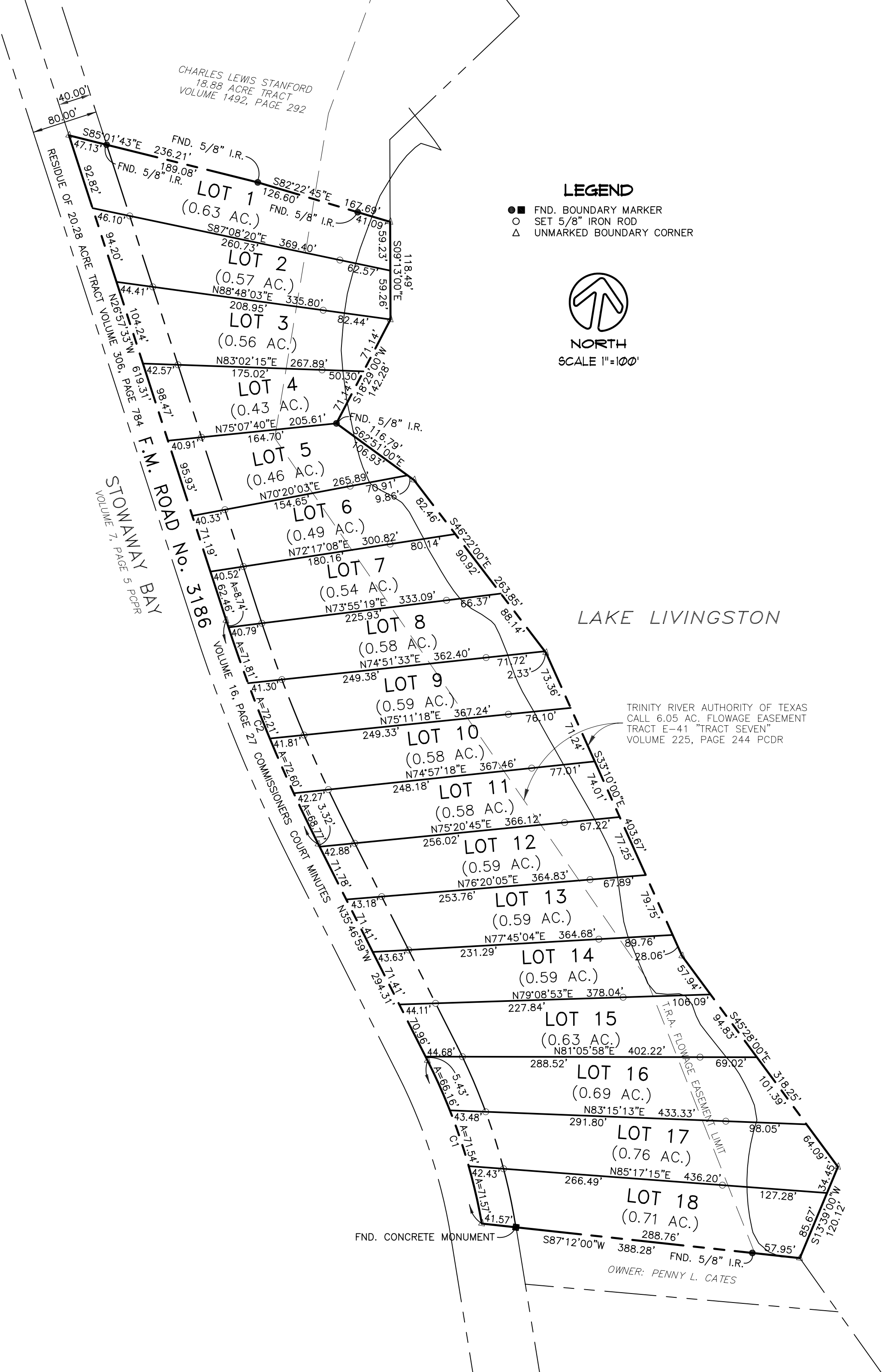
LAKE LIVINGSTON

TRINITY RIVER AUTHORITY OF TEXAS
CALL 6.05 AC. FLOWAGE EASEMENT
TRACT E-41 "TRACT SEVEN"
VOLUME 225, PAGE 244 PCDR

T.R.A. FLOWAGE EASEMENT LIMIT

FND. CONCRETE MONUMENT

OWNER: PENNY L. CATES



LOT 1 (0.63 AC.)
LOT 2 (0.57 AC.)
LOT 3 (0.56 AC.)
LOT 4 (0.43 AC.)
LOT 5 (0.46 AC.)
LOT 6 (0.49 AC.)
LOT 7 (0.54 AC.)
LOT 8 (0.58 AC.)
LOT 9 (0.59 AC.)
LOT 10 (0.58 AC.)
LOT 11 (0.58 AC.)
LOT 12 (0.59 AC.)
LOT 13 (0.59 AC.)
LOT 14 (0.59 AC.)
LOT 15 (0.63 AC.)
LOT 16 (0.69 AC.)
LOT 17 (0.76 AC.)
LOT 18 (0.71 AC.)