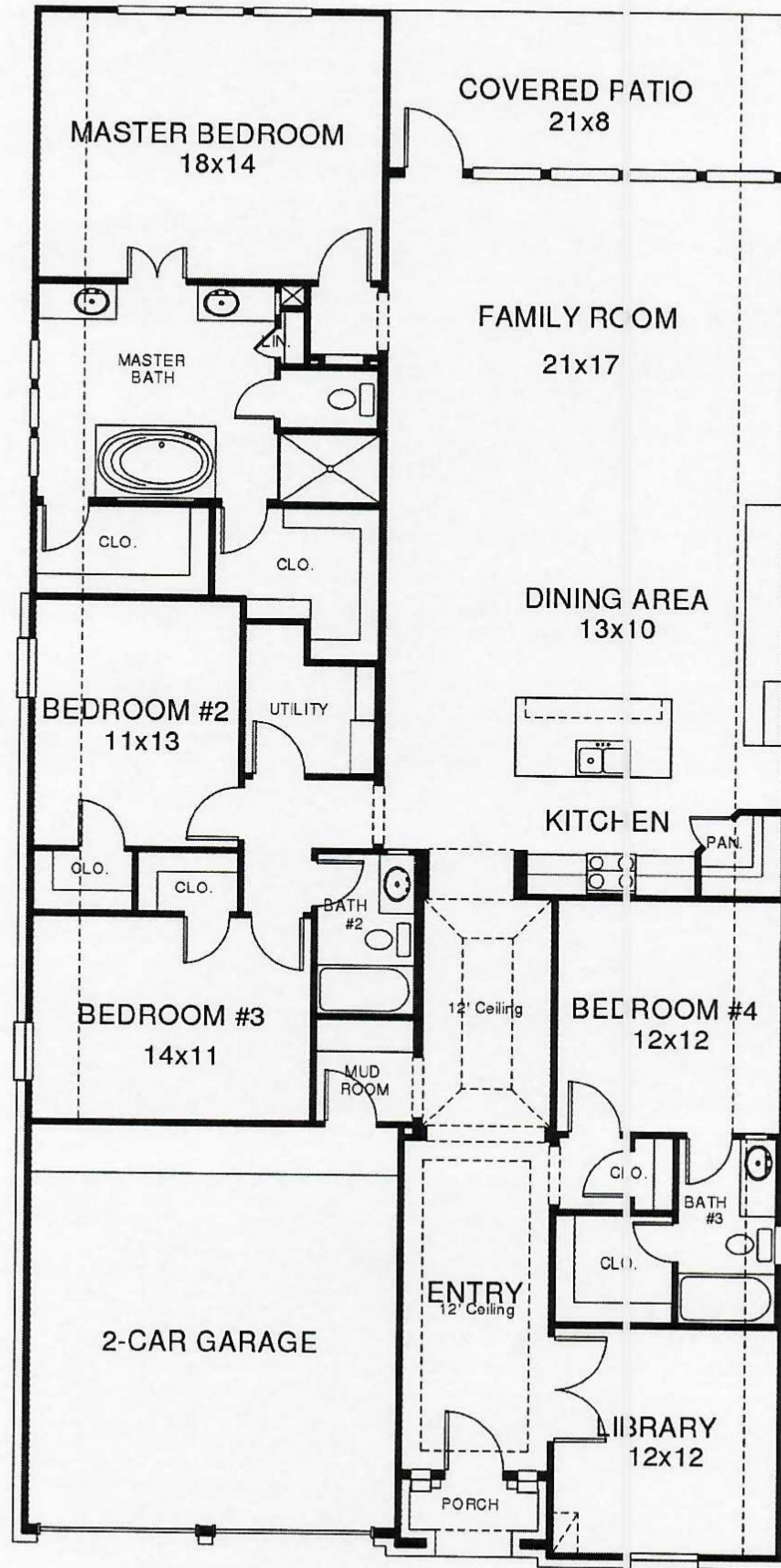


# PERRY HOMES

2504W

2,504 SQ. FT. :: 1 FLOOR :: 4 BED :: 3 BATH :: 2-3 GARAGE

FIRST FLOOR



Please call 1-800-247-3779 or contact a Sales Professional in a Perry Homes Sales Center with any questions.

This design, as originally designed and prior to any personalization you make, is estimated to yield approximately the number of square feet shown above. All dimensions are approximate. Square footage may vary based on as-built dimension, configurations, plan options and/or the method of calculation.

Designs are not-to-scale, and are conceptual illustrations that may differ from construction plans or completed improvements. A design may depict features not available on all homesites or in all communities. This rendering is the property of Perry Homes, LLC. Any reproduction or exhibition is strictly prohibited.

© Perry Homes, LLC 2019

For more information (including office hours & driving directions), visit our website at [www.PERRYHOMES.com](http://www.PERRYHOMES.com)

## 4503 Primrose Valley Lane

### Upgrades

- 8 zone irrigation system
- Security System
- Living room TV wired wall mount w/insulation
- Living room surround sound (4 speakers)
- Smart home switches in kitchen, living room, primary bedroom, foyer, rear porch cans and rear spot lights
- Walk-in shower in guest bedroom with attached bath with ceramic tile
- Upgraded bathroom faucets (brushed stainless) throughout all 3 full baths
- Upgraded Craftsman Front Door with brushed stainless handles
- Newly landscaped front yard with Celebrity Bermuda grass and flower beds
- Second standard size refrigerator/freezer in laundry room
- Upgraded kitchen Blanco colored sink (16x30)
- Upgraded GE Top Control w/Stainless Steel interior dishwasher w/ sanitize cycle and dry boost fan assist