

GRAPHIC SCALE - FEET



Lot 7-A  
(Call - N70°47'E, 70')  
N 75°12'20"E 70.04'

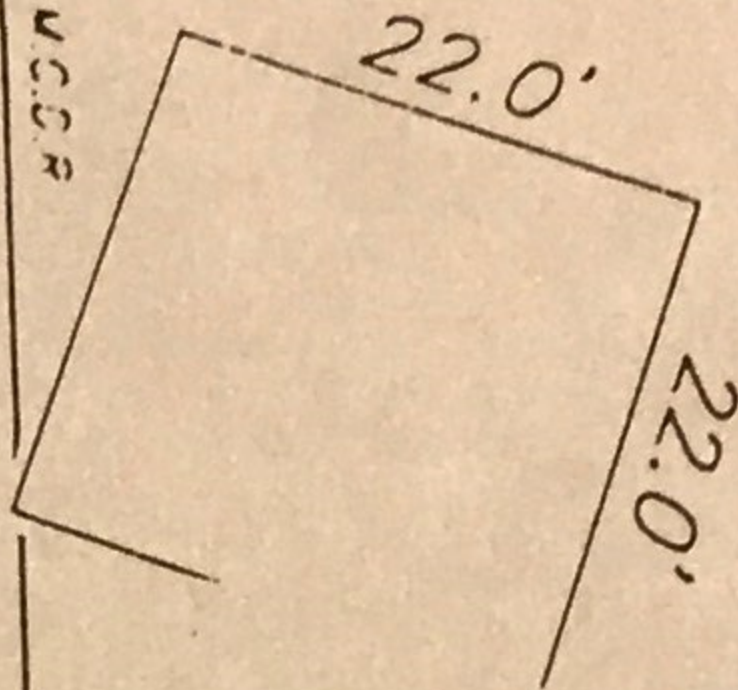
Lot 7-B  
Fnd. 1/2" I.R. (Call - N70°47'E, 70') Fnd. 3/4" I.P.  
N 73°49'45"E 70.13'

Lot 7-C

5' B.L. C.F. 19422548 M.C.D.R.

LOT 8-B  
BLOCK 4

Basis of bearings is record bearing (S89°20'W) of the north line of Glenoak Street, as found monumented on the ground in front of Lots 12, 14, & 16.



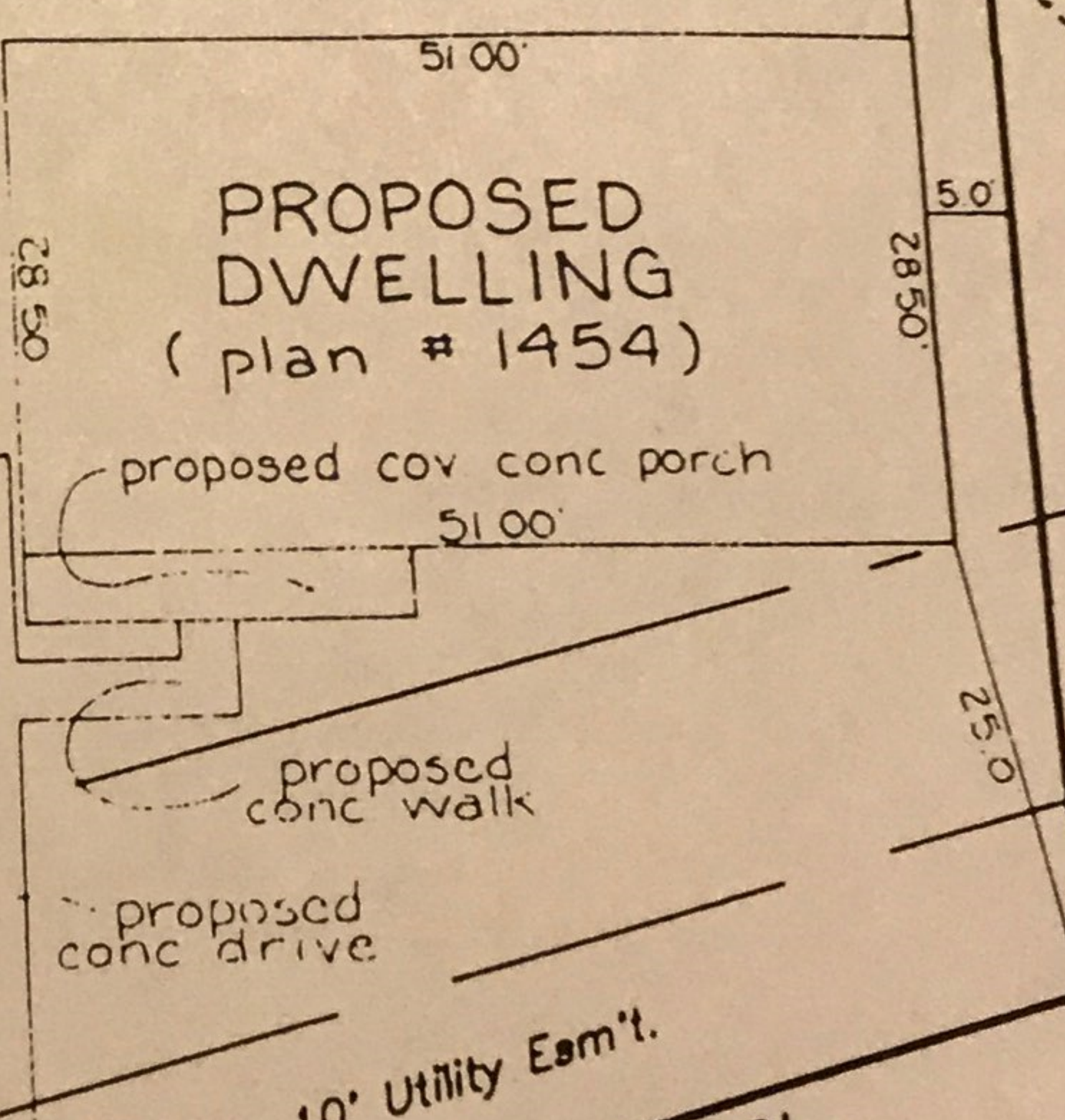
N 00°09'29"W 144.21'  
(Call - N00°20'W, 144')

LOT 8-A

S 00°12'17"E 145.52'  
(Call - S00°20'E, 144')

Lot 8-C

PROPOSED DWELLING  
(plan # 1454)



proposed cov conc porch  
51.00'

proposed conc walk  
28.50'

proposed conc drive  
25.0'

10' Utility Eas't.

S 74°52'56"W 69.89'  
(Call - S70°47'W, 70')

BRIAR CLEFF STREET (60' R.O.W.)

S 74°52'56"W 69.89'  
(Call - S70°47'W, 70')

Set 1/2" I.R.

69'W x 144'D

LARGE HOMES, L.P.