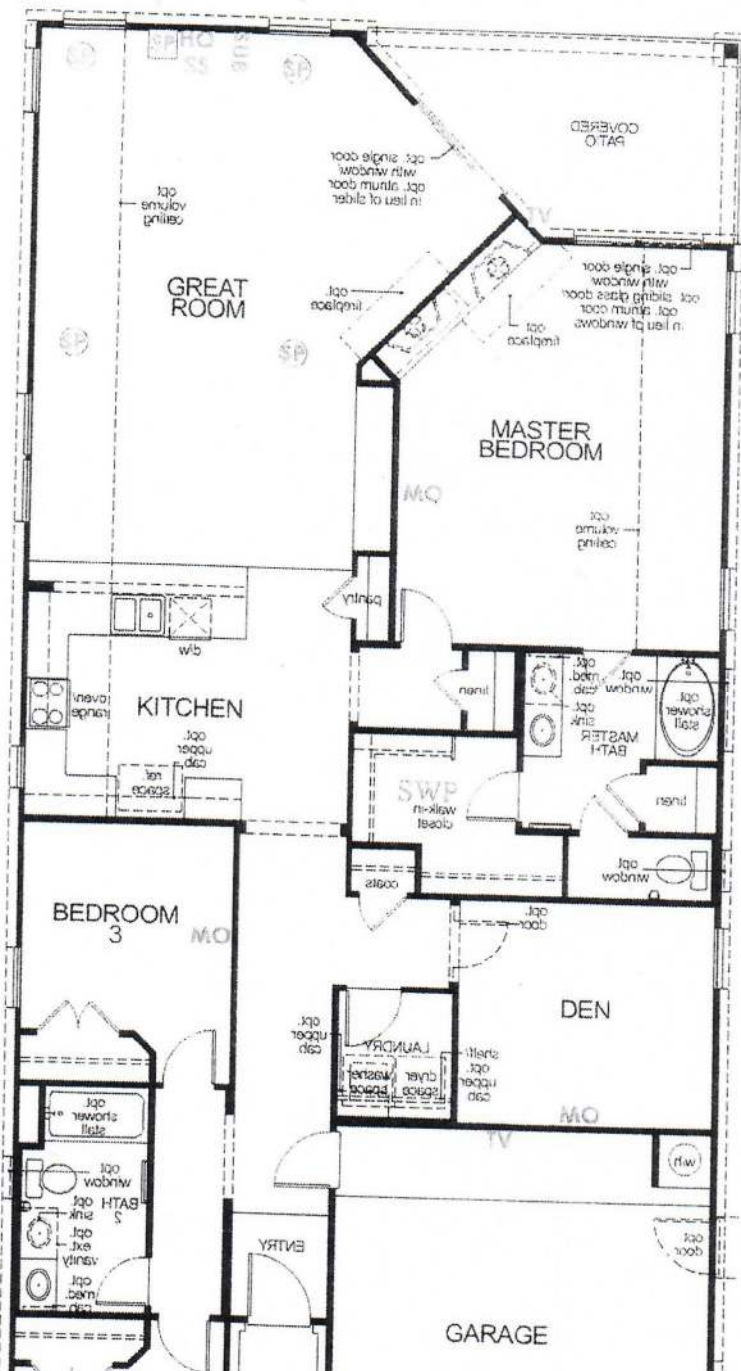




HOMEPRO

25410 Addleston Drive



Handwritten scribbles

- MO - Media Outlet (1 RG6/1 CAT5e)
- TV - TV Location (1 RG6)
- DATA - Phone or DATA (1 CAT5e)
- ENT - Home Entertainment (1 CAT5e/2 RG6)
- UD - Home Outlet (2 CAT5e/1 RG6)
- UNV - Universal Outlet (2 CAT5e/2 RG6)
- NO - Network Outlet (3 CAT5e/1 RG6)
- SP - Speaker Prewire
- IC - In-Ceiling Speaker Prewire
- IS - In-Wall Speaker Prewire
- AS - Atmos Speaker Prewire
- SUB - Subwoofer (1 RG6)
- SS - Surround Sound Prewire Homomix
- DVC - Digital Volume Control **Prewire Only**
- SSP - Stereo Speaker Prewire Homomix
- HDMI - HDMI Bundle (2 HDMI/2 CAT5e Trimmed)(Conduit)
- W - HDMI Bundle Non-Trimmed Location
- PROJ - Projector Bundle (2 HDMI/2 CAT5e Trimmed)(Conduit)
- SWP - Structured Wiring Panel
- PC - Projector Bundle Homomix
- EL - Electrical Outlet (110 Volt)
- CLB - Ceiling Location
- GLB - Garage IWB Homomix
- CLB - Ceiling DVB Homomix
- CON - Conduit (Installed next to electrical)
- CON - Conduit Homomix
- 3 - Runs of Cable Bundles
- 2 - Runs of Cable Homomix
- MD - Motion Detector
- RP - Keypad
- SB - Glass Break Detector
- LF - Lighting Zone (1 Light switch)
- AP - Home Automation Panel Prewire
- WAF - Wireless Access Point Prewire (1 CAT5e)
- MAG - Central Vac Master Location
- INT - Intercom Station Prewire
- INT - Intercom Master Unit
- RS - Rock Speaker
- IR - IR Control
- OU - Overhead Garage Swing
- HH - Hammer Head
- SWP2 - Structured Wiring Panel 2
- TUX - Inside Keypad
- TVX - TVX Cable of Approx 2
- RP - Network (2 CAT5e)