

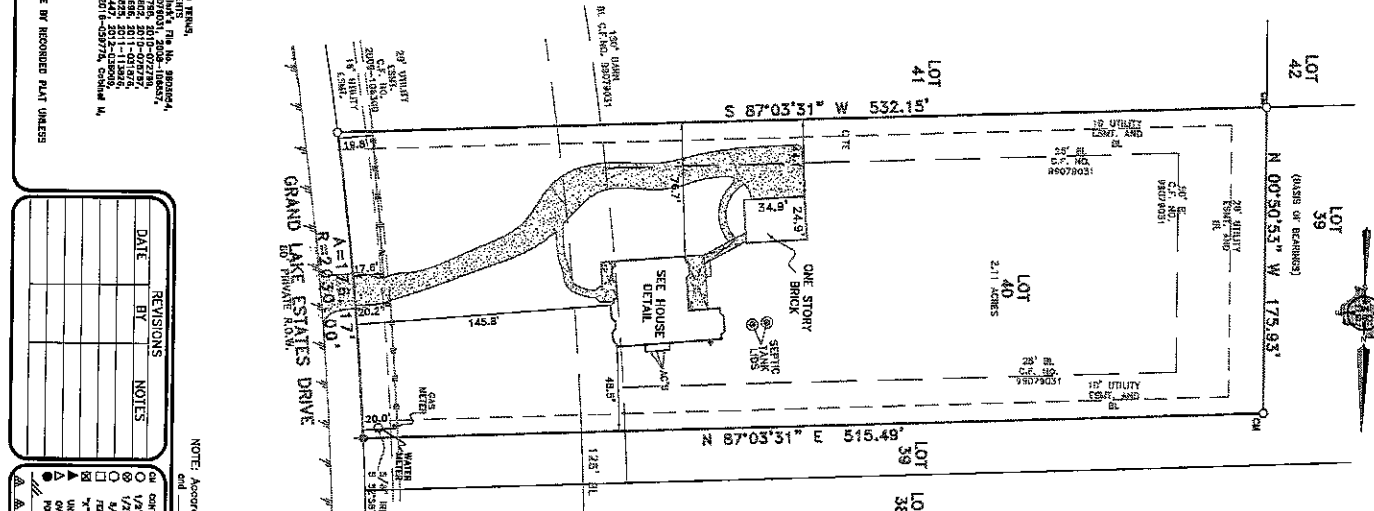
**Survey Required
and Accepted By:**

_____ Date _____

8720 Grand Lakes Estates Drive
 Block Lot (40), Block Two (2), of GRAND LAKE ESTATES, SECTION ONE (1), a subdivision of 168.90± Acres Part of the William F. Cartwright Survey, A-134, The Jacob Eberly Survey, A-194, Part of the John B. Cartwright Survey, A-172, and The Charles Bugart Survey, A-177 in Montgomery County, Texas, as shown on the Map of said tract recorded in Cobbler M. Sheet 180 of the Map Records of Montgomery County, Texas.



stewart title
Real partners. Real possibilities.™



NOTE: PROPERTY SURVEYED BY OTHER SURVEYORS IS IDENTIFIED BY SHADING THE NEARBY CORNERS AND EASEMENTS THEREON.
 2008-04-19/20, 2008-07-24/14, 2010-07-27/05, 2010-07-27/10, 2009-08-27/22, 2010-01-10/28, 2010-01-10/29, 2010-07-27/11, 2010-07-27/12, 2010-07-27/13, 2010-07-27/14, 2010-07-27/15, 2010-07-27/16, 2010-07-27/17, 2010-07-27/18, 2010-07-27/19, 2010-07-27/20, 2010-07-27/21, 2010-07-27/22, 2010-07-27/23, 2010-07-27/24, 2010-07-27/25, 2010-07-27/26, 2010-07-27/27, 2010-07-27/28, 2010-07-27/29, 2010-07-27/30, 2010-07-27/31, 2010-07-27/32, 2010-07-27/33, 2010-07-27/34, 2010-07-27/35, 2010-07-27/36, 2010-07-27/37, 2010-07-27/38, 2010-07-27/39, 2010-07-27/40, 2010-07-27/41, 2010-07-27/42, 2010-07-27/43, 2010-07-27/44, 2010-07-27/45, 2010-07-27/46, 2010-07-27/47, 2010-07-27/48, 2010-07-27/49, 2010-07-27/50, 2010-07-27/51, 2010-07-27/52, 2010-07-27/53, 2010-07-27/54, 2010-07-27/55, 2010-07-27/56, 2010-07-27/57, 2010-07-27/58, 2010-07-27/59, 2010-07-27/60, 2010-07-27/61, 2010-07-27/62, 2010-07-27/63, 2010-07-27/64, 2010-07-27/65, 2010-07-27/66, 2010-07-27/67, 2010-07-27/68, 2010-07-27/69, 2010-07-27/70, 2010-07-27/71, 2010-07-27/72, 2010-07-27/73, 2010-07-27/74, 2010-07-27/75, 2010-07-27/76, 2010-07-27/77, 2010-07-27/78, 2010-07-27/79, 2010-07-27/80, 2010-07-27/81, 2010-07-27/82, 2010-07-27/83, 2010-07-27/84, 2010-07-27/85, 2010-07-27/86, 2010-07-27/87, 2010-07-27/88, 2010-07-27/89, 2010-07-27/90, 2010-07-27/91, 2010-07-27/92, 2010-07-27/93, 2010-07-27/94, 2010-07-27/95, 2010-07-27/96, 2010-07-27/97, 2010-07-27/98, 2010-07-27/99, 2010-07-27/100.

NOTE: According to the F.L.R.M. in Map No. 48333303500 and data and in which the 100 year flood zone.

DATE	REVISIONS	NOTES
	BT	

LEGEND
1/4" SECTION BOUNDARY
1/2" SECTION BOUNDARY
3/4" SECTION BOUNDARY
1" SECTION BOUNDARY
1/4" BOUNDARY LINE
1/2" BOUNDARY LINE
3/4" BOUNDARY LINE
1" BOUNDARY LINE
1/4" BOUNDARY LINE WITH SURVEYOR'S NAME
1/2" BOUNDARY LINE WITH SURVEYOR'S NAME
3/4" BOUNDARY LINE WITH SURVEYOR'S NAME
1" BOUNDARY LINE WITH SURVEYOR'S NAME
1/4" BOUNDARY LINE WITH SURVEYOR'S NAME AND DATE
1/2" BOUNDARY LINE WITH SURVEYOR'S NAME AND DATE
3/4" BOUNDARY LINE WITH SURVEYOR'S NAME AND DATE
1" BOUNDARY LINE WITH SURVEYOR'S NAME AND DATE
1/4" BOUNDARY LINE WITH SURVEYOR'S NAME AND DATE AND BEARING AND DISTANCE
1/2" BOUNDARY LINE WITH SURVEYOR'S NAME AND DATE AND BEARING AND DISTANCE
3/4" BOUNDARY LINE WITH SURVEYOR'S NAME AND DATE AND BEARING AND DISTANCE
1" BOUNDARY LINE WITH SURVEYOR'S NAME AND DATE AND BEARING AND DISTANCE
1/4" BOUNDARY LINE WITH SURVEYOR'S NAME AND DATE AND BEARING AND DISTANCE AND AREA
1/2" BOUNDARY LINE WITH SURVEYOR'S NAME AND DATE AND BEARING AND DISTANCE AND AREA
3/4" BOUNDARY LINE WITH SURVEYOR'S NAME AND DATE AND BEARING AND DISTANCE AND AREA
1" BOUNDARY LINE WITH SURVEYOR'S NAME AND DATE AND BEARING AND DISTANCE AND AREA
1/4" BOUNDARY LINE WITH SURVEYOR'S NAME AND DATE AND BEARING AND DISTANCE AND AREA AND BEARING AND DISTANCE
1/2" BOUNDARY LINE WITH SURVEYOR'S NAME AND DATE AND BEARING AND DISTANCE AND AREA AND BEARING AND DISTANCE
3/4" BOUNDARY LINE WITH SURVEYOR'S NAME AND DATE AND BEARING AND DISTANCE AND AREA AND BEARING AND DISTANCE
1" BOUNDARY LINE WITH SURVEYOR'S NAME AND DATE AND BEARING AND DISTANCE AND AREA AND BEARING AND DISTANCE

SCALE 1" = 80'	DATE 10/09/16	JOB NO. 1018500	G.I. NO. 1018118	DRAWN CJH
--------------------------	-------------------------	---------------------------	----------------------------	---------------------

CBG
 12025 Shiloh Road, Ste. 230
 Dallas, TX 75228
 P 214.358.2215
 F 214.358.2215
 www.cbgsurvey.com

ACCEPTED BY _____

Executed this 6th day of October, 2016.
 J.J. Thompson
 Registered Professional Land Surveyor No. 4804



FINAL SURVEY

LOT 40, BLK. 2, GRAND LAKES ESTATES, SEC. 1
 MONTGOMERY COUNTY, TEXAS
 8720 GRAND LAKES ESTATES DRIVE