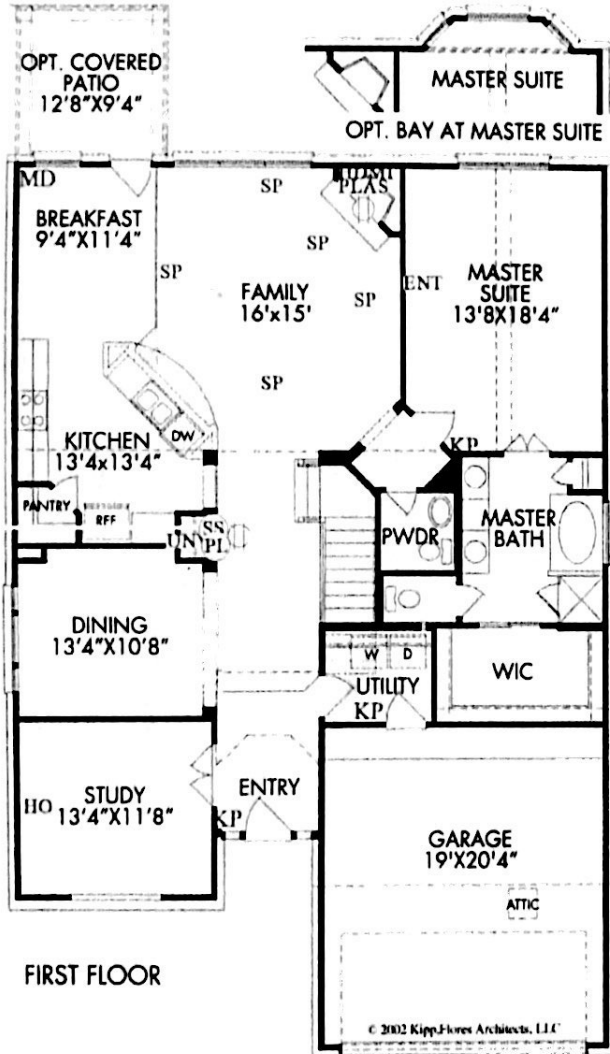
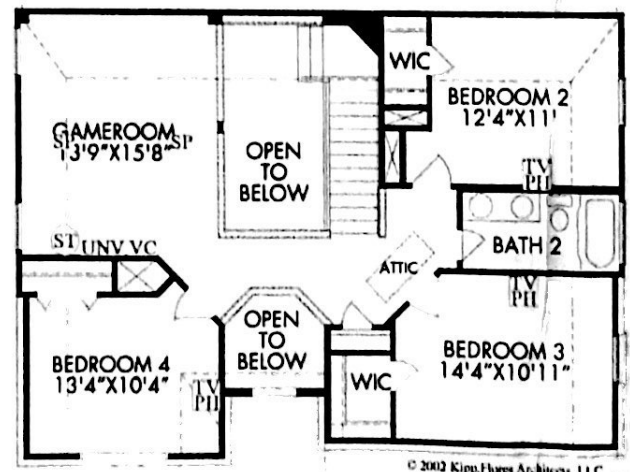


16939 Creek Mountain Drive  
THE DYLAN  
3591



FIRST FLOOR



SECOND FLOOR

MH 06/10

## Images of Langham Creek Sierra Collection Features

### Gourmet Kitchen Features:

- 42" Timberlake™ Flat Panel Oak Kitchen Cabinets with Hidden Hinges and Crown Molding Trim
- Ceramic Tile Backsplash Laid Straight
- Granite Countertops (Group 1)
- DuPure™ Water Filtration System at Kitchen Sink
- 1/3 HP Garbage Disposal
- Ceramic Tile Flooring in Kitchen and Breakfast Area
- Stainless Steel 8" Sink w/ Moen® "Camerist" Chrome Faucet and Vegetable Sprayer
- Recessed can lighting (per plan)
- Choice of White or Black Appliances including:
  - GE™ 30" Electric Oven with Self Clean Feature
  - GE™ 4 Cycle Brilliant Clean Dishwasher
  - GE™ Touch Pad Control OTR Microwave with Turntable, Vented to Outside
  - GE™ Gas Cooktop

### Elegant Bath Features:

- Solid Surface Tresca (Group 1) Vanity Countertops
- Timberlake™ Flat Panel Oak Cabinets in all Baths
- Medicine Cabinet in Master Bath (per plan)
- Moen® "Eva" Chrome Fixtures in all Baths
- Separate Garden Tub and Shower in Master Bath with tile surround and Master tubskirt
- White Pedestal Sink in Powder Bath (per plan)
- Private Obscure Glass Window in Master (per plan)
- Ceramic Tile Flooring in Entire Master Bath, Powder Room, and Secondary Bath Wet Areas, and Utility Room
- Combination Tub/Shower in Secondary Baths w/ Ceramic Tile Surround
- Moen® "Mason" Chrome Bath Accessories
- Elongated Commodes in Master Bath and Powder
- Progress® Lighting in Brushed Nickel finish

### Exterior Features:

- Two-tone Exterior Paint Schemes
- James Hardie™ Fiber Cement Siding, Soffit & Trim
- Front Gutters and Down Spouts w/splash blocks
- Fully Sodded Front & Side Yards to Fence with Landscape Package
- Mahogany Front Door w/ Choice of standard Leaded Glass Inserts w/ Satin Nickel "Dakota" Handleset
- Cast Stone Engraved Address Block
- Progress® Exterior Lighting at Front and Rear Door with Black Coach Lamp at Front (per plan)
- Steel Garage Door Pre-wired for Opener
- 3 Exterior Hose Bibs
- 30 Year Algae Resistant Architectural Roof Shingles
- Fully Fenced Back Yard with 6ft. Privacy Fence
- Hanson™ King-sized Brick on Three Sides of First Floor 10'x10' Patio (per plan)
- Kwikset™ "Satin Nickel" Deadbolt Locks on all Exterior Doors
- Sill Seal barrier at Exterior perimeter

### Interior Features:

- Low VOC Custom PPG Monarch Monterrey drag Texture Wall & Ceiling Finish in Choice of 3 Colors and White Chip Ceilings
- 3 Speed Manual Ceiling Fan w/ Light Kit in Master & Family Rooms; All Other Bedrooms and Game Room Blocked and Wired for Ceiling Fans
- Ceramic Tile Flooring in Entry
- Elegant Raised Panel Doors with Kwikset™ Satin Nickel "Polo" Doorknobs
- 25 oz. Carpet w/ 5 Year Stain Protection with 3/8" Carpet Pad
- Rounded Sheetrock Corners in Accent Areas
- GE™ Full Security System w/ One Key Pad
- Progress® Lighting in Brushed Nickel Finish
- Gas and Electric Dryer Connections

REV. 11/01/11

[www.meritagehomes.com](http://www.meritagehomes.com)

## Villages of Langham Creek Sierra Collection (Continued Features)











### Interior Features (continued):

- GE® Structured Wiring System and Pre-wiring for Cable and Phones (per community)
- Wood Burning Fireplace with Gas Starter, Tile Hearth and Wood Mantle
- Stair Parts w/ Stained Oak Handrails and Newel Posts w/ Painted Spindles up to Second Floor (per plan)

### Meritage Quality Programs:

- Meritage Home Buyers Guide
- Home Builder's Limited Warranty
- Professional Design Services
- Four Quality Assurance Meetings w/ Builder
- Third Party Inspections

### Quality Construction, Testing/Inspections and EnergyStar and Meritage GREEN Features:

-  Vinyl LoE<sup>3</sup> Insulated White Windows w/ Tilt Out Feature
-  Honeywell™ Programmable Thermostat
  - Zurn PEX™ Water Supply "Branch and T"
  - Finger Jointed Studs on 16" Center (both floors)
  - Code Certified Windstorm Bracing
-  Carrier® 14 SEER HVAC System w/ Puron® Refrigerant
-  R-30 Blown Attic Insulation
-  R-13 Insulation in Exterior Walls
-  R-22 Batt Insulation in Sloped Ceilings
-  R-6 Ductwork with Mastic Seal
-  LP Tech Shield™ Radiant Barrier
  - Single 40 gal. Gas Water Heater up to 2.5 Baths, two 40 gal. Gas Water Heaters with 3+ Baths
-  EnergyStar Inspection at Frame & Final Stages
-  Dow™ 1/2" Insulated R-3.6 Sheathing behind all brick and siding
  - Engineered Post Tension designed Foundation
  - Borate Termite Treatment
  - TAEXX® Pest Control System