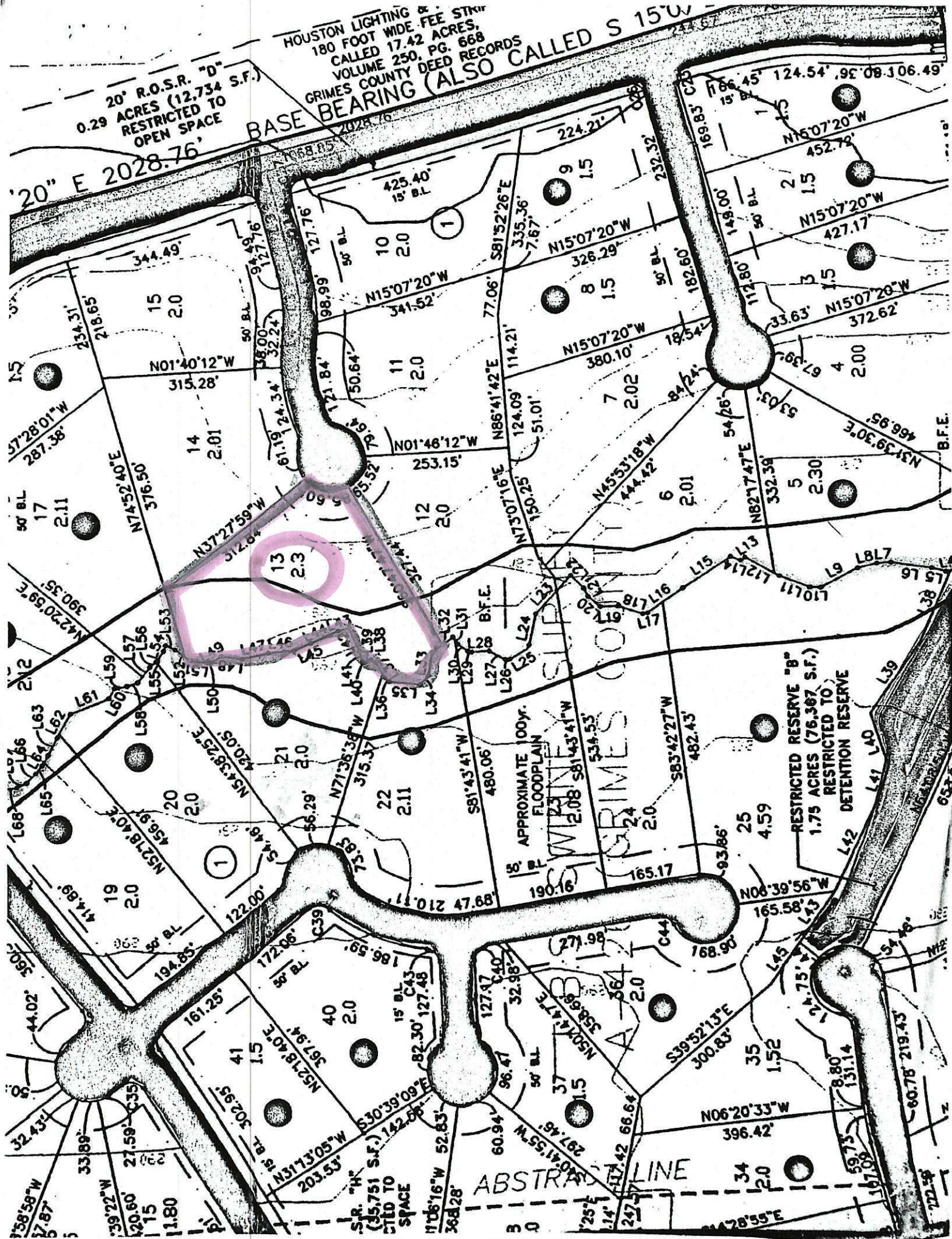


20° R.O.S.R. "D"
0.29 ACRES (12,734 S.F.)
RESTRICTED TO
OPEN SPACE

20" E 2028.76'

HOUSTON LIGHTING & .
180 FOOT WIDE FEE STRIP
CALLED 17.42 ACRES,
VOLUME 250, PG. 668
GRIMES COUNTY DEED RECORDS

BASE BEARING (ALSO CALLED S 15' W



GRIMES COOLERS

RESTRICTED RESERVE "B"
1.75 ACRES (76,367 S.F.)
RESTRICTED TO
DETENTION RESERVE

APPROXIMATE 100Y.
FLOODPLAIN

ABSTRACT LINE

S.R. "H"
(35,751 S.F.)
RESTRICTED TO
OPEN SPACE