

DATE	
NO.	
REV.	
BY	
CHECKED	
DATE	

ALL RIGHTS RESERVED. THIS DRAWING IS THE PROPERTY OF ROCKWELL HOMES, INC. AND IS NOT TO BE REPRODUCED OR TRANSMITTED IN ANY FORM OR BY ANY MEANS, ELECTRONIC OR MECHANICAL, INCLUDING PHOTOCOPYING, RECORDING, OR BY ANY INFORMATION STORAGE AND RETRIEVAL SYSTEM. WITHOUT THE WRITTEN PERMISSION OF ROCKWELL HOMES, INC.

ROCKWELL HOMES

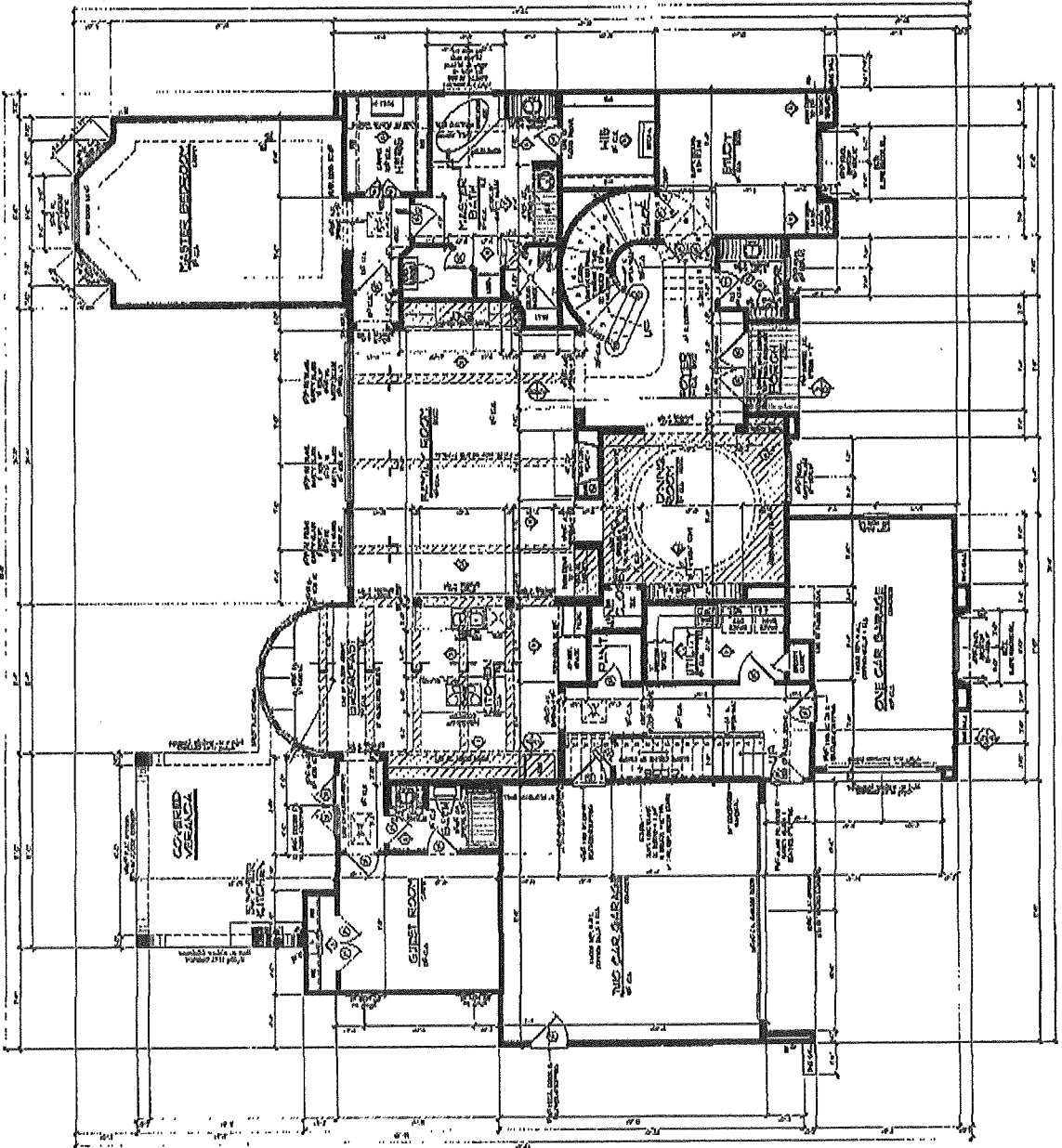
A CUSTOM, REGIONAL PLAN

COPYRIGHT 2006

GARY KEITH JACKSON
 CUSTOM RESIDENTIAL DESIGN
 11111 HWY 63A, SUITE 110
 ROCK CREEK, TEXAS 75087
 (972) 483-1111

PROJECT NUMBER	
REVISION	
DATE	
BY	
CHECKED	
DATE	

1 FIRST FLOOR PLAN
 1/3 834 Nathan Ridge



DATE	BY

ROCKWELL HOMES

A CUSTOM DESIGN FIRM

COPYRIGHT 2008

GARY KEITH JACKSON

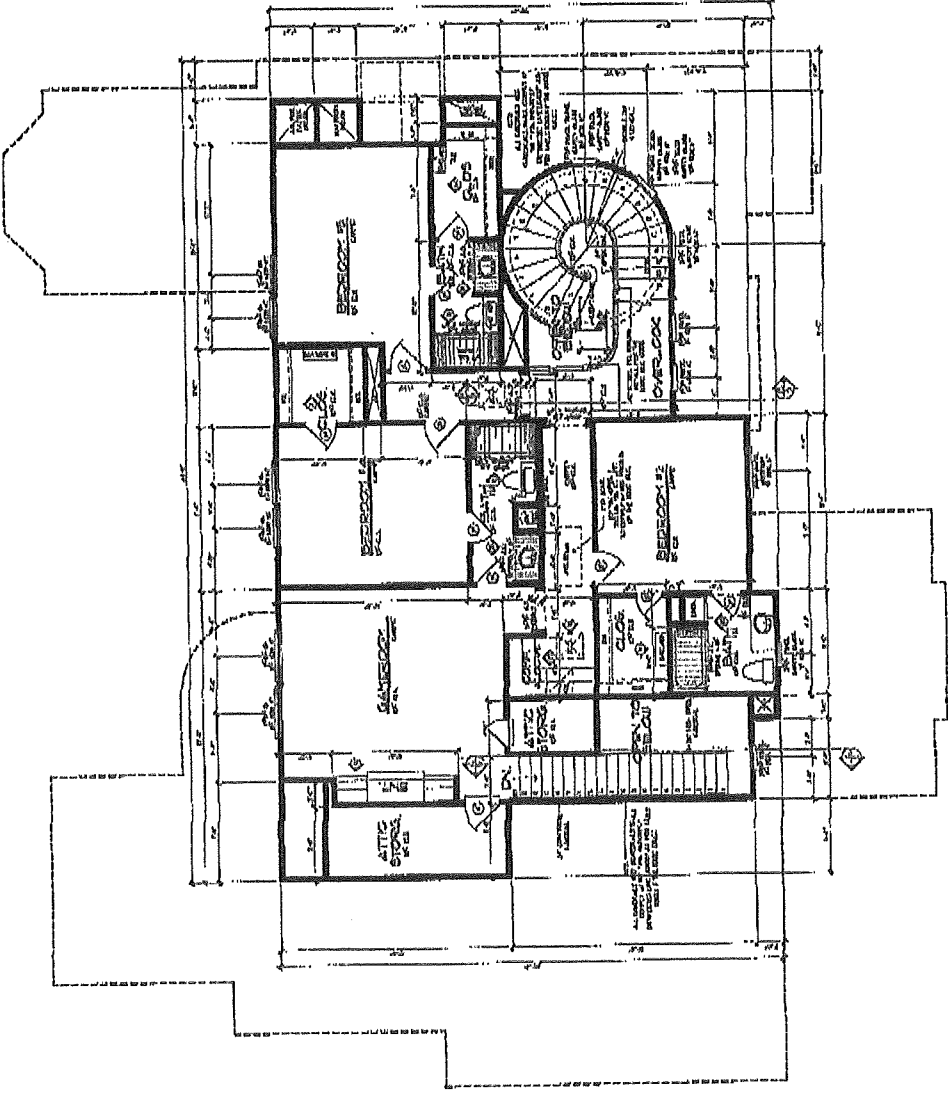
CUSTOM RESIDENTIAL DESIGN

1801 1/2 W. 4TH ST. SUITE 108 / BOULDER, CO 80502

PROJECT NO.	
DATE	
BY	
CHECKED BY	
SCALE	

GENERAL NOTES:

1. ALL DIMENSIONS ARE TO FACE UNLESS OTHERWISE NOTED.
2. ALL FINISHES ARE TO BE AS SHOWN ON THE FINISH SCHEDULE.
3. ALL WORK IS TO BE IN ACCORDANCE WITH THE 2006 INTERNATIONAL RESIDENTIAL CODE BOOK (IRC).
4. ALL ELECTRICAL WORK IS TO BE INSTALLED IN ACCORDANCE WITH THE 2006 NATIONAL ELECTRICAL CODE (NEC).
5. ALL MECHANICAL WORK IS TO BE INSTALLED IN ACCORDANCE WITH THE 2006 INTERNATIONAL MECHANICAL CODE BOOK (IMC).
6. ALL PLUMBING WORK IS TO BE INSTALLED IN ACCORDANCE WITH THE 2006 INTERNATIONAL PLUMBING CODE (IPC).
7. ALL CONCRETE WORK IS TO BE INSTALLED IN ACCORDANCE WITH THE 2006 INTERNATIONAL CONCRETE CODE BOOK (ICC).
8. ALL ROOFING WORK IS TO BE INSTALLED IN ACCORDANCE WITH THE 2006 INTERNATIONAL ROOFING CODE BOOK (IRC).
9. ALL EXTERIOR FINISHES ARE TO BE AS SHOWN ON THE EXTERIOR FINISH SCHEDULE.
10. ALL INTERIOR FINISHES ARE TO BE AS SHOWN ON THE INTERIOR FINISH SCHEDULE.
11. ALL WORK IS TO BE INSTALLED IN ACCORDANCE WITH THE 2006 INTERNATIONAL BUILDING CODE (IBC).
12. ALL WORK IS TO BE INSTALLED IN ACCORDANCE WITH THE 2006 INTERNATIONAL FIRE AND SAFETY CODE (IFSC).
13. ALL WORK IS TO BE INSTALLED IN ACCORDANCE WITH THE 2006 INTERNATIONAL ENERGY EFFICIENCY CODE (IEEC).
14. ALL WORK IS TO BE INSTALLED IN ACCORDANCE WITH THE 2006 INTERNATIONAL SMOKE AND ALARM CODE (ISAC).
15. ALL WORK IS TO BE INSTALLED IN ACCORDANCE WITH THE 2006 INTERNATIONAL ACCESSIBILITY AND MOBILITY ACT (AIMA).
16. ALL WORK IS TO BE INSTALLED IN ACCORDANCE WITH THE 2006 INTERNATIONAL ENVIRONMENTAL CODE (IEC).
17. ALL WORK IS TO BE INSTALLED IN ACCORDANCE WITH THE 2006 INTERNATIONAL HEALTH AND SAFETY CODE (IHSC).
18. ALL WORK IS TO BE INSTALLED IN ACCORDANCE WITH THE 2006 INTERNATIONAL OCCUPATIONAL SAFETY AND HEALTH CODE (IOSH).
19. ALL WORK IS TO BE INSTALLED IN ACCORDANCE WITH THE 2006 INTERNATIONAL LABOR STANDARDS CODE (ILSC).
20. ALL WORK IS TO BE INSTALLED IN ACCORDANCE WITH THE 2006 INTERNATIONAL TRADE AGREEMENTS CODE (ITAC).
21. ALL WORK IS TO BE INSTALLED IN ACCORDANCE WITH THE 2006 INTERNATIONAL ECONOMIC COOPERATION AND DEVELOPMENT CODE (IECD).
22. ALL WORK IS TO BE INSTALLED IN ACCORDANCE WITH THE 2006 INTERNATIONAL ORGANIZATION FOR ECONOMIC COOPERATION AND DEVELOPMENT CODE (OECD).
23. ALL WORK IS TO BE INSTALLED IN ACCORDANCE WITH THE 2006 INTERNATIONAL MONETARY FUND CODE (IMF).
24. ALL WORK IS TO BE INSTALLED IN ACCORDANCE WITH THE 2006 INTERNATIONAL BANKING CODE (IBC).
25. ALL WORK IS TO BE INSTALLED IN ACCORDANCE WITH THE 2006 INTERNATIONAL FINANCIAL SERVICES CODE (IFSC).
26. ALL WORK IS TO BE INSTALLED IN ACCORDANCE WITH THE 2006 INTERNATIONAL TELECOMMUNICATIONS CODE (ITC).
27. ALL WORK IS TO BE INSTALLED IN ACCORDANCE WITH THE 2006 INTERNATIONAL ENERGY EFFICIENCY CODE (IEEC).
28. ALL WORK IS TO BE INSTALLED IN ACCORDANCE WITH THE 2006 INTERNATIONAL SMOKE AND ALARM CODE (ISAC).
29. ALL WORK IS TO BE INSTALLED IN ACCORDANCE WITH THE 2006 INTERNATIONAL ACCESSIBILITY AND MOBILITY ACT (AIMA).
30. ALL WORK IS TO BE INSTALLED IN ACCORDANCE WITH THE 2006 INTERNATIONAL ENVIRONMENTAL CODE (IEC).
31. ALL WORK IS TO BE INSTALLED IN ACCORDANCE WITH THE 2006 INTERNATIONAL HEALTH AND SAFETY CODE (IHSC).
32. ALL WORK IS TO BE INSTALLED IN ACCORDANCE WITH THE 2006 INTERNATIONAL OCCUPATIONAL SAFETY AND HEALTH CODE (IOSH).
33. ALL WORK IS TO BE INSTALLED IN ACCORDANCE WITH THE 2006 INTERNATIONAL LABOR STANDARDS CODE (ILSC).
34. ALL WORK IS TO BE INSTALLED IN ACCORDANCE WITH THE 2006 INTERNATIONAL TRADE AGREEMENTS CODE (ITAC).
35. ALL WORK IS TO BE INSTALLED IN ACCORDANCE WITH THE 2006 INTERNATIONAL ECONOMIC COOPERATION AND DEVELOPMENT CODE (IECD).
36. ALL WORK IS TO BE INSTALLED IN ACCORDANCE WITH THE 2006 INTERNATIONAL ORGANIZATION FOR ECONOMIC COOPERATION AND DEVELOPMENT CODE (OECD).
37. ALL WORK IS TO BE INSTALLED IN ACCORDANCE WITH THE 2006 INTERNATIONAL MONETARY FUND CODE (IMF).
38. ALL WORK IS TO BE INSTALLED IN ACCORDANCE WITH THE 2006 INTERNATIONAL BANKING CODE (IBC).
39. ALL WORK IS TO BE INSTALLED IN ACCORDANCE WITH THE 2006 INTERNATIONAL FINANCIAL SERVICES CODE (IFSC).
40. ALL WORK IS TO BE INSTALLED IN ACCORDANCE WITH THE 2006 INTERNATIONAL TELECOMMUNICATIONS CODE (ITC).



1 SECOND FLOOR PLAN

DATE: 07/20/2007
BY: GARY KEITH JACKSON