

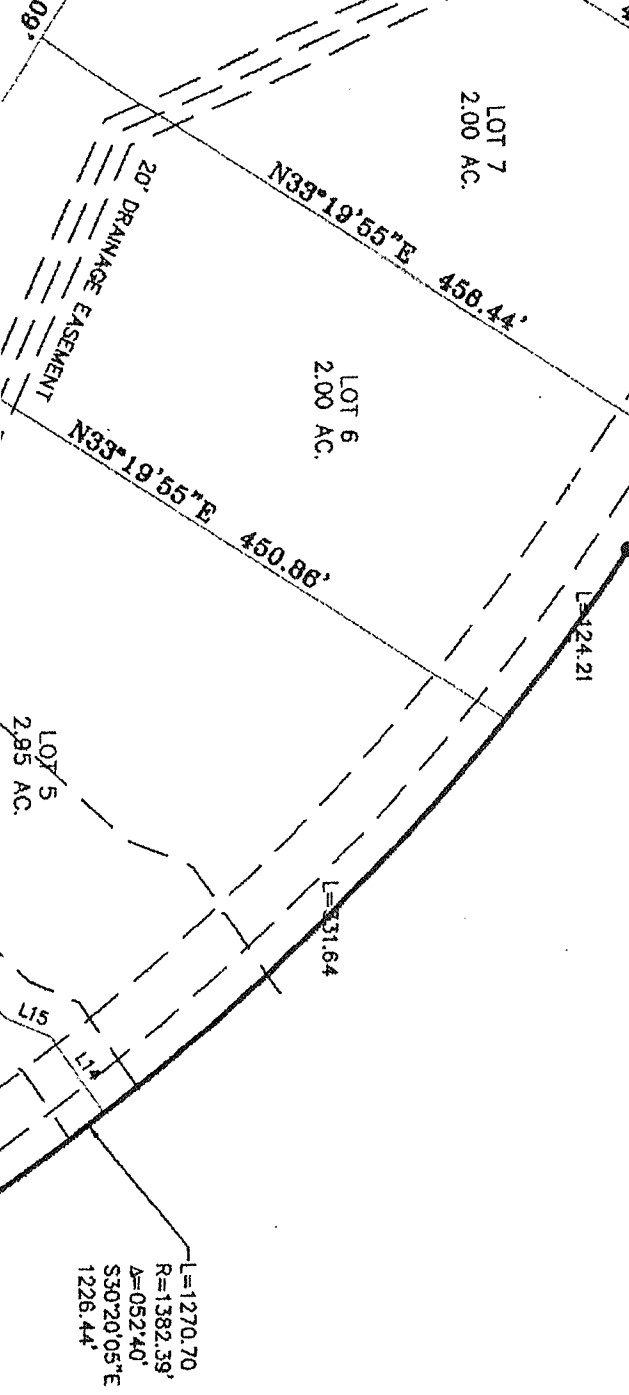
CURVE #	LENGTH	RADIUS	DELTA	CHD. BEARING	CHORD
C1	137.76'	2639.97'	71°50'	S89°12'12"E	337.33'
C4	296.83'	200.00'	85°02'12"	N51°44'57"E	270.33'
C7	242.78'	370.00'	37°35'48"	N16°48'29"E	238.45'
C8	78.47'	130.00'	33°42'12"	N18°45'18"E	75.37'

LINE #	BEARING	LENGTH
L1	S70°19'10"E	19.10'
L2	S88°02'32"E	33.46'
L3	S87°31'58"E	245.05'
L4	N81°31'E	136.54'
L5	N15°24'W	161.43'
L6	N35°36'22"E	258.40'
L7	N15°41'0"E	111.13'
L8	S81°06'52"E	64.87'
L9	S88°11'16"E	77.38'
L10	S50°58'13"E	80.43'
L11	S41°25'58"E	170.47'
L12	S8°00'39"E	52.23'
L13	S38°48'32"E	50.78'
L14	N55°52'43"E	56.17'
L15	N23°42'30"E	28.81'
L16	N43°34'32"E	109.24'
L17	N3°09'06"E	70.24'
L18	N39°55'41"E	82.23'
L19	S78°57'43"E	53.77'
L20	N57°02'15"E	34.27'

LINE #	BEARING	LENGTH
L21	N12°11'47"W	42.80'
L22	N16°42'12"E	27.28'
L23	N30°04'31"W	28.69'
L24	S83°28'28"W	33.80'
L25	N41°59'41"W	26.37'
L26	N91°16'30"E	32.43'
L27	S78°01'37"W	44.08'
L28	N45°11'17"W	29.74'
L29	S70°38'36"W	65.43'
L30	N81°58'52"W	70.31'
L31	S71°14'3"W	68.16'
L32	S81°16'00"W	92.87'
L33	S17°35'46"W	81.67'
L34	S77°28'28"W	38.83'
L35	S7°46'02"E	46.75'
L36	S45°00'28"E	43.18'
L37	S9°41'29"W	43.79'
L38	S50°39'21"E	68.08'
L39	S88°46'53"E	49.50'
L40	N25°38'49"E	29.20'

LINE #	BEARING	LENGTH
L41	N6°00'38"W	40.23'
L42	N56°02'35"E	36.84'
L43	S83°59'41"E	28.61'
L44	N42°50'49"E	108.38'
L45	N7°00'11"W	79.99'
L46	N18°57'04"E	48.87'
L47	N55°43'13"W	35.24'
L48	S44°00'09"W	26.67'
L49	S4°34'30"W	33.18'
L50	S55°57'40"W	58.10'
L51	N58°08'36"W	60.56'
L52	N49°02'09"E	66.60'
L53	N0°00'00"E	32.42'
L54	S83°12'46"W	27.89'
L55	N21°02'34"W	64.51'
L56	N45°00'28"E	50.53'
L57	S57°15'06"E	47.11'
L58	S11°53'30"E	38.75'
L59	N88°28'45"E	25.28'
L60	N45°48'52"E	33.39'

LINE #	BEARING	LENGTH
L61	N14°33'12"E	88.99'
L62	N63°02'26"E	42.53'
L63	N47°29'50"W	32.48'
L64	S64°08'23"W	73.17'
L65	N21°48'24"W	50.13'
L66	N35°35'41"E	66.75'



THE STATE OF TEXAS §
 CITY OF ONALASKA §
 §

THE STATE OF TEXAS §
 CITY OF ONALASKA §
 §

I, ANGELA STUTTS, CITY ADMINISTRATOR OF THE CITY OF ONALASKA, TEXAS DO HEREBY, ON A SUBDIVIDED TRACT HAVING BEEN FULLY PRESENTED TO THE COUNCIL DAILY CONSIDERED, WERE ON THE DAY APPROVED AND PLAT AMT RECORDS OF THE CITY OF ONALASKA AND THE COUNTY CLERK OF POLK COUNTY

I, B. MALTON "CHIP" CHOATE, MAYOR OF THE CITY OF ONALASKA, TEXAS DO HEREBY, ON A SUBDIVIDED TRACT HAVING BEEN FULLY PRESENTED TO THE COUNCIL DAILY CONSIDERED, WERE ON THE DAY APPROVED AND PLAT AMT RECORDS OF THE CITY OF ONALASKA AND THE COUNTY CLERK OF POLK COUNTY

B. Malton "Chip" Choate
 Mayor
 City of Onalaska

THE STATE OF TEXAS §
 CITY OF ONALASKA §
 §