



MOY STREET PARK



To learn more about this community, please contact:

MICHAEL AFSHARI | 832.875.3252

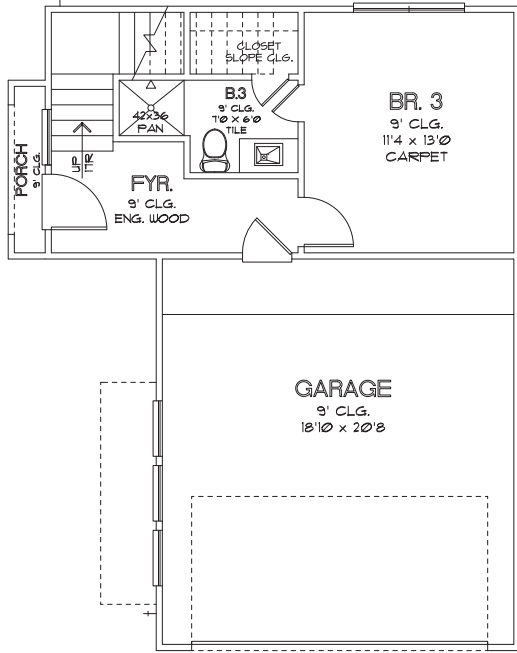
MichaelA@HappenHouston.com

CHOICE IS THE ULTIMATE LUXURY

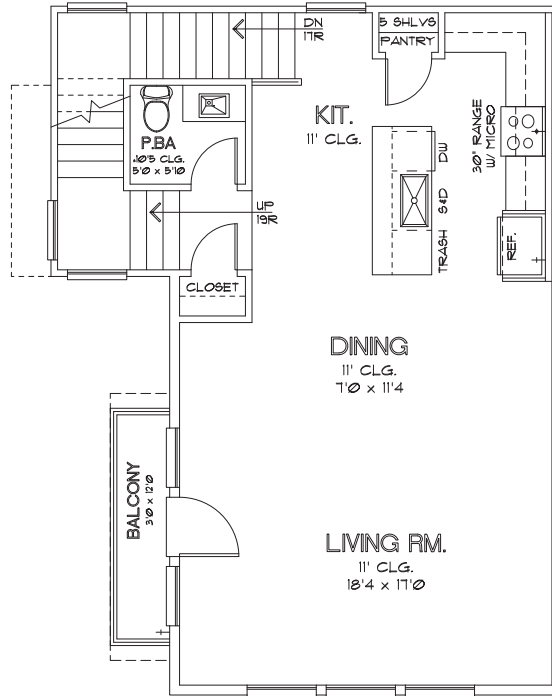


CITY HOMES CHOICE

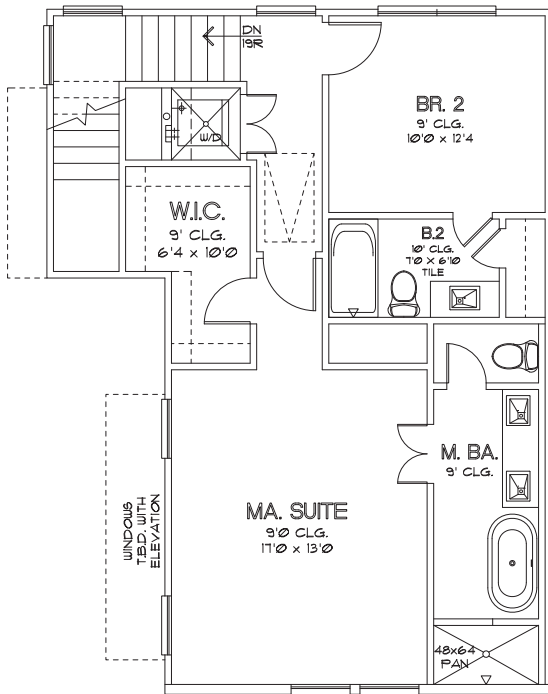
MOY STREET PARK THE MOY - 1,812 SQ. FT.



FIRST FLOOR



SECOND FLOOR



THIRD FLOOR

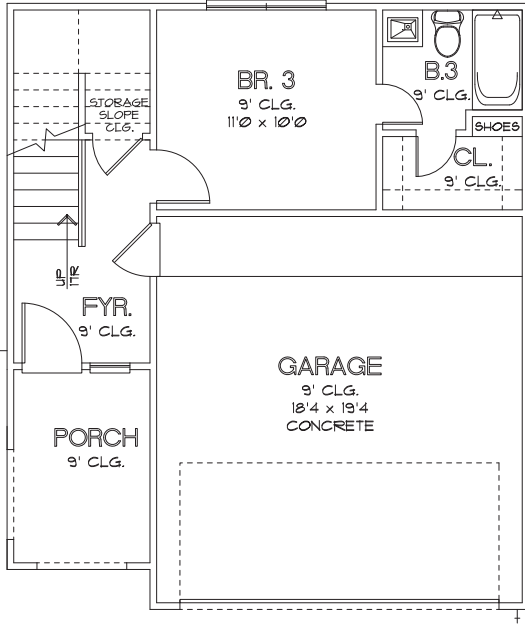


CHOICE IS THE ULTIMATE LUXURY

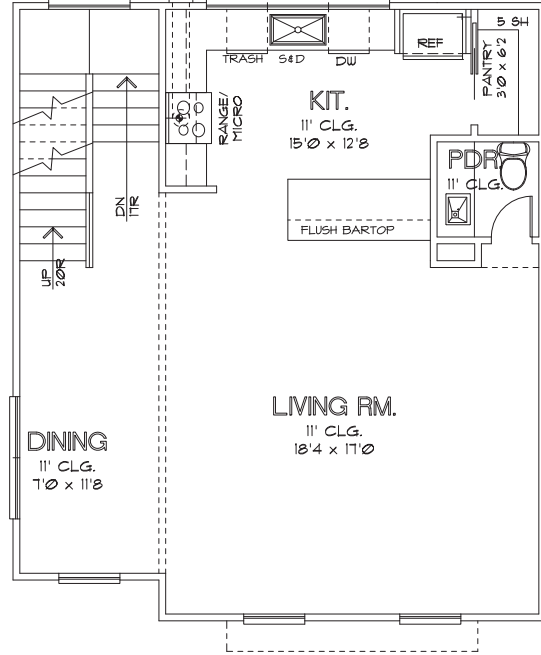


CITY HOMES CHOICE

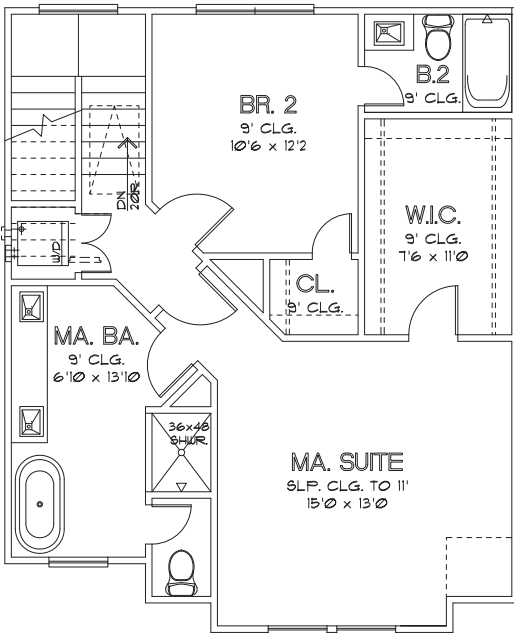
MOY STREET PARK 1,841 SQ. FT.



FIRST FLOOR



SECOND FLOOR



THIRD FLOOR

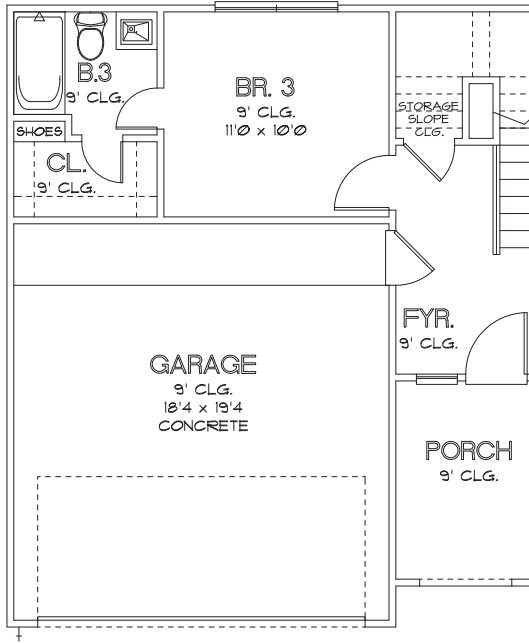


CHOICE IS THE ULTIMATE LUXURY

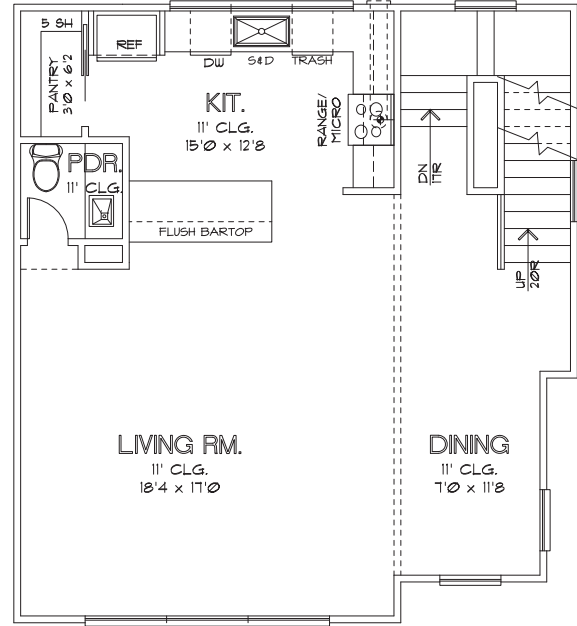


CITY HOMES CHOICE

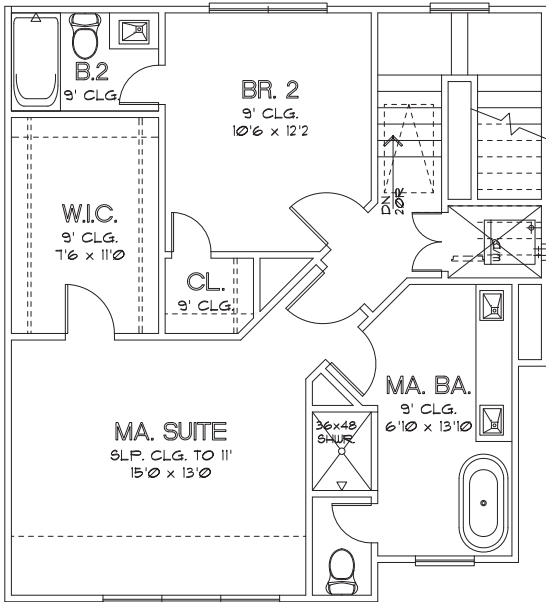
MOY STREET PARK 1,900 SQ. FT.



FIRST FLOOR



SECOND FLOOR



THIRD FLOOR



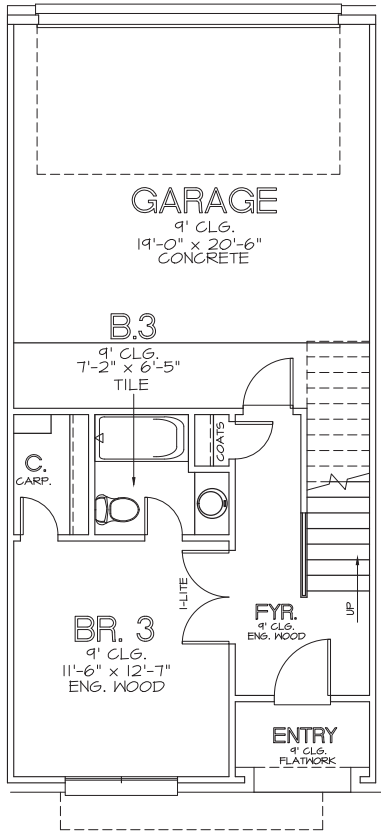
CHOICE IS THE ULTIMATE LUXURY



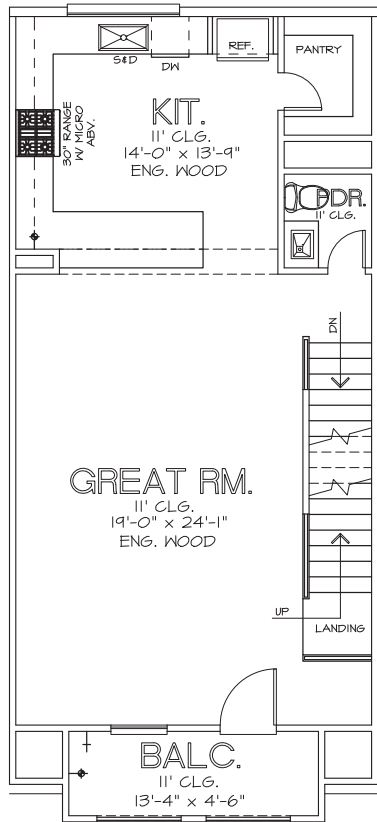


CITY HOMES CHOICE

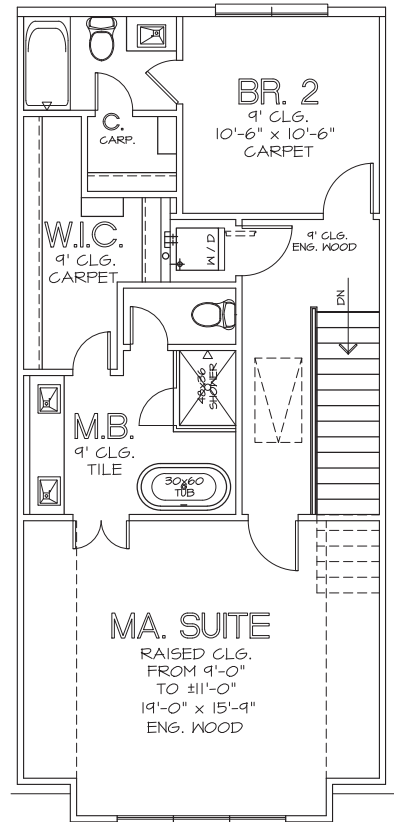
MOY STREET PARK THE ALLEN - 1,922 SQ. FT.



FIRST FLOOR



SECOND FLOOR



THIRD FLOOR



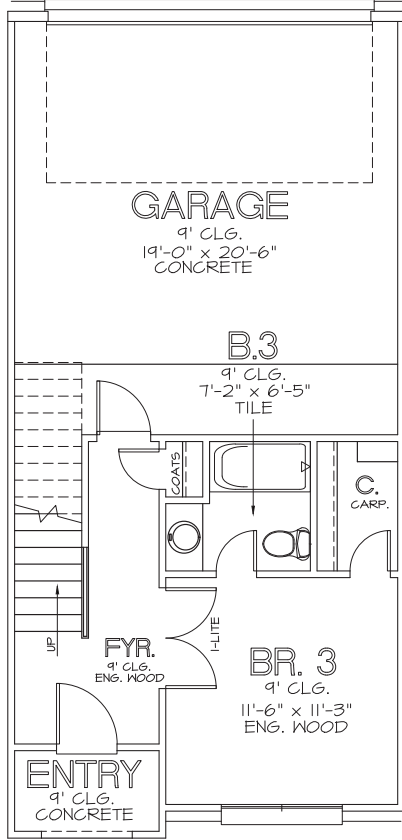
CHOICE IS THE ULTIMATE LUXURY



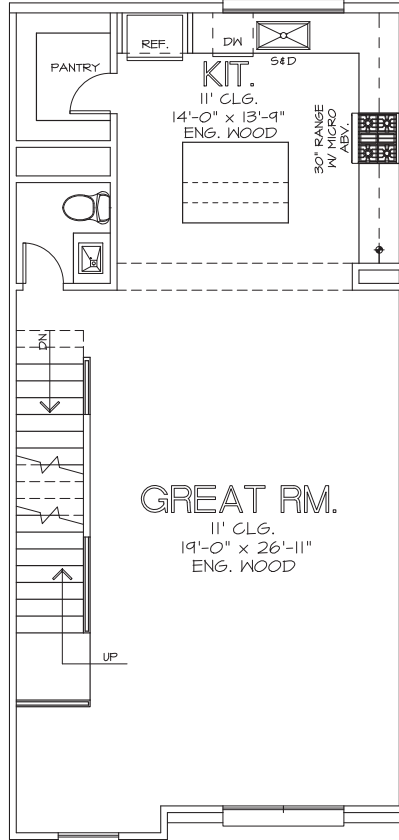


CITY HOMES CHOICE

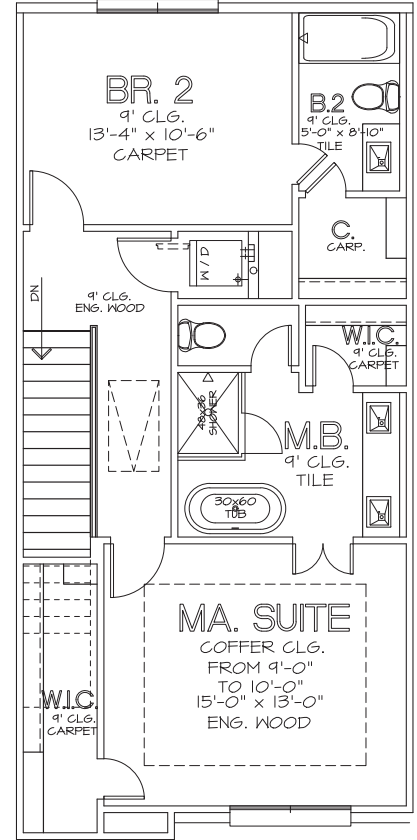
MOY STREET PARK THE REVERE - 1,903 SQ. FT.



FIRST FLOOR



SECOND FLOOR



THIRD FLOOR



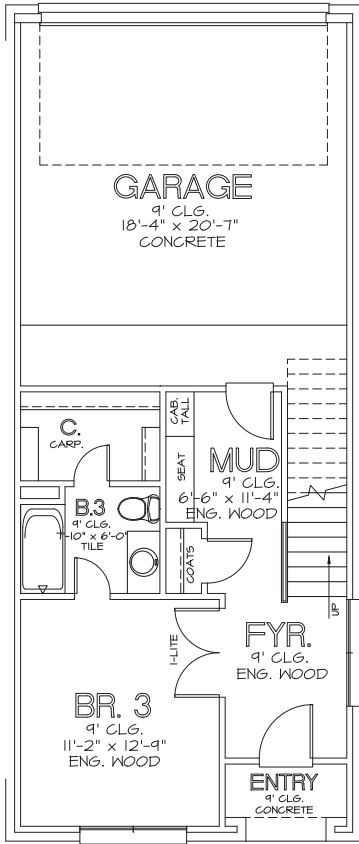
CHOICE IS THE ULTIMATE LUXURY



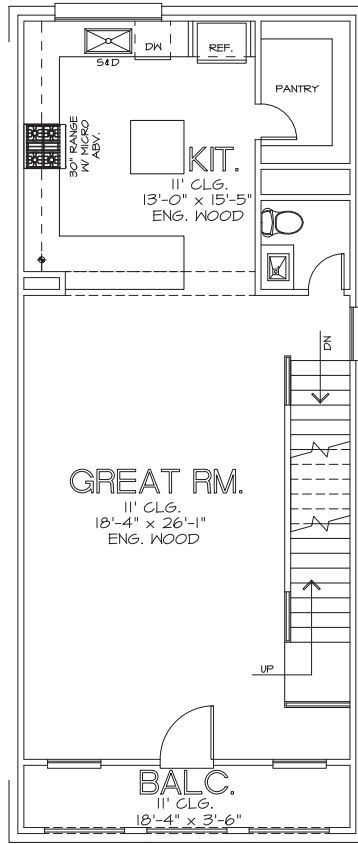


CITY HOMES CHOICE

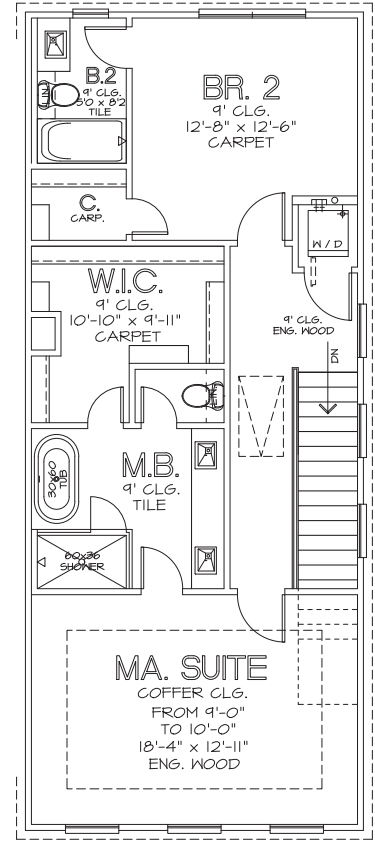
MOY STREET PARK THE OLYMPIA - 2,076 SQ. FT.



FIRST FLOOR



SECOND FLOOR



THIRD FLOOR

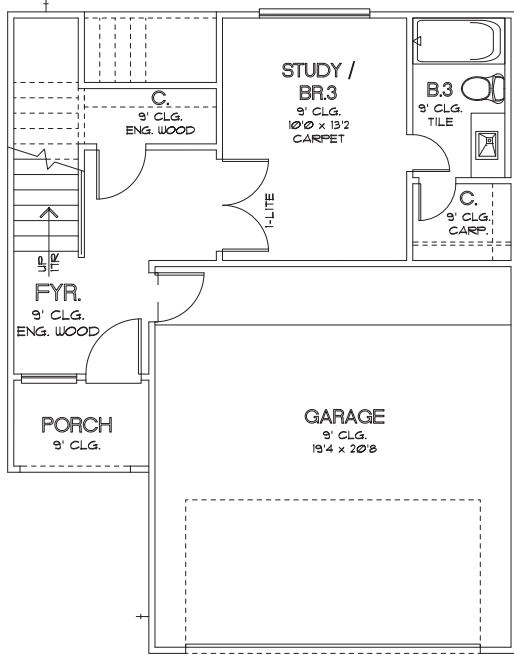


CHOICE IS THE ULTIMATE LUXURY

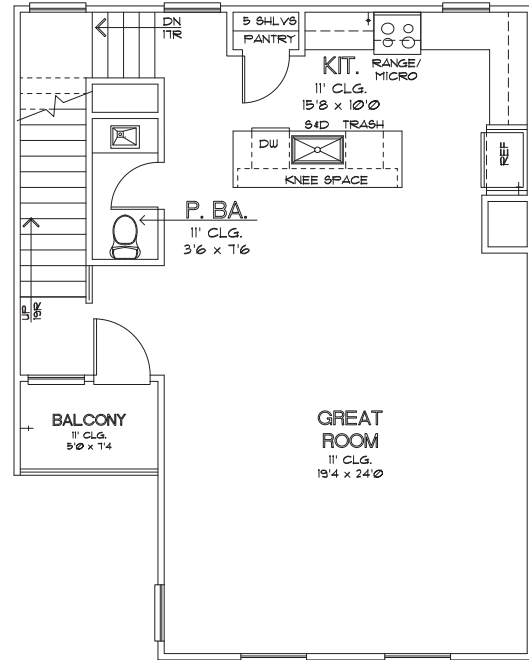


CITY HOMES CHOICE

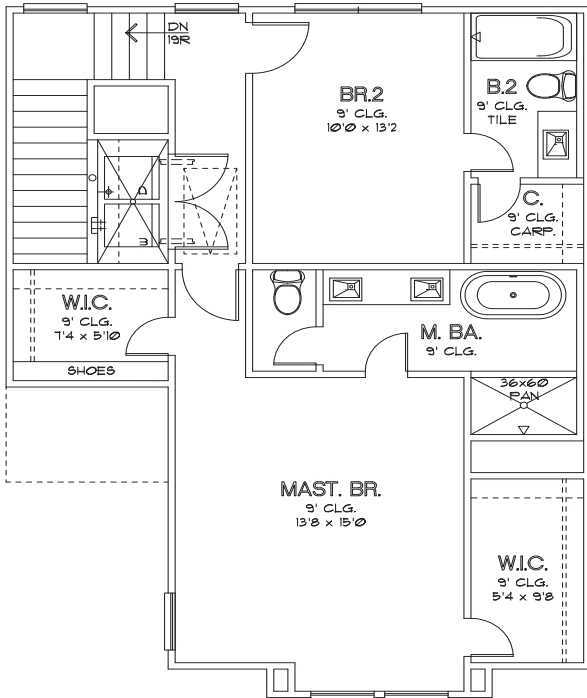
MOY STREET PARK THE AVALON - 2,038 SQ. FT.



FIRST FLOOR



SECOND FLOOR



THIRD FLOOR



CHOICE IS THE ULTIMATE LUXURY



MOY STREET PARK

HOME FEATURES & SPECIFICATIONS

FIRST FLOOR (ENTRY WAY, FIRST BEDROOM, FIRST BATHROOM)

- Engineered Swiss Flooring in Entry Hall
- Coat Closet
- First Bedroom with Engineered Swiss Flooring
- Designer Porcelain Floors in Bathroom and Shower
- Quartz Countertops
- Undermounted Sink
- Modern Chrome Plumbing Fixtures
- Laminate Wood Steps up to Second Floor

SECOND FLOOR (KITCHEN, DINING, LIVING ROOM)

- Engineered Swiss Flooring throughout Second Floor
- Laminate Wood Treads
- Quartz Countertops
- Subway Tile Backsplash
- Shaker Cabinetry
- Powder Room with Pedestal Sink

THIRD FLOOR

- Engineered Swiss Flooring in Hallways
- Laminate Wood Treads on Stairs/Risers

Master Bathroom

- Engineered Swiss Flooring
- Designer Porcelain Floors in Bathroom and Shower
- Free-Standing Soaking Tub
- Frameless Glass Shower
- Modern Chrome Plumbing Fixtures
- Undermounted Sink
- Quartz Countertops
- Framed Mirrors
- Shaker Cabinetry

Secondary Bathroom

- Designer Porcelain Flooring and Paneling in Shower
- Quartz Countertops
- Undermounted Sink
- Modern Chrome Plumbing Fixtures
- Shaker Cabinetry

MECHANICAL SPECIFICATIONS

Foundation

- Engineered Post Tension Foundation
- 3,000 PSI Concrete
- Engineered Building Pads

Frame and Cornice

- Engineered Structural Framing
- 2"x4" Stud Grade Fire Walls, Every 16" (+or-) O.C.
- Yellow Pine Ceiling Joints 16" (+or-) O.C.
- Yellow Pine Rafters, 16" (+or-) O.C.
- 7/16" OSB Roof Decking with TechShield Radiant Barrier
- 7/16" OSB Sheathing
- Engineered Wood Trusses Per Floor

- 3/4" Tongue and Groove Subfloor
- Cem Plank Siding
- All Subfloor is Glued, Nailed and Screwed
- Anthony Power Beams
- Windstorm Per Plans and Codes

Windows

- Vinyl/Aluminum Frame, Insulated (Double Pane), Clear Glass with Low-E

Ceiling Heights

- Varies from 9'-12' - See Floor Plan

Exterior

- HardiPlank siding or Hardi Stucco Board
- Sherwin Williams Conflex Elastomeric Coating
- 30-Year Roof Shingle

Air Conditioning and Heating

- 16 SEER System
- Trane Condensing Unit
- Trane Furnace
- R-8/6 Silver Flex Duct in Attic
- Programmable Thermostats

Electrical

- All Copper Wiring throughout the House
- GFI Safety Switches where Required by Codes
- 125 AMP Main Electric Panel
- All Other Electrical Wiring as Per Floor Plans
- Recessed Can Lighting

Plumbing

- CPVC Vents and Drain Pipes
- Black Steel Pipes for Gas
- Insulated Exposed Water Lines
- 40-Gallon Water Heater

Insulation

Area:	Material:	R-Value:	Thickness:
Exterior Walls	Batt	R-19	5"
Cold Floors	Batt	R-19	6.25"
Ceilings	Batt	R-19	5"
Attic	Blown	R-38	12"

Appliances

- Dishwasher: Samsung DW80M2020US
- Cooktop: Samsung NX58K3310SS
- Microwave: Samsung ME16K3000AS

CHOICE IS THE ULTIMATE LUXURY



