

• No Closing Delays: We are on time every time.

Lantana

Community Information

Schools

Cypress-Fairbanks ISD
www.cfisd.net
Hemmenway Elementary School
20400 W. Little York Rd, Katy, TX 77449
Thornton Middle School
19802 Kieth Harrow Blvd, Katy, TX 77449
Cypress-Park High School
7425 Westgreen Blvd, Cypress, TX 77433

Home Owner Association

HOA Fees *See NHC
HOA Contact *See NHC

Taxes

Total Estimated Rate 3.03568*
*Before exemptions. All tax rates should be independently verified.

Utilities

| | |
|------------------------------|--------------|
| Electric, CenterPoint Energy | 800-427-7142 |
| Gas, CenterPoint Energy | 800-427-7142 |
| Harris Co. MUD 105 | 281-367-5511 |
| Cable/Telephone, Comcast | 866-461-4468 |
| Cable/Telephone, AT&T | 800-288-2020 |
| Trash, Best Trash | 281-313-2378 |
| US Post Office | 281-829-5062 |
| Police Department | 281-391-4848 |
| Fire Department | 281-391-2500 |

Recreation

Bear Creek Pioneers Park
Cullen Park
VillaSport Athletic Club and Spa Cypress

Shopping

Vintage Park
Memorial City Mall
Town and Country Village
Target
Whole Foods
H-E-B

Dining/Entertainment

Vintage Park
Town and Country Village

Model Address

21503 Autumn Summit Street
Katy, TX 77449
281-205-2400

*All information is deemed reliable, but not guaranteed. M/I Homes of Houston, LLC does not endorse, nor is an affiliate of any vendor, business, school, park or club.



M/I builds quality homes in Columbus/Cincinnati, OH; Detroit, MI; Indianapolis, IN; Chicago, IL; Charlotte/Raleigh, NC; Tampa/Orlando, FL; Houston/San Antonio/Austin, TX; and Washington, D.C. All community and area information is deemed reliable, but is not guaranteed. See New Home Consultant for details. 4/19



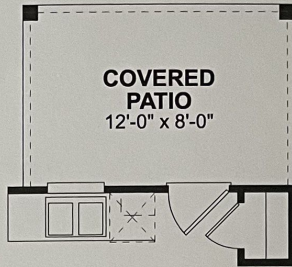
Gold Cool (#99200)

- Appliances
 - Free Standing Range: GE® Stainless Steel 30" 4-Burner Gas Range (JGBS60REKSS)
 - Microhood: GE® Stainless Steel 1.6cu Microwave w/ Vent (JVM3162RJSS)
 - Dishwasher: GE® Stainless Steel w/ Top Controls (GDT605PSMSS)
- Kitchen Backsplash: CS23 12x12 Laid on Diagonal w/ #103 Cobblestone Grout
- Cabinets Whole House: Woodmont® Dakota / Maple / White w/ 42" Uppers @ Kitchen
- Countertop @ Kitchen: 3cm Blanco Galia w/ Straight Edge
- Flooring
 - Carpet: Shaw® BX001 (500 Stone)
 - Luxury Vinyl: Choose 1 of the following.
 - Mohawk® Arrington Ultimate Flex LVT (Silver Strand AU892)
 - Mohawk® Arrington Ultimate Flex LVT (Forest Brown AP848)
- Gutters: Front
- Door @ Owner's Bath
- Kitchen Sink: 10" UM Kitchen Sink (50/50 Split)
- Kitchen Faucet: Moen® Chateau w/ Separate Sprayer 7437 (Chrome)
- Elongated Commode @ Owner's Bath
- Shower/Tub Surrounds: CS23 12x12 Laid Straight w/ #103 Cobblestone Grout
- Shower Enclosure: Spartan Plus (Chrome)
- Window Coverings: 2" Faux Wood White Blinds (Whole House)
- Window Sills
- CLARE® Connected Home Package #1

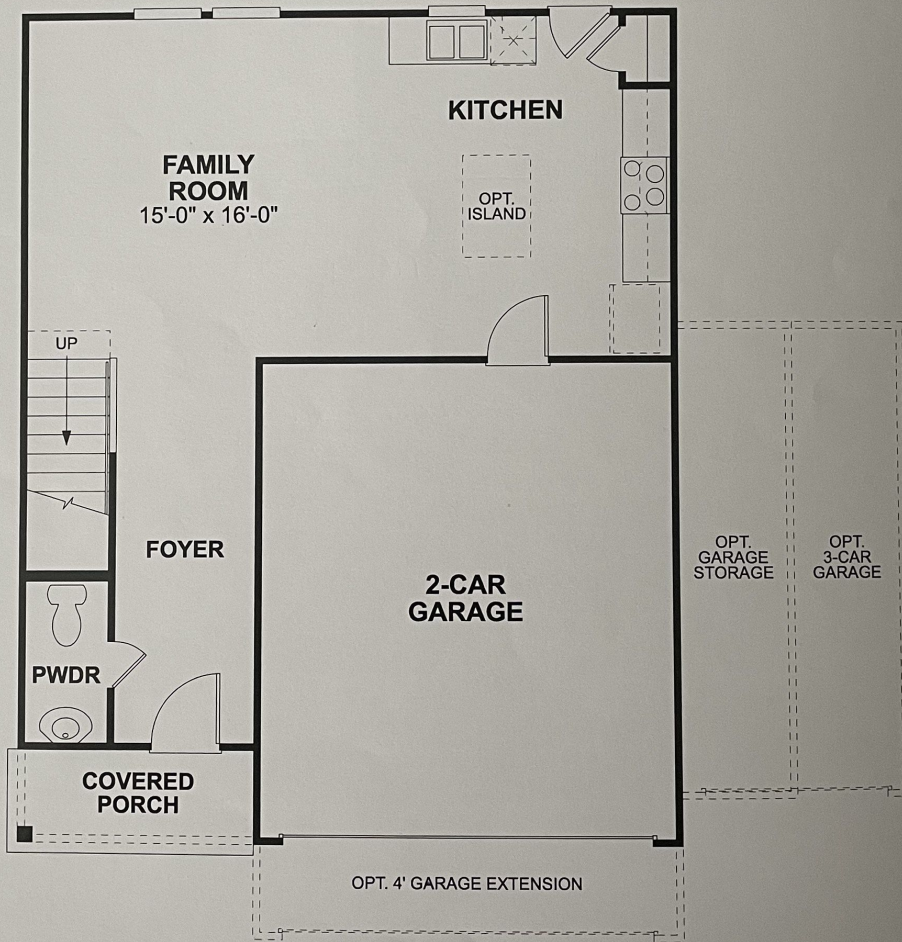
199 925

First Floor

Sec

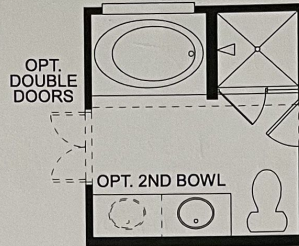


OPTIONAL COVERED PATIO

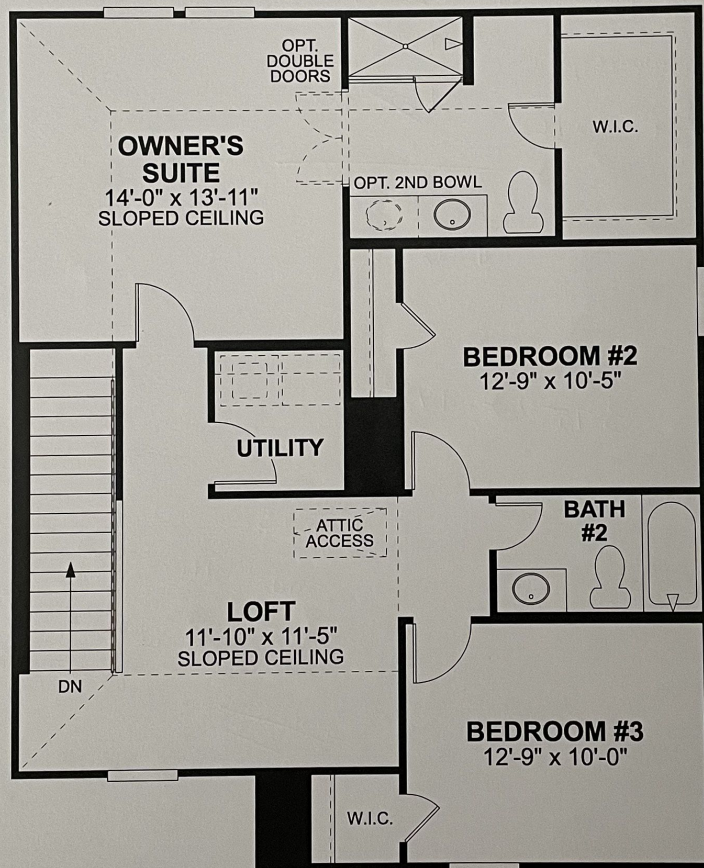


Because we are constantly improving our product, we reserve the right to revise, change, and/or substitute product features, dimensions, specifications, architectural details and designs without notice. This brochure is for illustration purposes only and is not part of a legal contract. Prices are subject to change without notice. Room dimensions are approximate and calculated from inside of partition. Printed 4-19

Second Floor



OPTIONAL LUXURY MASTER BATH



M/I HOMES

Welcome to Better