

5410 Navarro in St. George Place

\$1,295,000



Warm, Sophisticated Elegance with Impeccable Detailing

Italian villa-inspired exterior, massive double iron & glass doors, majestic Grand Gallery & stunning spiral staircase invite you to enjoy this exquisite home.

Most memorable gatherings in the opulent Dining Room with Wine Cave.

Gorgeous Kitchen has huge island, third sink, Wolf steamer & fab microwave drawer.

Wolf 4-burner gas range with griddle, custom vent hood, Wolf Convection Ovens

Subzero 46" refrigerator/freezer, dishwasher, 2 farm-style sinks & Pantry.

Wide open, sunny Kitchen flows directly into fabulous Morning & Great Rooms toward French doors & see-through fireplace overlooking luscious Pool & Loggia.

Wet Bar/Butler's Pantry with wine chiller & ice maker & Mud Room nearby.

Unbelievable Primary Retreat has soaring 14' ceiling, more double French doors overlooking Loggia, exquisite Bath with barrel ceiling & two large closets.

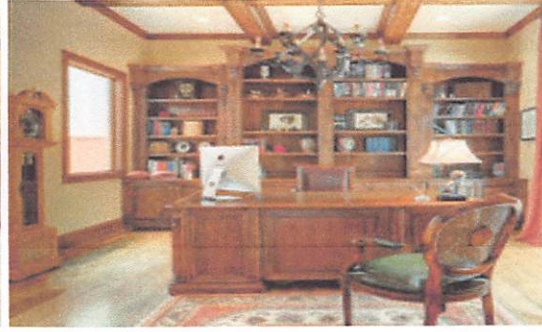
Library off Grand Gallery & over-looking Pool is well-appointed for busy executive.

Large Game Room up is perfect for game tables, TV & comfortable seating.

Adjoining Wet Bar has beverage chiller & tons of cabinets & counter space.

Three more dreamy, ensuite Bedrooms with large closets up.

Thoughtful H.O.A. cares for yard so travel-loving family can "lock & leave".



Approximate Dimensions

Grand Gallery 20' x 12'	Prim Retreat 18' x 15'	Game Rm 21' x 18'
Library 13' x 13'	Prim. Foyer 8' x 4'	Loggia (up) 8' x 20'
Dining Rm 16' x 14'	Prim. Bath 18' x 10'	Wet Bar #2 11' x 6'
Wine Cave 6' x 3'	Prim. Closet #1 13' x 9'	Bedrm #2 15' x 12'
Great Rm 21' x 18'	Prim. Closet #2 11' x 10'	Bath #2 6' x 5'
Morning Rm 14' x 11'	Laundry Rm 7' x 7'	Bedrm #3 14' x 13'
Kitchen 18' x 14'	Mud Rm 7' x 5'	Bath #3 6' x 5'
Wet Bar #1 9' x 6'	Loggia (down) 8' x 31'	Bedrm #4 16' x 11'
Powder Rm 9' x 8'	Pool 23' x 8'	Bath #4 12' x 5'

*Rear Entry 2-Car Garage plus additional parking beside Garage
Saltwater Pool, Two Loggias, Two Terraces, Two Wet Bars, Wine Cave
4 Bedrooms, 4.5 Baths, Cedar Closet*

4428 S.F., per appraisal on 6599 S.F lot, per HCAD

Custom designed & built by Rohe & Wright for Seller & first occupied 2011

Information contained herein was obtained from sources deemed reliable; however, no warranties, guarantees or representations are made as to its accuracy or completeness. This presentation is made subject to errors, omissions and changes of conditions without notice. Equal Housing Opportunity