



"A" FRONT ELEVATION - CLASSIC



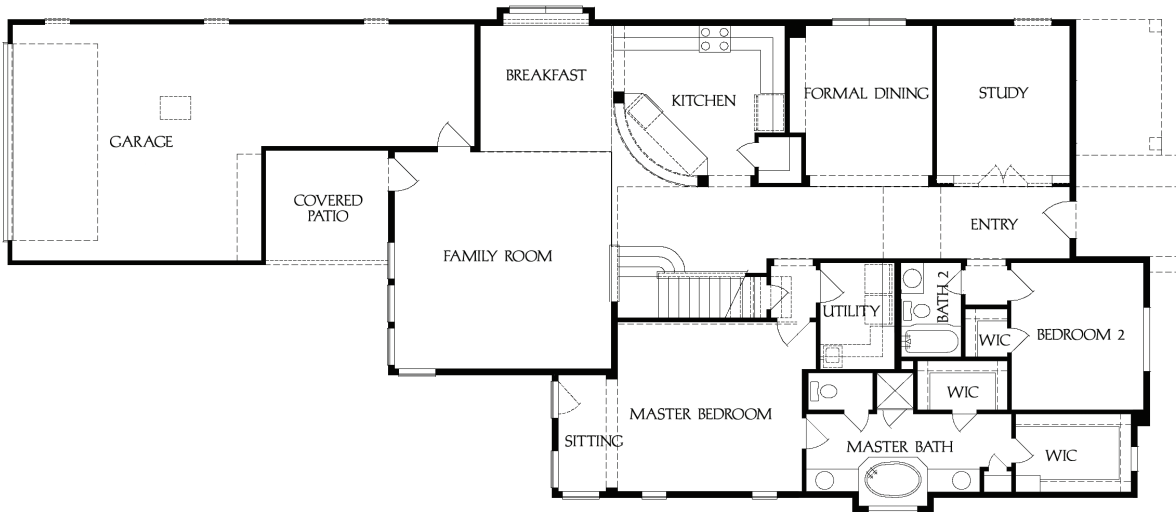
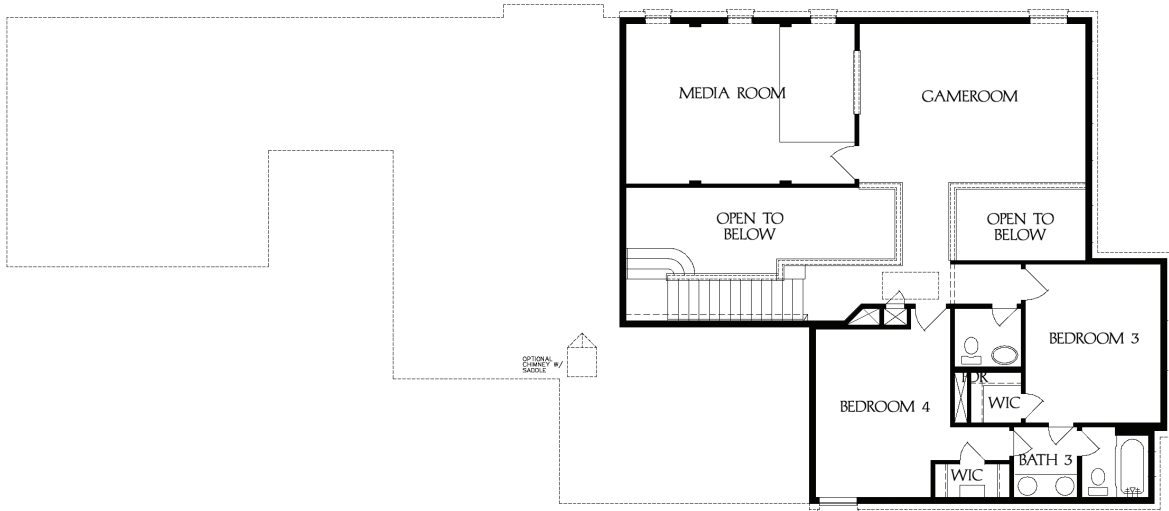
"B" FRONT ELEVATION - TUDOR



"C" FRONT ELEVATION - FRENCH



"D" FRONT ELEVATION - CRAFTSMAN



The
River Oak

4 Bedrooms
3 1/2 Baths
3200 sq. ft.

Open Kitchen, Breakfast
and Family Room
Both Formals
Gamerom
Media Room
2 Story Ceilings in Entry
Master Down
2 Bedrooms on 1st Floor
Covered Patio

Optional Fireplace
Optional Study
Optional Larger Covered Patio
Optional 4th Bath
Optional Garage Apartment
Optional Outdoor Kitchen



18326 Central Creek Drive | Cypress Texas 77433 | t (281) 304-9400 | f (281) 304-9403 | jkylehomes.com

Prices, plans, specifications, square footage and availability subject to change without notice or prior obligation. Square footage is approximate and may vary upon elevations and/or options selected. Please see Sales Counselor for more information.