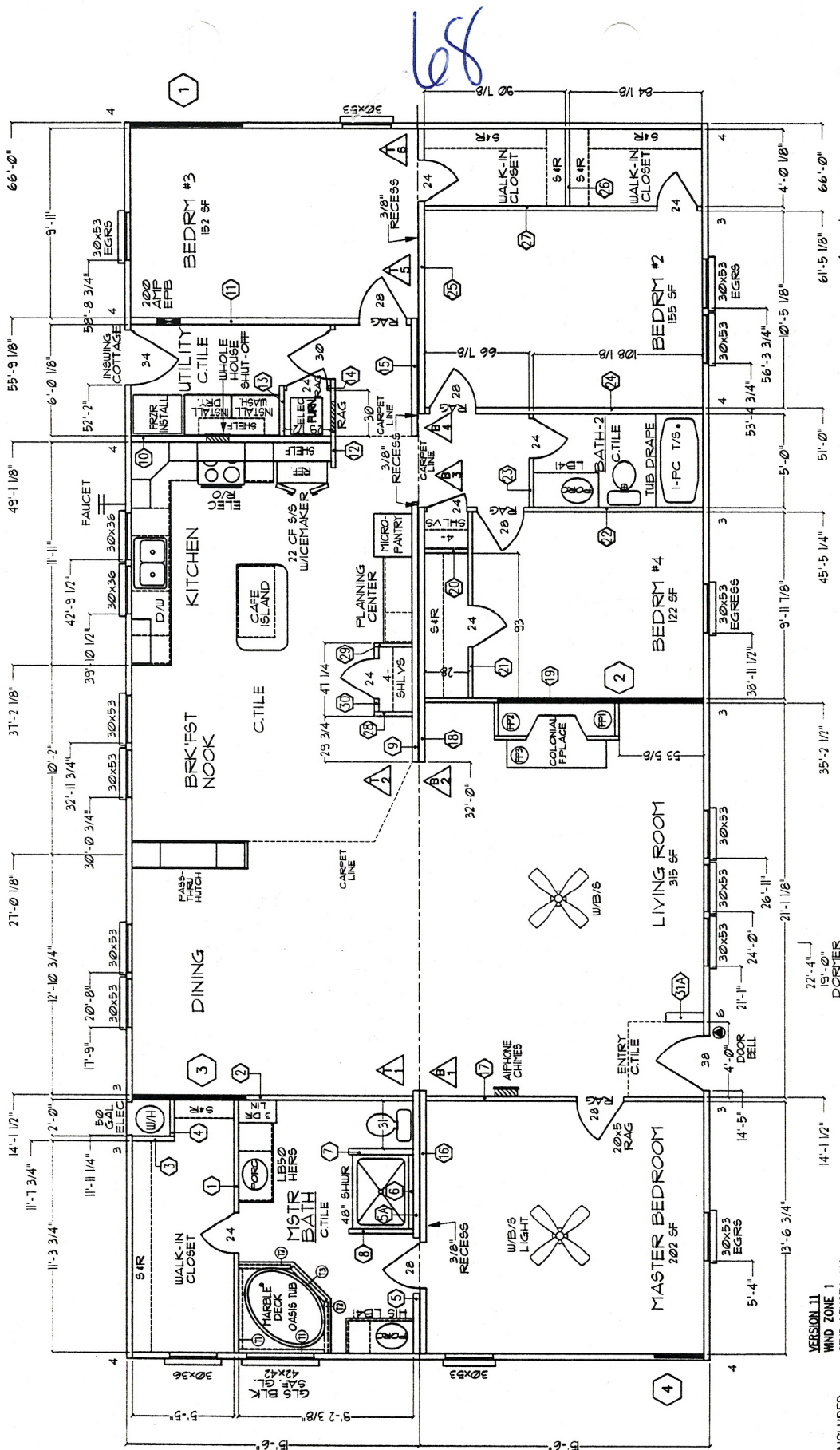


**2003 SPECS**  
**TOTAL ELECTRIC**

- 1) SHIP LOOSE CARPET
- 2) (R-38, R-II, R-11)
- 3) DUAL PANE WINDOWS
- 4) OSB SIDING
- 5) KOOL-PLY
- 6) UPFLOW DUCT SYSTEM
- 7) SHIP LOOSE CARPET
- 8) BATH HARDWARE (BOTH)
- 9) T & T T/O (includes clo/pant.)

- 10) BRKFAST NOOK
- 11) KITCHEN
- 12) PLANNING CENTER
- 13) MICRO-PANTRY
- 14) BATH-2
- 15) BEDRM #4
- 16) LIVING ROOM
- 17) W/B/S
- 18) W/B/S
- 19) W/B/S
- 20) W/B/S
- 21) W/B/S
- 22) W/B/S
- 23) W/B/S
- 24) W/B/S
- 25) W/B/S
- 26) W/B/S
- 27) W/B/S
- 28) W/B/S
- 29) W/B/S
- 30) W/B/S
- 31) W/B/S
- 32) W/B/S
- 33) W/B/S
- 34) W/B/S
- 35) W/B/S
- 36) W/B/S
- 37) W/B/S
- 38) W/B/S
- 39) W/B/S
- 40) W/B/S
- 41) W/B/S
- 42) W/B/S
- 43) W/B/S
- 44) W/B/S
- 45) W/B/S
- 46) W/B/S
- 47) W/B/S
- 48) W/B/S
- 49) W/B/S
- 50) W/B/S
- 51) W/B/S
- 52) W/B/S
- 53) W/B/S
- 54) W/B/S
- 55) W/B/S
- 56) W/B/S
- 57) W/B/S
- 58) W/B/S
- 59) W/B/S
- 60) W/B/S
- 61) W/B/S
- 62) W/B/S
- 63) W/B/S
- 64) W/B/S
- 65) W/B/S
- 66) W/B/S
- 67) W/B/S
- 68) W/B/S
- 69) W/B/S
- 70) W/B/S
- 71) W/B/S
- 72) W/B/S
- 73) W/B/S
- 74) W/B/S
- 75) W/B/S
- 76) W/B/S
- 77) W/B/S
- 78) W/B/S
- 79) W/B/S
- 80) W/B/S
- 81) W/B/S
- 82) W/B/S
- 83) W/B/S
- 84) W/B/S
- 85) W/B/S
- 86) W/B/S
- 87) W/B/S
- 88) W/B/S
- 89) W/B/S
- 90) W/B/S

- 1) SHINGLES (WEATHERWOOD)
- 2) (R-38, R-II, R-11)
- 3) DUAL PANE WINDOWS
- 4) OSB SIDING
- 5) KOOL-PLY
- 6) UPFLOW DUCT SYSTEM



**WIND ZONE 1 BAHAMA BREEZE DECOR 17068**

DESIGNATION: FLOOR PLAN (8674B)

MODEL: PHT466A5

SERIES: PALMHARBOR

DATE: 12/17/98

REVISION: INIT.

DATE: 12/16/02

REVISION: MARBLE DECK OASIS TUB

DATE: 12/16/02

REVISION: RG

DATE: 12/16/02

REVISION: INIT.

DATE: 12/17/98

REVISION: JDE

DATE: 12/17/98

REVISION: JDE

**Palm Harbor Homes PLT LLC**

© COPYRIGHT 1995

WIND ZONE 1

STUD LENGTH: 116

VERSION 11

WIND ZONE 1

STUD LENGTH: 116

VERSION 9

WINDLOAD: 15 PSF

SN-JOIST: #2 SPF

DATA FILE: 1668216.210

STD JOISTS: 2x8 @ 16.0 O/C, #2 SPF

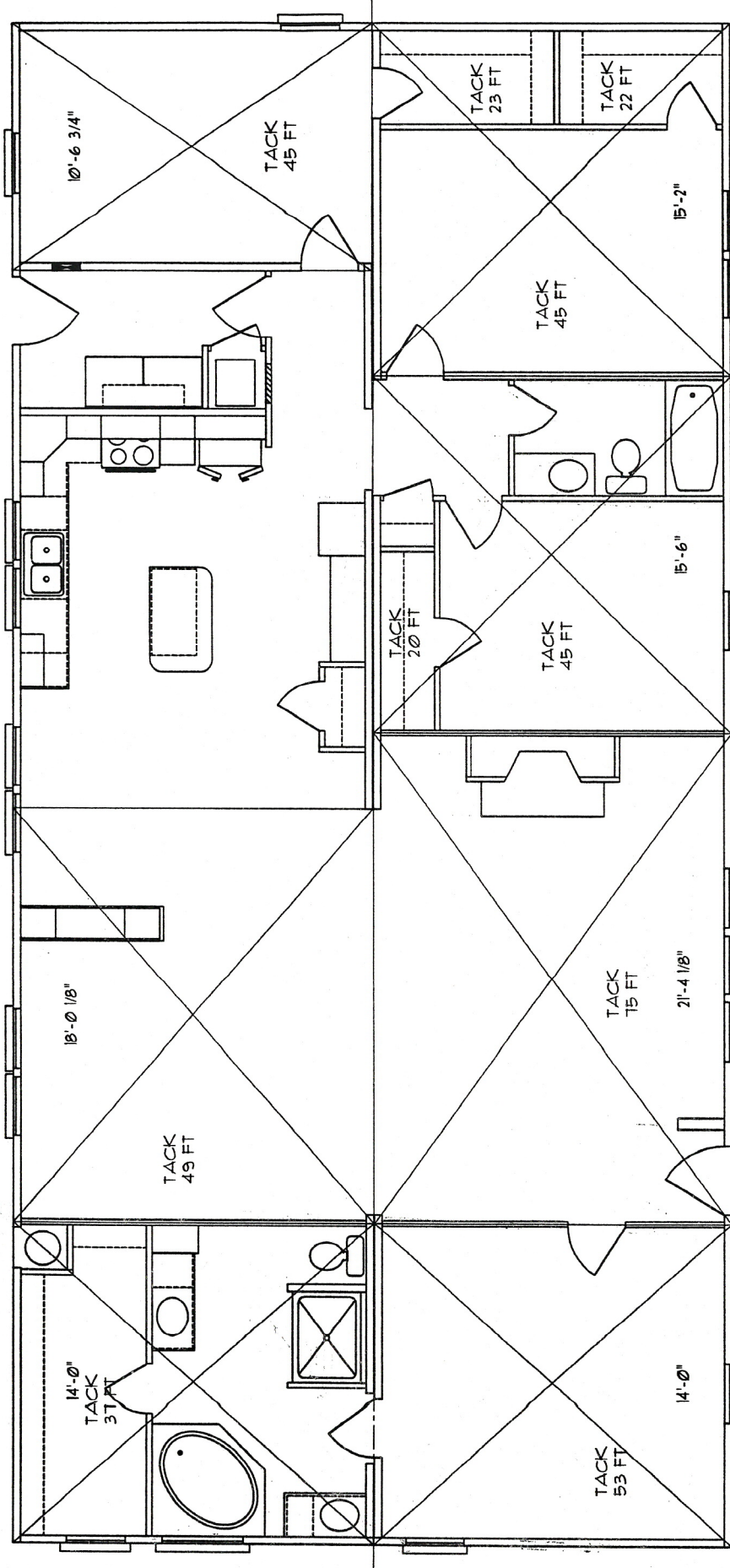
SIDE WALL HEIGHT: 90

\*\* - OPTIMIZED FOR AVAILABLE WALL SPACE

\*\* - USE SINGLE JOIST WITH BLOCKS

NO.	TRUSS	REDUCTION	INCLUDED	VERSION 11		VERSION 9		STD. JOIST	MAX. STRETCH	MAX. LOAD	ROOF TYPE	BLK LOAD	TYPE	STUD #	BLK LOAD	TYPE	STUD #	BLK LOAD	TYPE	STUD #			
				NO.	TRUSS	REDUCTION	INCLUDED														NO.	TRUSS	REDUCTION
1	T	0	2	1	5	17'-8"	0	2	4'-2x4	N	2058	2	5'-2x4	N	2940	2	5'-2x4	N	2940	2	5'-2x4	N	2940
1	B	0	2	1	5	17'-8"	0	2	4'-2x4	N	2058	2	5'-2x4	N	2940	2	5'-2x4	N	2940	2	5'-2x4	N	2940
2	T	0	2	1	5	17'-8"	0	2	4'-2x4	N	2058	2	5'-2x4	N	2940	2	5'-2x4	N	2940	2	5'-2x4	N	2940
2	B	0	2	1	5	17'-8"	0	2	4'-2x4	N	2058	2	5'-2x4	N	2940	2	5'-2x4	N	2940	2	5'-2x4	N	2940
3	B	0	1	2	5'-0"	0	2	2'-2x4	N	687	2	2'-2x4	N	982	2	2'-2x4	N	982	2	2'-2x4	N	982	
4	B	0	1	2	5'-0"	0	2	2'-2x4	N	687	2	2'-2x4	N	982	2	2'-2x4	N	982	2	2'-2x4	N	982	
5	T	0	1	3	9'-11"	0	2	2'-2x4	N	1221	2	3'-2x4	N	1744	2	3'-2x4	N	1744	2	3'-2x4	N	1744	
6	T	0	1	3	9'-11"	0	2	1'-2x4	N	1221	1	1'-2x4	N	1744	1	1'-2x4	N	1744	1	1'-2x4	N	1744	

68



85 PIECES 60" TACK STRIP  
 5 ROLLS OF CARPET PAD 360 SQ. FT  
 107 LIN FT.  
 32 WIDE CARPET

DESIGNATION: CARPET (86T4B)		MODEL PHT466A5	DRAWN BY
DATE		SERIES PALMHARBOR	DATE 1/15/99
DATE		REVISION	INIT.



Palm Harbor Homes  
 P.L.L.D.C.  
 © COPYRIGHT 1995