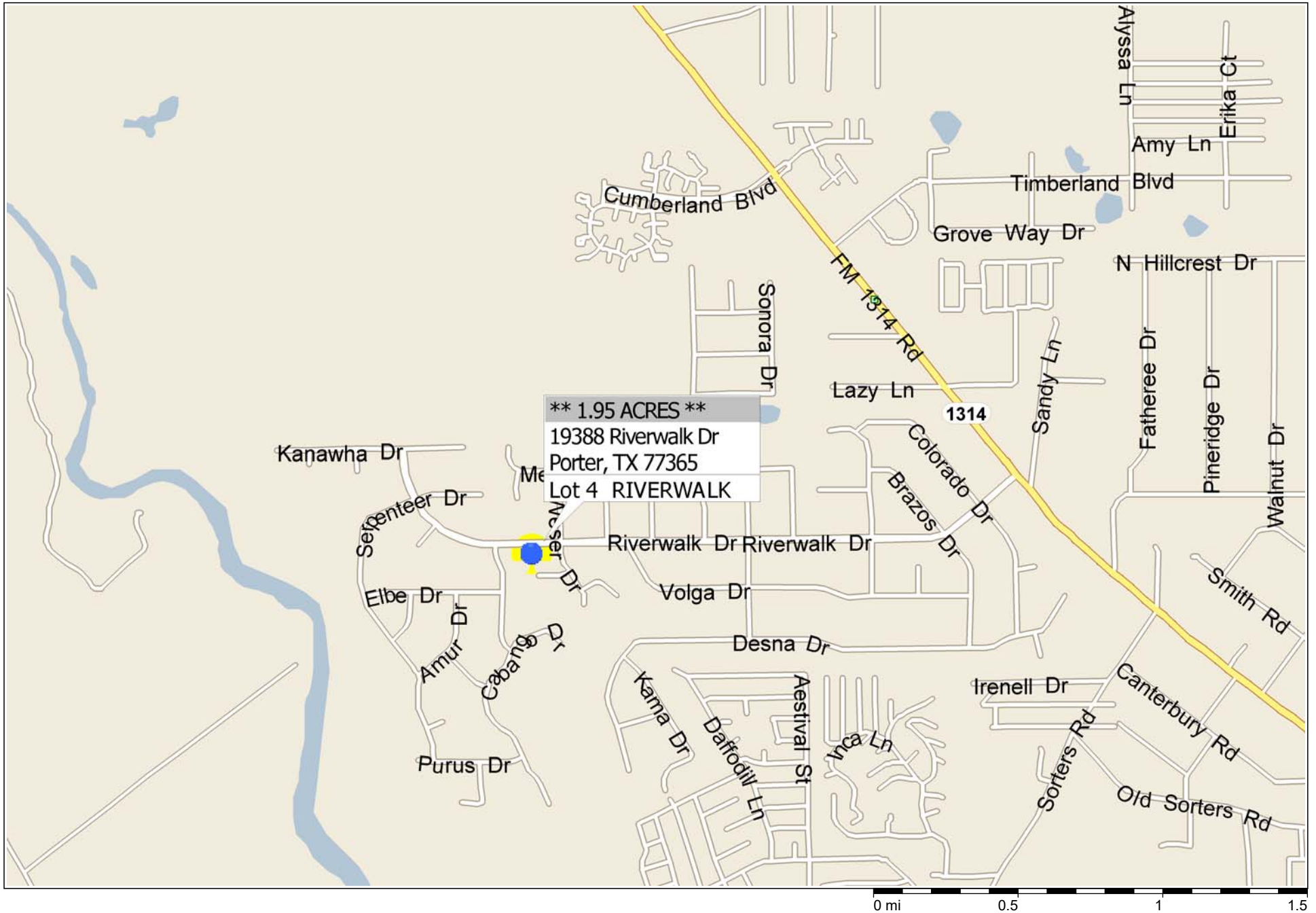
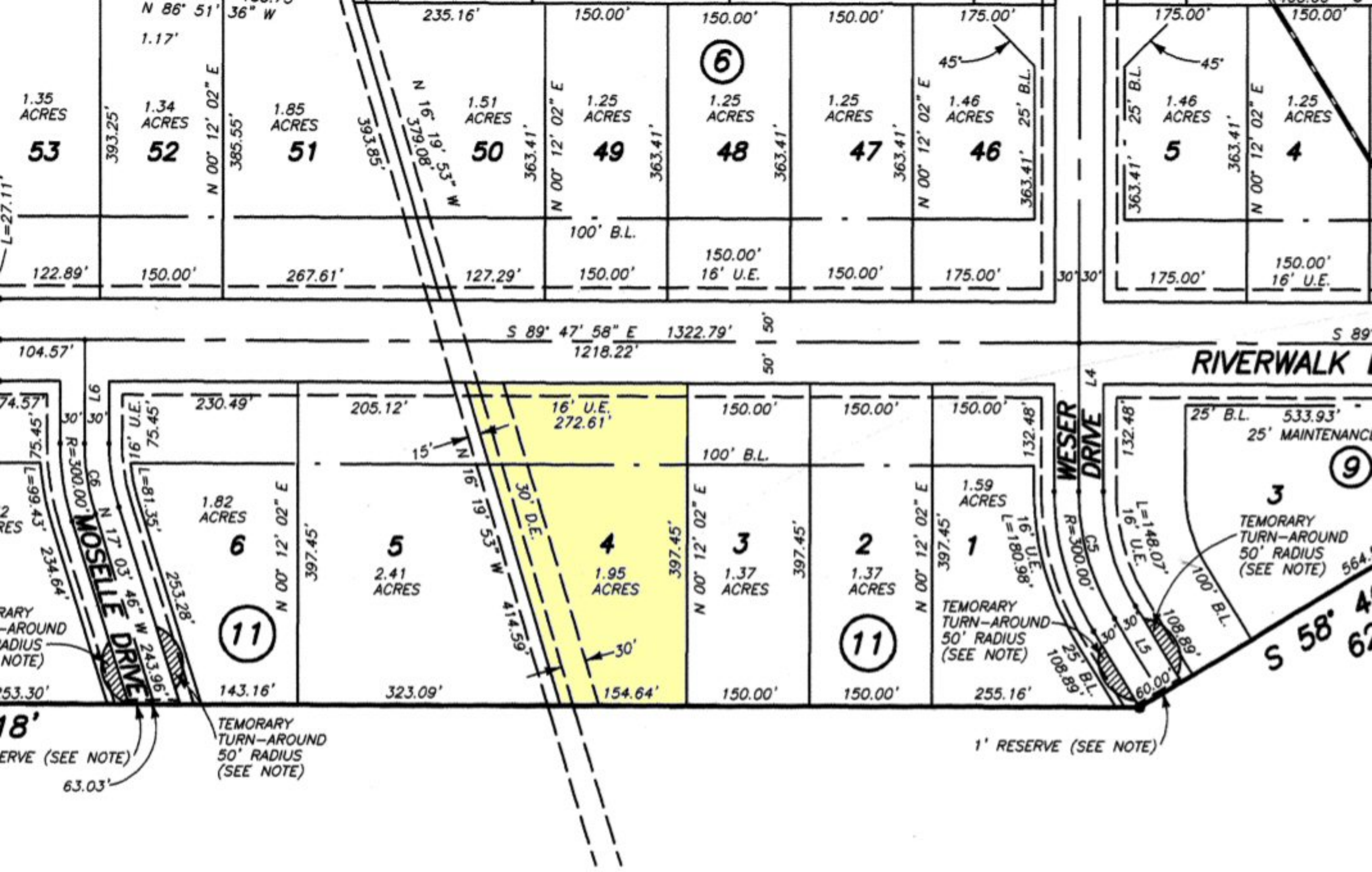


*** 1.95 ACRES *** 19388 Riverwalk Dr ~ MONTGOMERY County TX



**** 1.95 ACRES ****
19388 Riverwalk Dr
Porter, TX 77365
Lot 4 RIVERWALK



1.35 ACRES
53

1.34 ACRES
52

1.85 ACRES
51

1.51 ACRES
50

1.25 ACRES
49

6
1.25 ACRES
48

1.25 ACRES
47

1.46 ACRES
46

1.46 ACRES
5

1.25 ACRES
4

1.82 ACRES
6

2.41 ACRES
5

1.95 ACRES
4

1.37 ACRES
3

1.37 ACRES
2

1.59 ACRES
1

11

11

9

3
TEMORARY
TURN-AROUND
50' RADIUS
(SEE NOTE)

TEMORARY
TURN-AROUND
50' RADIUS
(SEE NOTE)

TEMORARY
TURN-AROUND
50' RADIUS
(SEE NOTE)

1' RESERVE (SEE NOTE)

18'
ERVE (SEE NOTE)

RIVERWALK

WESER
DRIVE

MOSELLE
DRIVE

S 89° 47' 58" E 1322.79'
1218.22'

104.57'

74.57'
75.45'
75.45'
L=99.43'
R=300.00'

97.36'
30'
C6
N 17° 03' 46" W 243.96'

53.30'

18'

63.03'

18'

230.49'

205.12'

16' U.E.
272.61'

150.00'

150.00'

150.00'

132.48'

1.82 ACRES

2.41 ACRES

1.95 ACRES

1.37 ACRES

1.37 ACRES

1.59 ACRES

143.16'

323.09'

154.64'

150.00'

150.00'

255.16'

397.45'

397.45'

397.45'

397.45'

397.45'

397.45'

108.89'

108.89'

108.89'

108.89'

108.89'

108.89'

108.89'

108.89'

108.89'

108.89'

108.89'

108.89'

108.89'

108.89'

108.89'

108.89'

108.89'

108.89'

108.89'

108.89'

108.89'

108.89'

108.89'

108.89'

108.89'

108.89'

108.89'

108.89'

108.89'

108.89'

108.89'

108.89'

108.89'

108.89'

108.89'

108.89'

108.89'

108.89'

108.89'

108.89'

108.89'

108.89'

108.89'

108.89'

108.89'

108.89'

108.89'

108.89'

108.89'

108.89'

108.89'

108.89'

108.89'

108.89'

108.89'

108.89'

108.89'

108.89'

108.89'

108.89'

108.89'

108.89'

108.89'

108.89'

108.89'

108.89'

108.89'

108.89'

108.89'

108.89'

108.89'

108.89'

108.89'

108.89'

108.89'

108.89'

108.89'

108.89'

108.89'

108.89'

108.89'

108.89'

108.89'

108.89'

108.89'

108.89'

108.89'

108.89'

108.89'

108.89'

108.89'

108.89'

108.89'

108.89'

108.89'

108.89'

108.89'

108.89'

108.89'

108.89'

108.89'

108.89'

108.89'

108.89'

108.89'

108.89'

108.89'

108.89'

108.89'

108.89'

108.89'

108.89'

108.89'

108.89'

108.89'

108.89'

108.89'

108.89'

108.89'

108.89'

108.89'

108.89'

108.89'

108.89'

108.89'

108.89'

108.89'

108.89'

108.89'

108.89'

108.89'

108.89'

108.89'

108.89'

108.89'

108.89'

108.89'

108.89'

108.89'

108.89'

108.89'

108.89'

108.89'

108.89'

108.89'

108.89'

108.89'

108.89'

108.89'

108.89'

108.89'

108.89'

108.89'

108.89'

108.89'

108.89'

108.89'

108.89'

108.89'

108.89'

108.89'

108.89'

108.89'

108.89'

108.89'

108.89'

108.89'

108.89'

108.89'

108.89'

108.89'

108.89'

108.89'

108.89'

108.89'

108.89'

108.89'

108.89'

108.89'

108.89'

108.89'

108.89'

108.89'

108.89'

108.89'

108.89'

108.89'

108.89'

108.89'

108.89'

108.89'

108.89'

108.89'

108.89'

108.89'

108.89'

108.89'

108.89'

108.89'

108.89'

108.89'

108.89'

108.89'

108.89'

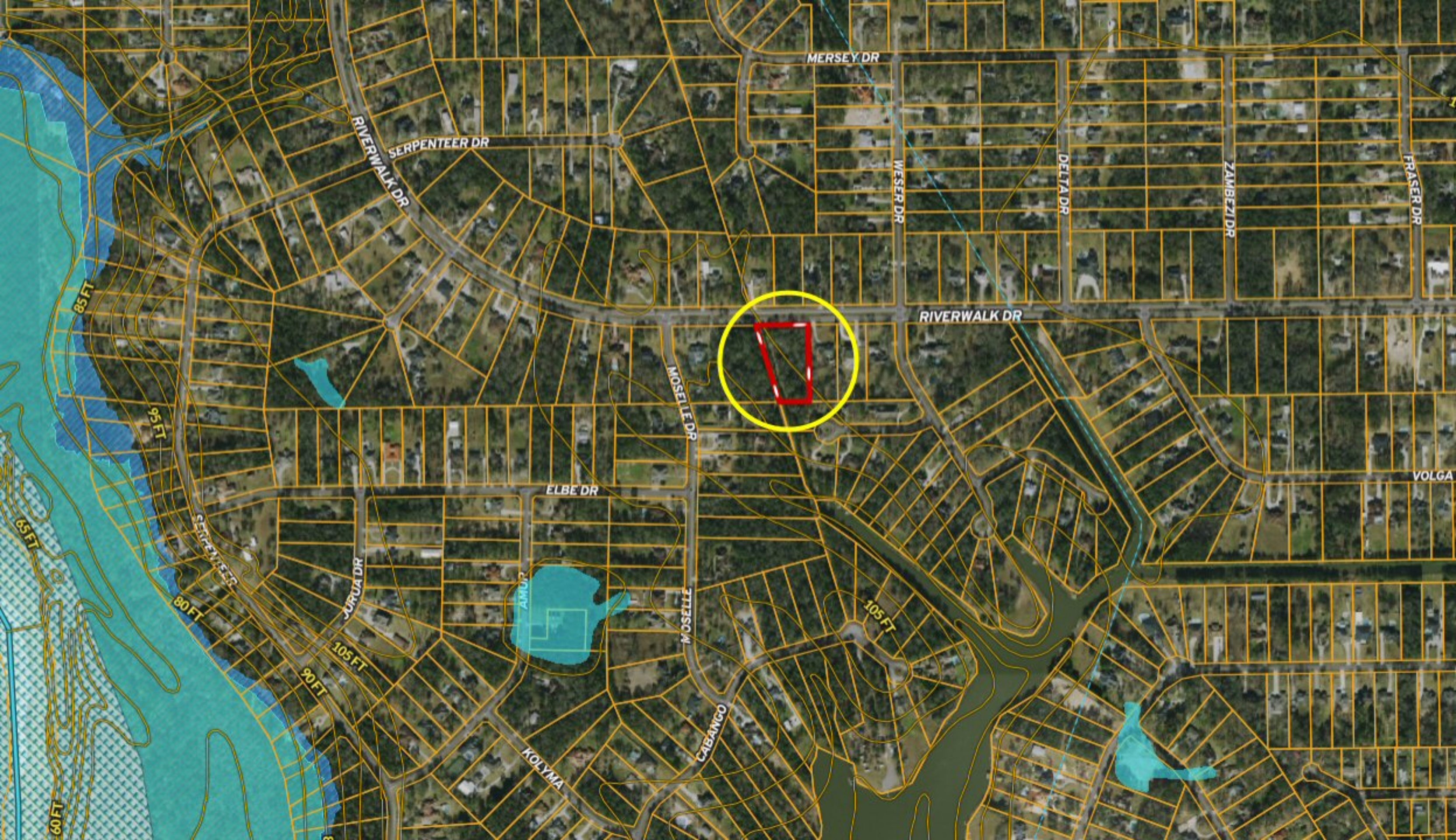
108.89'

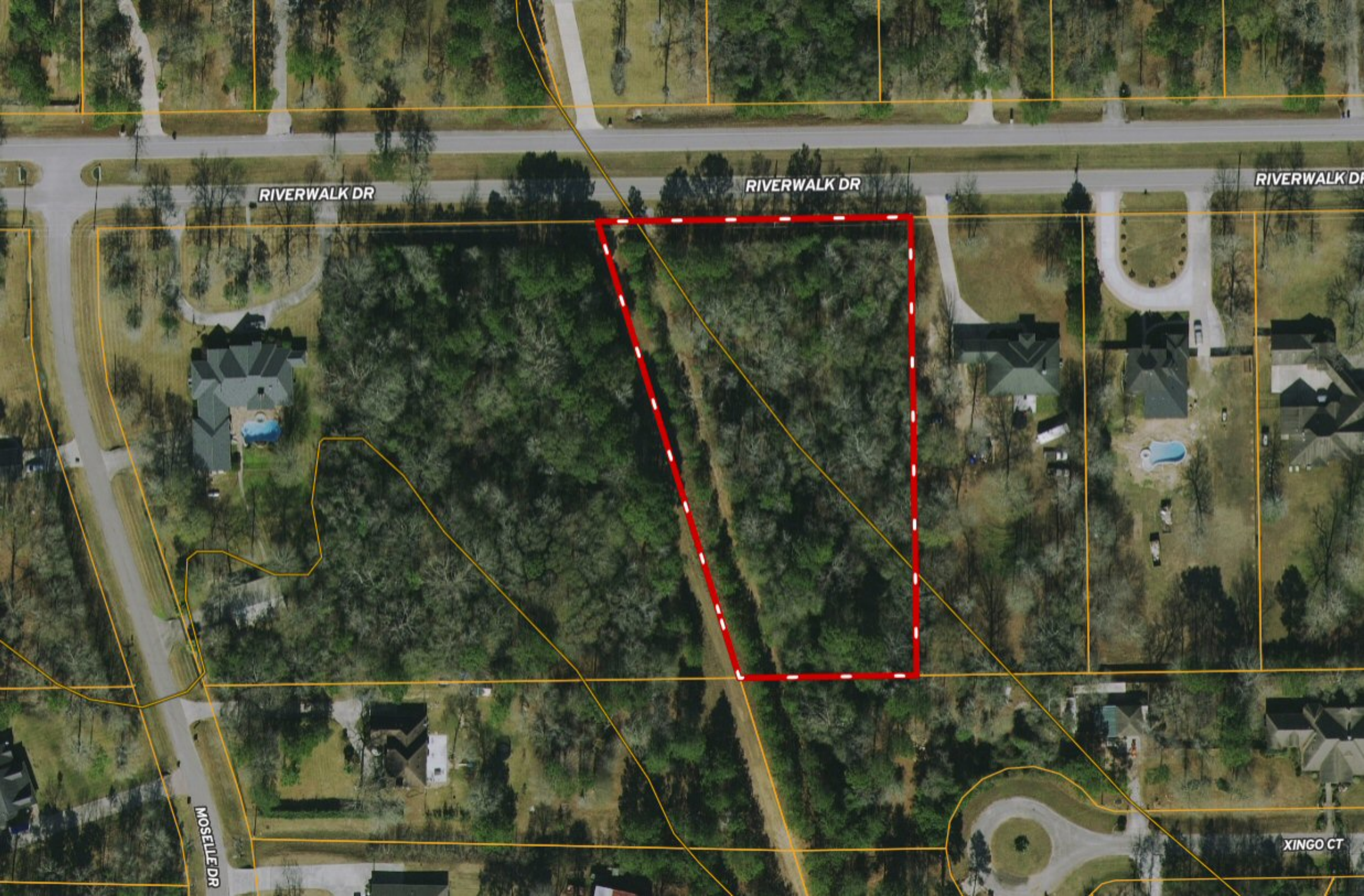
108.89'

108.89'

108.89'

108.89'





RIVERWALK DR

RIVERWALK DR

RIVERWALK DR

MOSELLE DR

XINGO CT