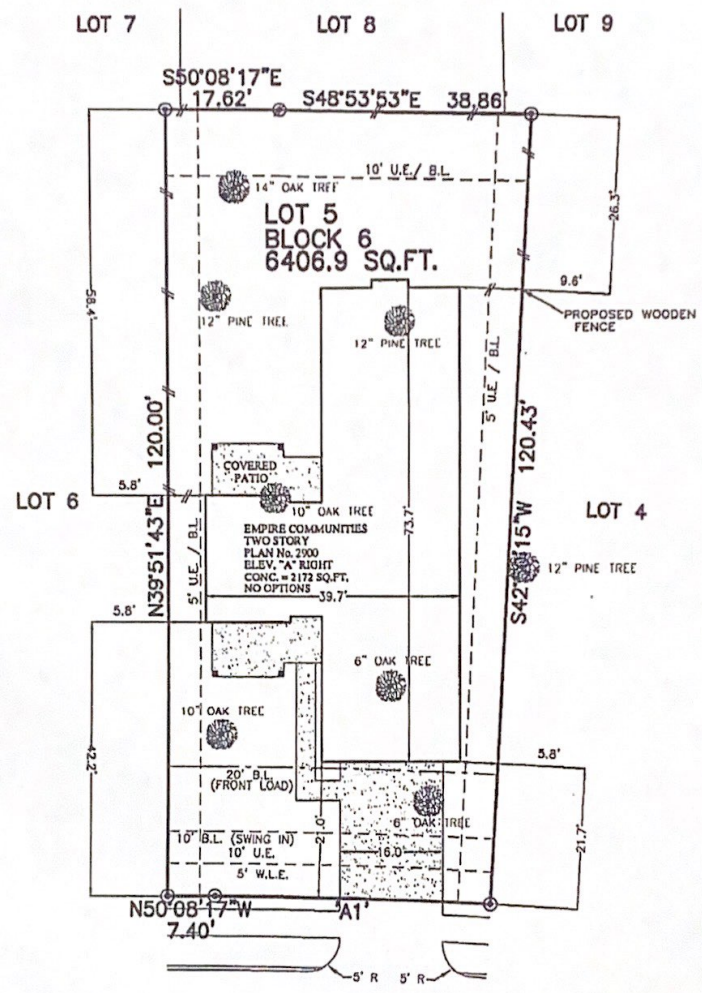


LEGEND	WOODEN FENCE	ELEV. ELEVATION	(B.O.) BUILDER GUIDELINES	INLET	MANHOLE & INLET	ELECTRIC BOX	TELEPHONE PEDESTAL	PAD MOUNTED TRANSFORMER
FLATWORK	WROUGHT IRON FENCE	T.O.F. TOP OF FORM	M.A.E. MAINTENANCE EASEMENT	UTILITY VAULT	FOUND	CABLE PEDESTAL	FIRE HYDRANT	GRATE DRAIN
PROPERTY LINE	CHAIN LINK FENCE	F.F. FINISHED FLOOR	R.O.W. RIGHT-OF-WAY	PHD. BUILDING	A.E. AERIAL EASEMENT	WATER METER	LIGHT POLE	METER
BUILDING LINE	OVERHEAD ELECTRIC	EXT. EXTENDED	S.L.E. STREET LIGHT EASEMENT	DRN. DRAINAGE	S.S.E. SANITARY SEWER EASEMENT	WATER VALVE	PROPERTY CORNER	MANHOLE
BUILDING LINE	B.L. BUILDING LINE	PVT. PRIVATE	D.E. DRAINAGE EASEMENT	E.E. ELECTRIC EASEMENT	S.T.M.S.E. STORM SEWER EASEMENT	WATER VALVE	PROPERTY CORNER	MANHOLE
EASEMENT	U.E. UTILITY EASEMENT	CONC. CONCRETE	E.E. ELECTRIC EASEMENT	S.S.E. SANITARY SEWER EASEMENT	S.T.M.S.E. STORM SEWER EASEMENT	WATER VALVE	PROPERTY CORNER	MANHOLE
	W.L.E. WATER LINE EASEMENT	I.R. IRON ROD	S.T.M.S.E. STORM SEWER EASEMENT	S.T.M.S.E. STORM SEWER EASEMENT	S.T.M.S.E. STORM SEWER EASEMENT	WATER VALVE	PROPERTY CORNER	MANHOLE
		I.P. IRON PIPE	S.T.M.S.E. STORM SEWER EASEMENT	S.T.M.S.E. STORM SEWER EASEMENT	S.T.M.S.E. STORM SEWER EASEMENT	WATER VALVE	PROPERTY CORNER	MANHOLE

ARC TABLE				
ARC	LEN.	RAD.	CHRD.	BRG.
'A1'	42.85'	825.00'	S48°39'02"E	



122 GRANT COVE DRIVE
(50' R.O.W.)

- NOTES:
1. ALL BEARINGS SHOWN HEREON ARE BASED ON THE RECORDED PLAT.
 2. THIS PLOT PLAN WAS PREPARED WITHOUT BENEFIT OF A TITLE REPORT. THERE MAY BE EASEMENTS, BUILDING LINES & OTHER MATTERS OF RECORD NOT SHOWN HEREON. SURVEYOR OR ALLPOINTS SERVICES CORP. IS NOT LIABLE FOR ANY DAMAGES THAT MAY INCUR IN ANY EVENT THE BUILDER BUILDS ANY IMPROVEMENTS CLOSER THAN 5.0' OR WITHIN AN EASEMENT.

PLOT PLAN
SCALE: 1 = 20'

© 2017, ALLPOINTS SERVICES CORP., ALL RIGHTS RESERVED

FOR: EMPIRE COMMUNITIES
ADDRESS:
122 GRANT COVE DRIVE
ALLPOINTS JOB #: EC129891 KM
G.P.: KM

LOT 5, BLOCK 6,
WOODFOREST, SECTION 62,
CABINET Z, SHEETS 4054-4058, MAP RECORDS
MONTGOMERY COUNTY, TEXAS



ALLPOINTS
SERVICES CORP
PHONE: 713-468-7707
T.B.P.L.S. No. 10122600

ISSUE DATE: 2/20/2017
ISSUE DATE: 2/14/2017