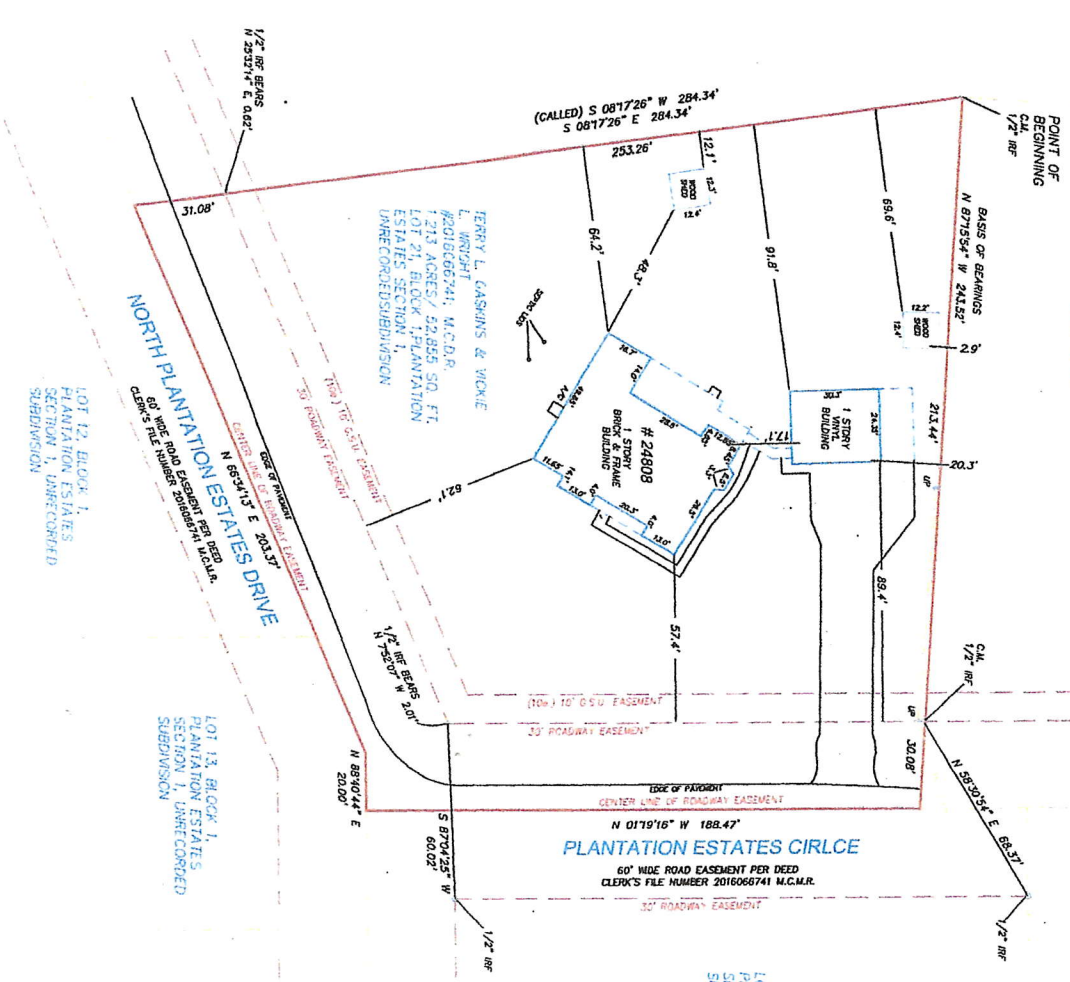


LOT 23, BLOCK 1,
PLANTATION ESTATES
SECTION 1, UNRECORDED
SUBDIVISION

POINT OF
COMMENCING
NORTHWEST CORNER
PLANTATION ESTATES, SECTION 1,
SUBDIVISION

LOT 20, BLOCK 1,
PLANTATION ESTATES
SECTION 1, UNRECORDED
SUBDIVISION

LOT 12, BLOCK 1,
PLANTATION ESTATES
SECTION 1, UNRECORDED
SUBDIVISION



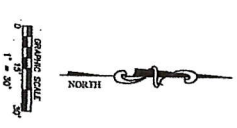
LOT 24, BLOCK 1,
PLANTATION ESTATES
SECTION 1, UNRECORDED
SUBDIVISION

POINT OF
BEGINNING

LOT 13, BLOCK 1,
PLANTATION ESTATES
SECTION 1, UNRECORDED
SUBDIVISION

PLANTATION ESTATES CIRCLE
60' WIDE ROAD EASEMENT PER DEED
CLERK'S FILE NUMBER 201606741 M.C.M.R.

LEGAL DESCRIPTION
ALL THAT CERTAIN LOTS 12, 13, 20, 21, 23, AND 24, BLOCK 1, PLANTATION ESTATES, SECTION 1, UNRECORDED SUBDIVISION, TOWN OF PALM BEACH, COUNTY OF PALM BEACH, STATE OF FLORIDA, AS SHOWN ON THE ATTACHED SURVEY MAP AND AS MORE FULLY DESCRIBED BY THE LEGAL DESCRIPTION HEREIN, ARE HEREBY CONFIRMED AND RECORDED AS SHOWN ON THE ATTACHED SURVEY MAP AND AS MORE FULLY DESCRIBED BY THE LEGAL DESCRIPTION HEREIN. THE SURVEY MAP AND LEGAL DESCRIPTION HEREOF ARE HEREBY CONFIRMED AND RECORDED AS SHOWN ON THE ATTACHED SURVEY MAP AND AS MORE FULLY DESCRIBED BY THE LEGAL DESCRIPTION HEREIN. THE SURVEY MAP AND LEGAL DESCRIPTION HEREOF ARE HEREBY CONFIRMED AND RECORDED AS SHOWN ON THE ATTACHED SURVEY MAP AND AS MORE FULLY DESCRIBED BY THE LEGAL DESCRIPTION HEREIN. THE SURVEY MAP AND LEGAL DESCRIPTION HEREOF ARE HEREBY CONFIRMED AND RECORDED AS SHOWN ON THE ATTACHED SURVEY MAP AND AS MORE FULLY DESCRIBED BY THE LEGAL DESCRIPTION HEREIN.



RESIDENTIAL LAND SERVICES

3550 W. Robison Blvd. Third Floor
Naples, Orlando 32707
Main Office Phone No: 405-553-3444
www.residential.com

RESIDENTIAL LAND SERVICES

1. PROPERTY SERVICES
2. TITLE SERVICES
3. COMMERCIAL SERVICES
4. INVESTMENT SERVICES
5. ESTATE SERVICES
6. RENTAL SERVICES
7. FINANCIAL SERVICES
8. LEGAL SERVICES
9. TAX SERVICES
10. BUSINESS SERVICES

RESIDENTIAL LAND SERVICES

1. COMMERCIAL SERVICES
2. INVESTMENT SERVICES
3. ESTATE SERVICES
4. RENTAL SERVICES
5. FINANCIAL SERVICES
6. LEGAL SERVICES
7. TAX SERVICES
8. BUSINESS SERVICES

RESIDENTIAL LAND SERVICES

1. COMMERCIAL SERVICES
2. INVESTMENT SERVICES
3. ESTATE SERVICES
4. RENTAL SERVICES
5. FINANCIAL SERVICES
6. LEGAL SERVICES
7. TAX SERVICES
8. BUSINESS SERVICES



RESIDENTIAL LAND SERVICES

1. COMMERCIAL SERVICES
2. INVESTMENT SERVICES
3. ESTATE SERVICES
4. RENTAL SERVICES
5. FINANCIAL SERVICES
6. LEGAL SERVICES
7. TAX SERVICES
8. BUSINESS SERVICES

RESIDENTIAL LAND SERVICES

1. COMMERCIAL SERVICES
2. INVESTMENT SERVICES
3. ESTATE SERVICES
4. RENTAL SERVICES
5. FINANCIAL SERVICES
6. LEGAL SERVICES
7. TAX SERVICES
8. BUSINESS SERVICES

RESIDENTIAL LAND SERVICES

1. COMMERCIAL SERVICES
2. INVESTMENT SERVICES
3. ESTATE SERVICES
4. RENTAL SERVICES
5. FINANCIAL SERVICES
6. LEGAL SERVICES
7. TAX SERVICES
8. BUSINESS SERVICES