

R. Kuykendall Lg. A - 40

Mrs. Erna Dennis
call 442.40 Ac.
F291 D.R.

S.H. Kacer, etvir
call 1,000.00 Ac.
778/570 D.R.

Otto Hinze
call 20 Ac.
471/15 D.R.

FRANK
S.F. Austin Lg. No. 3 A - 3

P.O.B.
35.0 Ac.

Lot No. 3

Lot No. 2
35.0 Ac.

Lot No. 1

M.R. Kacer, etvir
call 1,000.00 Ac.
497/519 D.R.

Lot No. 4

Lot No. 3

Lot No. 2

Lot No. 1

M.R. Kacer, etvir
call 1,000.00 Ac.
497/519 D.R.

Bert L. Hoshea
call 18 Ac.
758/286 D.R.

P.O.B.
24.16 Ac.

Lot No. 3

Lot No. 2

Lot No. 1

M.R. Kacer, etvir
call 1,000.00 Ac.
497/519 D.R.

F.A. Kurtz Partition

2/332; Probate Minutes

See Detail

26.0 Ac.
- 1.84 Ac.
24.16 Ac. Net

24.16 Ac.
Detail
Scale: 1" = 30'

Lot No. 7

Lot No. 8

Lot No. 9

SURVEY PLAT

SHOWING A 35.0 AC. TRACT OF LAND, A 24.16 AC. TRACT OF LAND, AND A 21.2 AC. TRACT OF LAND SITUATED IN THE S. F. AUSTIN LEAGUE NO. 3, ABSTRACT NO. 3, WHARTON COUNTY, TEXAS; SAID 35.0 AC. TRACT, 24.16 AC. TRACT AND 21.2 AC. TRACT BEING MORE PARTICULARLY DESCRIBED BY METES AND BOUNDS ATTACHED.

NOTE: Bearings are based on the Texas Coordinate System of 1983, Texas South-Central Zone.

I, Robert W. Kolacny, Registered Professional Land Surveyor No. 5319, do hereby certify that the foregoing Plat correctly describes results of a Survey made under my supervision on the ground, August 13, 2012.

Billie Jo Kurtz
call 5.945 Ac.
635/746; D.R.

(Evelyn Kurtz Warner)
(call 6.00 Ac.)
(521/782; D.R.)

Gary W. Blair
call 6.00 Ac.
635/548; D.R.

(William Kurtz)
(call 6.00 Ac.)
(521/782; D.R.)

Leroy B. Kurtz, etux
call 18 Ac.
2/337; Probate Minutes

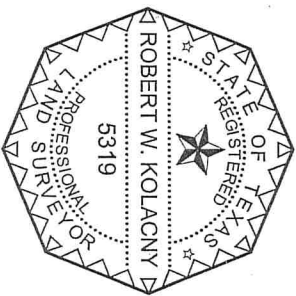
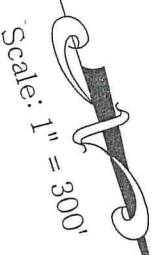
21.2 Ac.

Leroy Bernard Kurtz
call 6 Ac.
318/93; D.R.

Glen Mariner
call 7.7 Ac.
127/785; O.R.

1.84 Ac.
Dennis Ray Campbell, etux
Carol Lee Campbell
640/78; O.R.

Set 5/8" I.R.
capped #2320
at 105.84'



Robert W. Kolacny
Registered Professional Land Surveyor No. 5319
Ph. (979) 532-8056 Fax (979) 532-0342

Katherine K. Blair
call 1.00 Ac.
664/602; D.R.

P.O.B.
21.2 Ac.

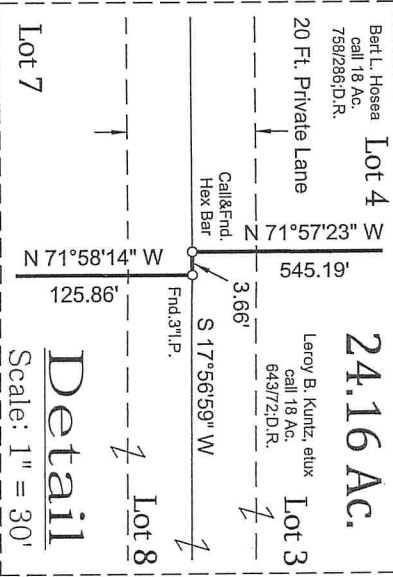
Melnar
call 1,079.00 Ac.
5/8" I.R.
5/6/79; D.R.

Call&Fnd.
3/4" I.P.
at 933.01'

(Old Hinze Road)

F.M. Hwy. No. 640 (Tx-Dot)

F.M. Hwy. No. 640



FILE: Kurtz Partition 8-13-2012
PROJECT: SpanishCamp
CRD: SpaCRD
BY: PVA

Robert Kolacny & Assoc. LLC
- Registered Professional Land Surveyors -
140 S. Houston St. - Wharton, TX 77488
OFFICE (979) 532-8056 - FAX (979) 532-0342