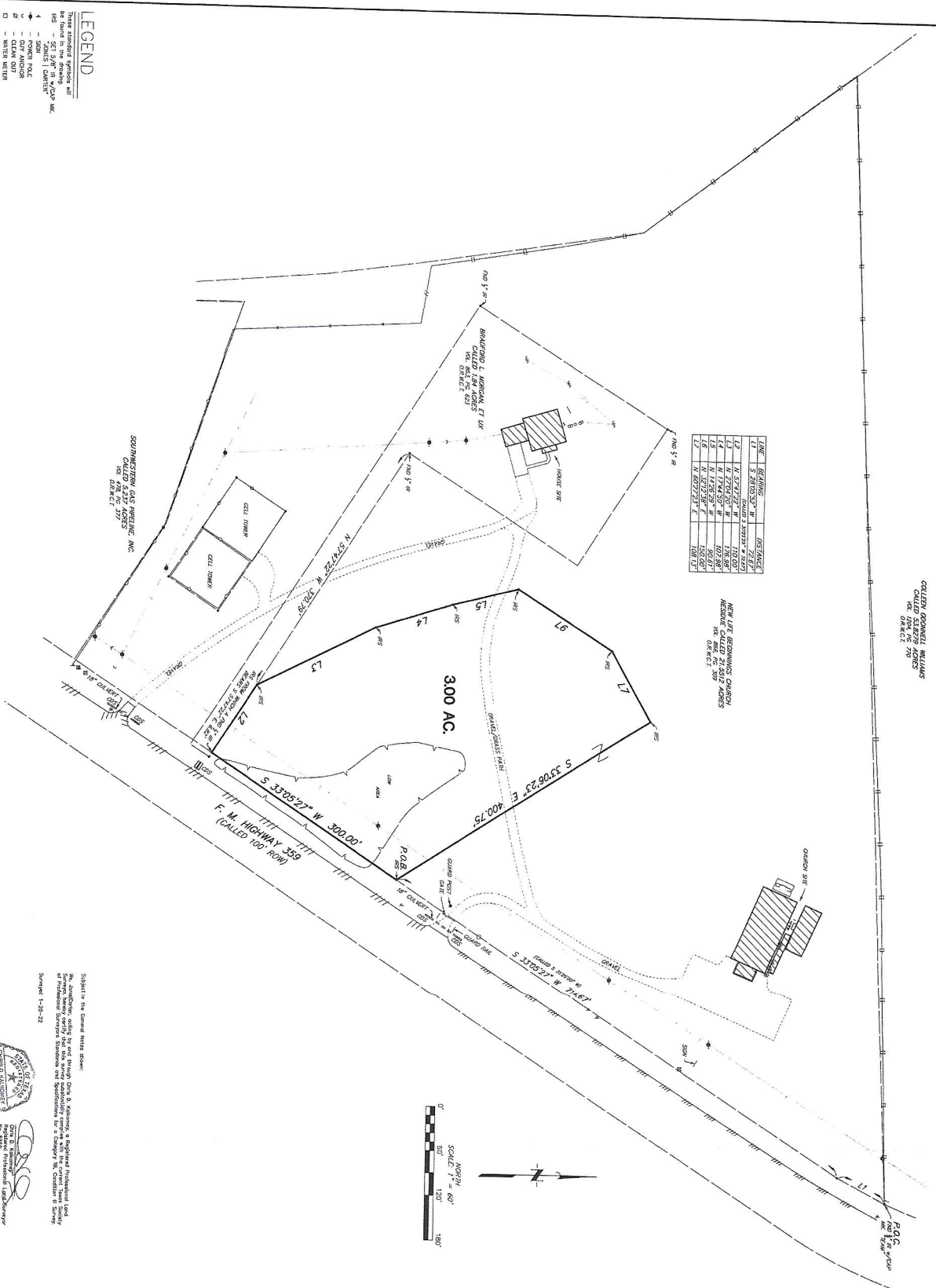


CRUISE HOMES: HOMES
CALLED KLEBER HOMES
DE. 01/14/17, P. 209

LINE	BEARING	DISTANCE
L1	S 20°15'57" W	100.00
L2	N 1°27'27" E	100.00
L3	N 7°27'45" W	100.00
L4	N 17°42'50" W	100.00
L5	N 27°12'18" W	100.00
L6	N 37°12'18" W	100.00
L7	N 45°27'27" E	100.00

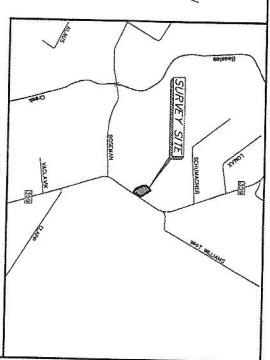
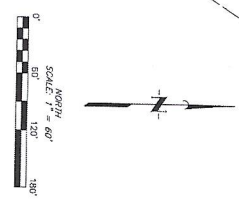
NEW LIFE BEGINNINGS CHURCH
RESIDUAL CALLED 21 000 AGRES
DE. 01/14/17, P. 209



LEGEND

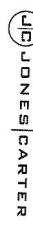
- These standard symbols are used on the drawing:
- 1 - "SUNDS I CARTER"
- 2 - POWER POLE
- 3 - CELL TOWER
- 4 - WATER UTILITY
- 5 - TELE. INFRASTRUCTURE
- 6 - RAINWATER POND
- 7 - FENCE
- 8 - FENCE
- 9 - FENCE
- 10 - FENCE
- 11 - FENCE
- 12 - FENCE
- 13 - FENCE
- 14 - FENCE
- 15 - FENCE
- 16 - FENCE
- 17 - FENCE
- 18 - FENCE
- 19 - FENCE
- 20 - FENCE

Subject to the General Mining Act:
An Advertisement calling for and through Clark B. Robinson, a Registered Professional Land Surveyor, to locate and survey the 300-acre tract of Industrial Surveyors Standard and Specifications for a change in the location of Survey 1-18-22



- GENERAL NOTES:**
- This tract was this date "X" of the Road Survey that was conducted by Clark B. Robinson, a Registered Professional Land Surveyor, No. 15823, State of Missouri, on or about the 12th day of January, 1922, for the purpose of subdividing the 300-acre tract into 100-acre lots. The 100-acre lots were not surveyed and do not exist as a matter of fact.
 - This Road Survey does not imply that the property or structures thereon are the property of Clark Robinson. Clark Robinson is not a party to this survey and does not have any interest in the property.
 - The 100-acre lots were surveyed by Clark B. Robinson, a Registered Professional Land Surveyor, No. 15823, State of Missouri, on or about the 12th day of January, 1922, for the purpose of subdividing the 300-acre tract into 100-acre lots. The 100-acre lots were not surveyed and do not exist as a matter of fact.
 - The 100-acre lots were surveyed by Clark B. Robinson, a Registered Professional Land Surveyor, No. 15823, State of Missouri, on or about the 12th day of January, 1922, for the purpose of subdividing the 300-acre tract into 100-acre lots. The 100-acre lots were not surveyed and do not exist as a matter of fact.
 - The 100-acre lots were surveyed by Clark B. Robinson, a Registered Professional Land Surveyor, No. 15823, State of Missouri, on or about the 12th day of January, 1922, for the purpose of subdividing the 300-acre tract into 100-acre lots. The 100-acre lots were not surveyed and do not exist as a matter of fact.
 - The 100-acre lots were surveyed by Clark B. Robinson, a Registered Professional Land Surveyor, No. 15823, State of Missouri, on or about the 12th day of January, 1922, for the purpose of subdividing the 300-acre tract into 100-acre lots. The 100-acre lots were not surveyed and do not exist as a matter of fact.
 - The 100-acre lots were surveyed by Clark B. Robinson, a Registered Professional Land Surveyor, No. 15823, State of Missouri, on or about the 12th day of January, 1922, for the purpose of subdividing the 300-acre tract into 100-acre lots. The 100-acre lots were not surveyed and do not exist as a matter of fact.
 - The 100-acre lots were surveyed by Clark B. Robinson, a Registered Professional Land Surveyor, No. 15823, State of Missouri, on or about the 12th day of January, 1922, for the purpose of subdividing the 300-acre tract into 100-acre lots. The 100-acre lots were not surveyed and do not exist as a matter of fact.
 - The 100-acre lots were surveyed by Clark B. Robinson, a Registered Professional Land Surveyor, No. 15823, State of Missouri, on or about the 12th day of January, 1922, for the purpose of subdividing the 300-acre tract into 100-acre lots. The 100-acre lots were not surveyed and do not exist as a matter of fact.
 - The 100-acre lots were surveyed by Clark B. Robinson, a Registered Professional Land Surveyor, No. 15823, State of Missouri, on or about the 12th day of January, 1922, for the purpose of subdividing the 300-acre tract into 100-acre lots. The 100-acre lots were not surveyed and do not exist as a matter of fact.

STEPHEN MILLER SURVEY ABSTRACT 218
OF
300 ACRES
JANUARY 22, 1922



Survey No. 15823, State of Missouri, on or about the 12th day of January, 1922, for the purpose of subdividing the 300-acre tract into 100-acre lots. The 100-acre lots were not surveyed and do not exist as a matter of fact.