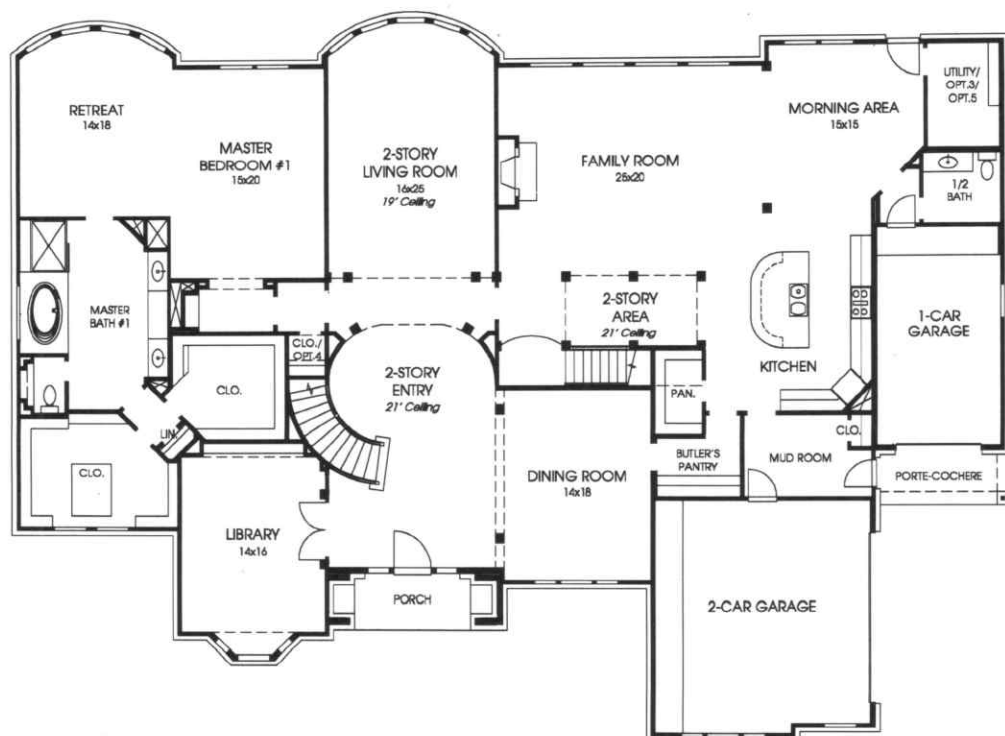


DESIGNS

Plan 7698W

This home contains approximately 7,698 square feet and includes five bedrooms, four bathrooms and two half baths.

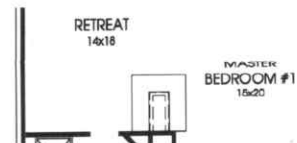


Note: The options shown on this brochure are available at an additional cost.

This floor plan has a 10-foot plate on the first floor.

Not included: inside keyed deadbolt locks, refrigerators, furnishings, drapery, plants, decorator items and all other personal property being used in model homes. Builder reserves the right to make changes in the plans and specifications, and to substitute material of similar quality. Room dimensions indicate approximate inside area measurements.
08/28/2008 - Perry Homes (CL&CL-W)

OPTION 1



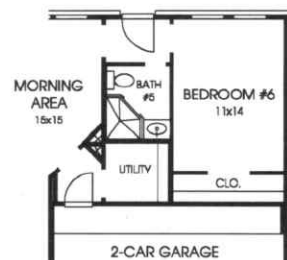
This floor plan has the option for a fireplace in the master bedroom.

OPTION 2



This floor plan has the option for a theatre room in lieu of the media room.

OPTION 3



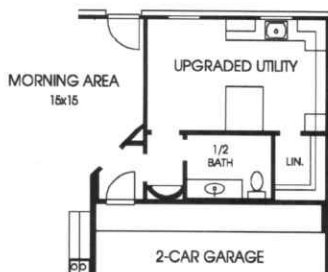
This floor plan has the option to add a sixth bedroom and fifth bath in lieu of the half bath; relocates the utility and adds an additional garage bay.
Note: This option adds 182 square feet to the floor plan.

OPTION 4



This floor plan has the option for an additional half bath in lieu of the first floor coat closet.

OPTION 5



This floor plan has the option for an upgraded utility and an additional garage bay.
Note: This option adds 182 square feet to the floor plan.

PERRY HOMES

