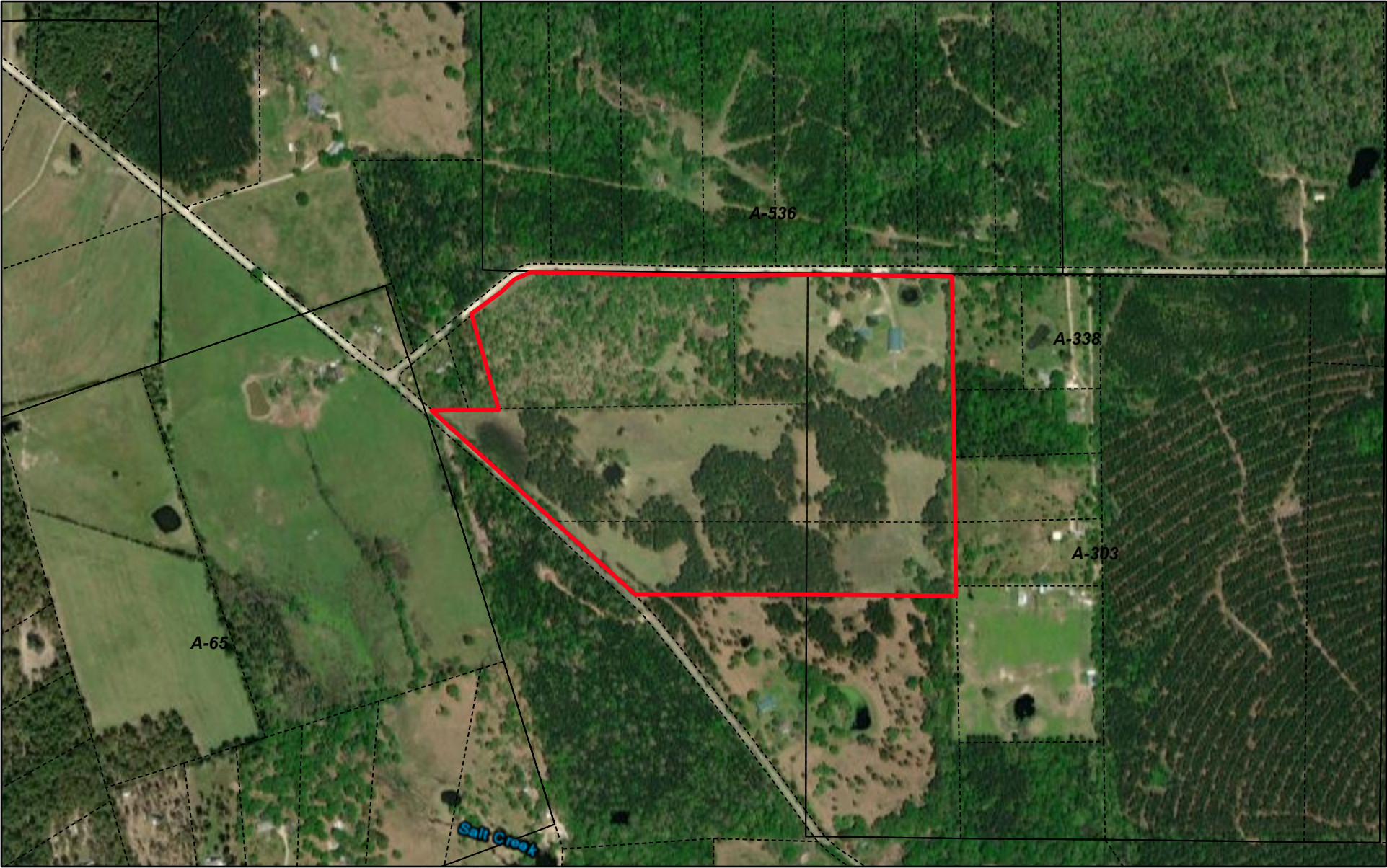

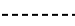
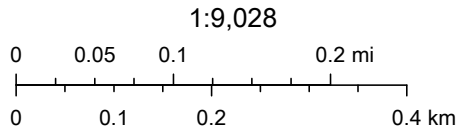


Walker CAD Web Map



8/10/2021, 10:44:17 AM

-  Abstracts
-  Lot Lines



Esri, HERE, Garmin, iPC, Maxar

Walker County Appraisal District, BIS Consulting - www.bisconsulting.com

Disclaimer: This product is for informational purposes only and has not been prepared for or be suitable for legal, engineering, or surveying purposes. It does not represent an on-the-ground survey and represents only the approximate relative location of boundaries.