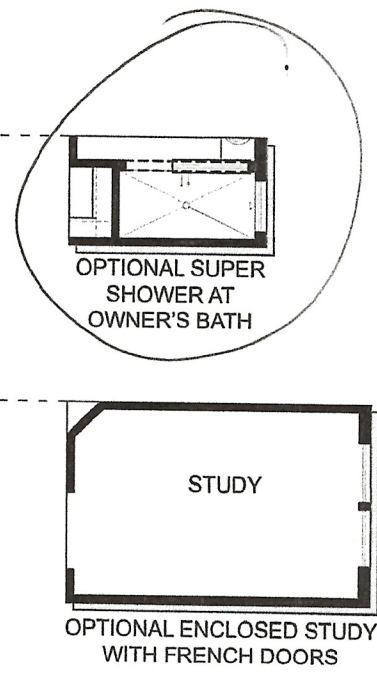
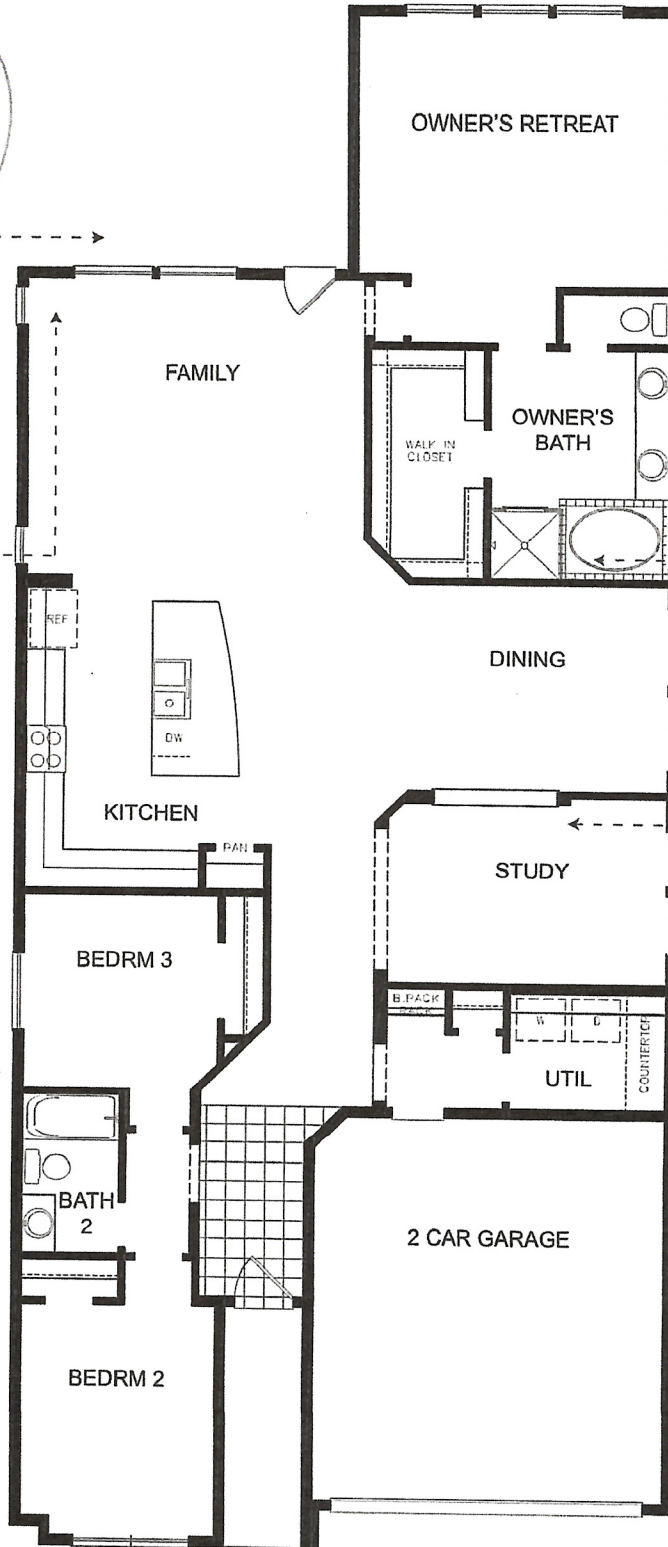
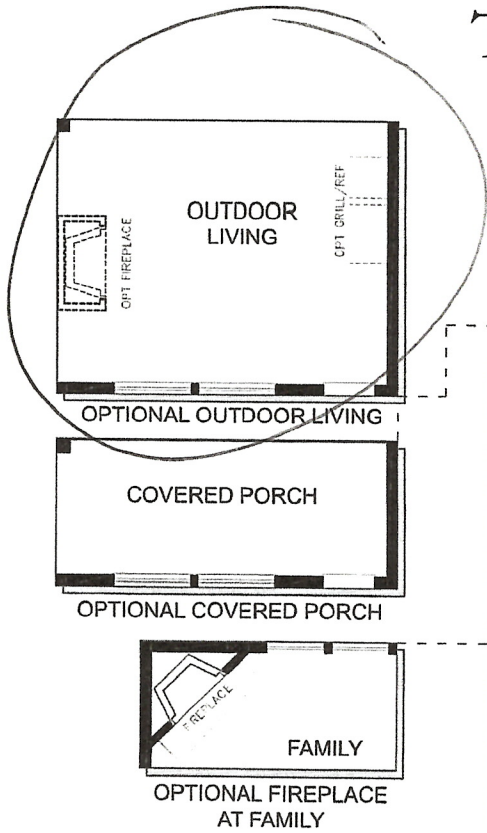


✓

FLOOR PLAN OPTIONS THE DUNLAP



KS

6157_HOU_1424



2/9/2018



See a David Weekley Homes Sales Consultant for details. Prices, plans, dimensions, features, specifications, materials and availability of homes or communities are subject to change without notice or obligation. Illustrations are artist's depictions only and may differ from completed improvements. Copyright © 2017 David Weekley Homes - All Rights Reserved. Houston, TX (ALLO85848)

DavidWeekleyHomes.com

FACTS & FEATURES
PEACE OF MIND

EXTERIOR SPECIALTIES

Facade (per elevation)

- Custom exterior color program and *Sherwin Williams* custom paint program
- American-made, clay brick (per plan)
- Custom Stone program (per plan)
- *James Hardie* siding and trim
- Composition Architectural Dimensional Shingles

Front Amenities

- Mahogany front door (solid or with glass insert)
- *Kwikset* front door handle set
- *Kwikset* exterior deadbolts with Smart Key technology
- *Teiber* LED doorbell
- *Wayne Dalton* insulated garage door
- *Liftmaster* 1/2 hp garage door opener (per door)
- *Liftmaster* wireless garage door exterior keypad
- *Kichler* coach lights
- Home gutter system (per community)
- Custom plant and tree program (per developer)

INTERIOR SPECIALTIES

Trim, Doors & Hardware

- Oversized 5 1/4" baseboards and 3 1/2" casing throughout home
- Raised panel smooth doors
- *Kwikset* door hardware
- Privacy locks on owner's retreat and all baths

Wiring and Electrical

- Structured wiring home run panel
- Custom structured wiring package (per community)
- Combination smoke and carbon monoxide detectors
- *Eaton/Cutler Hammer* or Square D electrical load center and surge protector
- 1/2 hot outlet at family and owner's retreat (for lamps)
- Dimmer switch at dining fixture
- Childproof electrical outlets
- Arc-Fault outlets
- Blocked and wired for ceiling fan in family and all bedrooms

Lighting & Ceiling Fans

- *Kichler* light package
- *Kichler* vanity light fixtures
- *Kichler* ceiling mount fixtures
- Energy Star rated ceiling fan in family and owner's retreat
- Energy Star rated LED lighting (per plan)

Flooring

- *Shaw* 100% BCF, PET Textured Saxony carpet over 3/8", 5 lb. pad
- Tiled entry, kitchen/breakfast, utility and all baths

KITCHEN

- 42" Wood upper cabinets
 - crown moulding
 - concealed hinges
 - multiple stains to choose from
- Frigidaire stainless steel appliance package
- 3 cm granite countertops
 - multiple colors to choose from
- Tiled backsplash
- Stainless steel undermount sink
- *Moen Camerist* faucet with side sprayer
- Air gap (per municipality)

Additional Connections

- Gas line to kitchen and utility
- *Insinkerator* 1/3 hp disposal
- Water line to refrigerator (refrigerator not included)

BATHS

Owner's Bath

- Wood base cabinets
 - multiple stains to choose from
- Cultured marble vanity tops with oversized built-in sinks
- *Moen Eva* centerset faucets and tub/shower fixtures
- *Moen Mason* towel bar and paper holder
- Framed mirror
- Tiled tub and shower surround
- Tiled shower floor (per plan)
- Semi-frameless shower enclosure (includes grout guard)
- *Royal* soaker tub
- *Gerber* elongated commode

Powder Bath (per plan)

- *Gerber* pedestal vanity sink
- *Moen Eva* centerset faucet
- *Moen Mason* towel bar and paper holder
- Framed mirror
- *Gerber* elongated commode

Secondary Bath(s)

- Wood base cabinets
 - multiple stains to choose from
- Cultured marble vanity top(s) with oversized built-in sink(s)
- *Moen Eva* centerset faucet(s) and shower fixture
- *Moen Mason* towel bar and paper holder
- Mirror with polished edges
- Tiled shower surround
- *Sterling Performa* tub
- *Gerber* elongated commode

David Weekley Homes

KS

