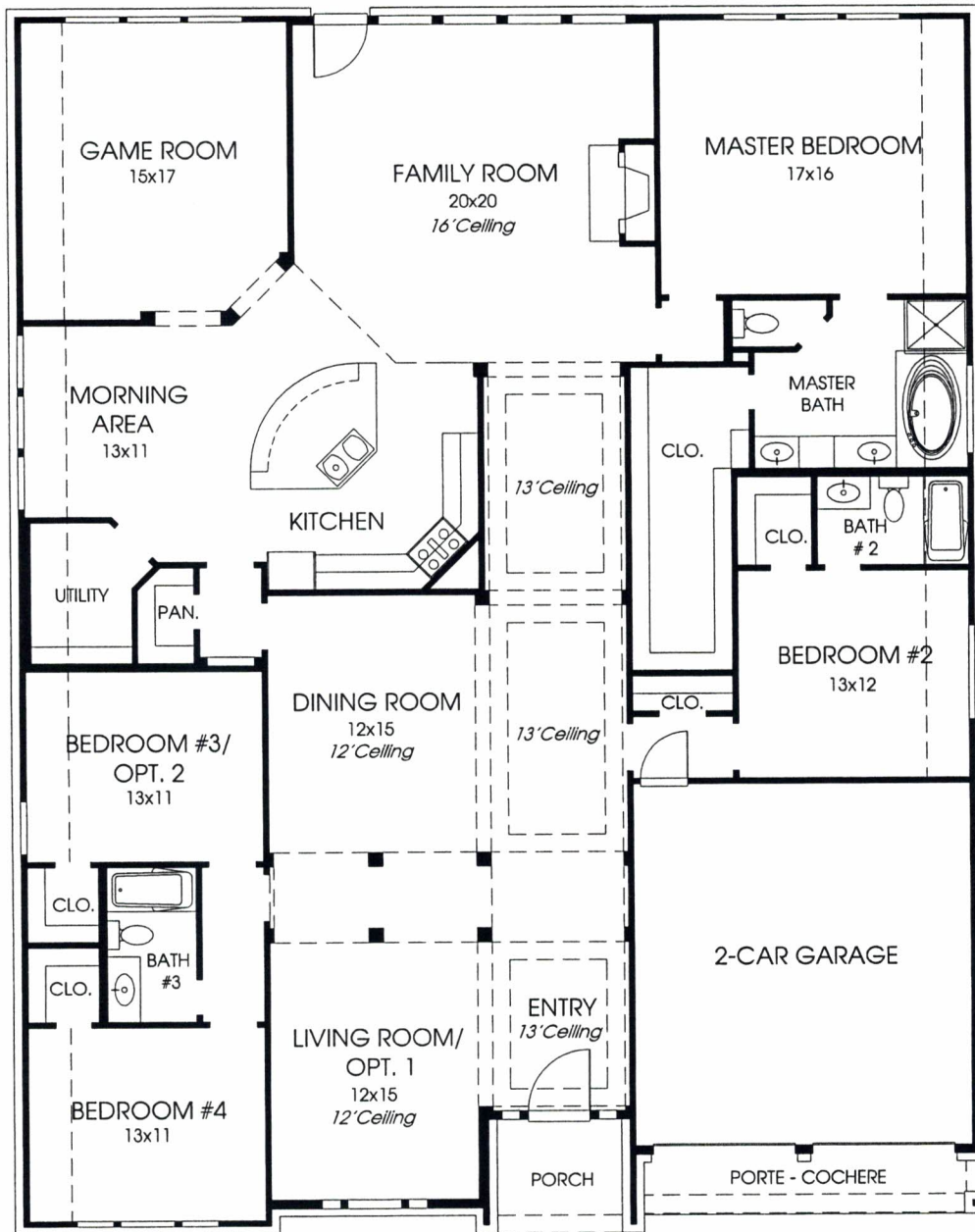


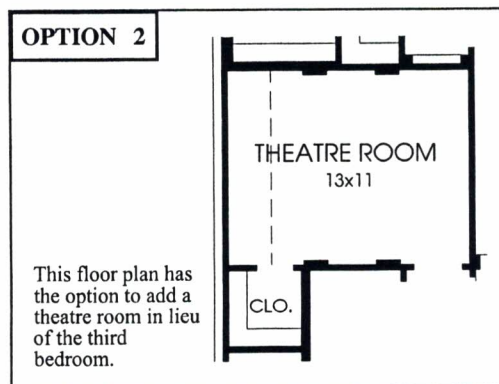
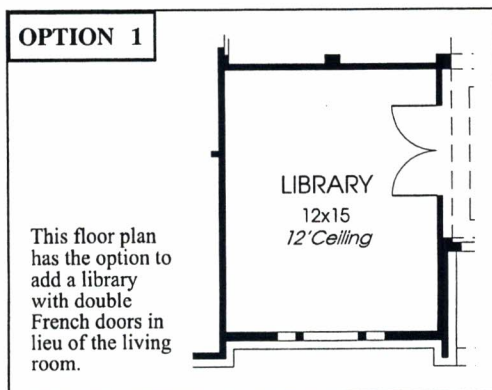
# DESIGNS

## Plan 3223W

This home contains approximately 3,223 square feet and includes four bedrooms and three baths.



Note: The options shown on this brochure are available at an additional cost.

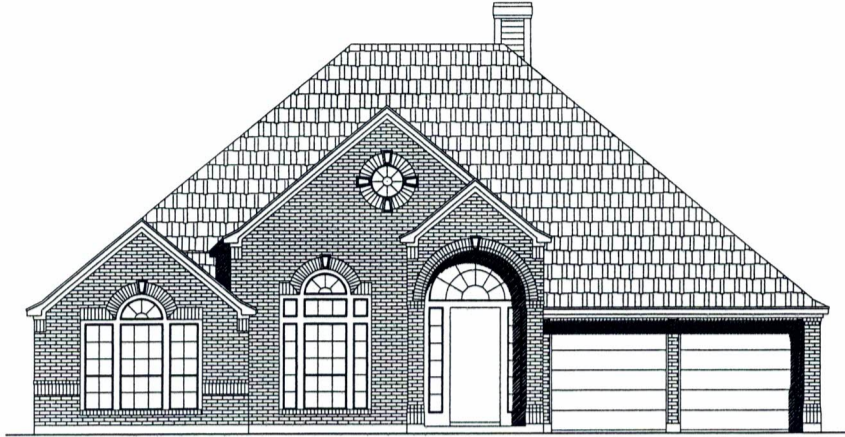


Not included: inside keyed deadbolt locks, refrigerators, furnishings, drapery, plants, decorator items and all other personal property being used in model homes. Builder reserves the right to make changes in the plans and specifications, and to substitute material of similar quality. Room dimensions indicate approximate inside area measurements.  
02/05/2008 - Perry Homes (CL&CL-W)

# PERRY HOMES



Some of the elevations shown may not be available in all communities.

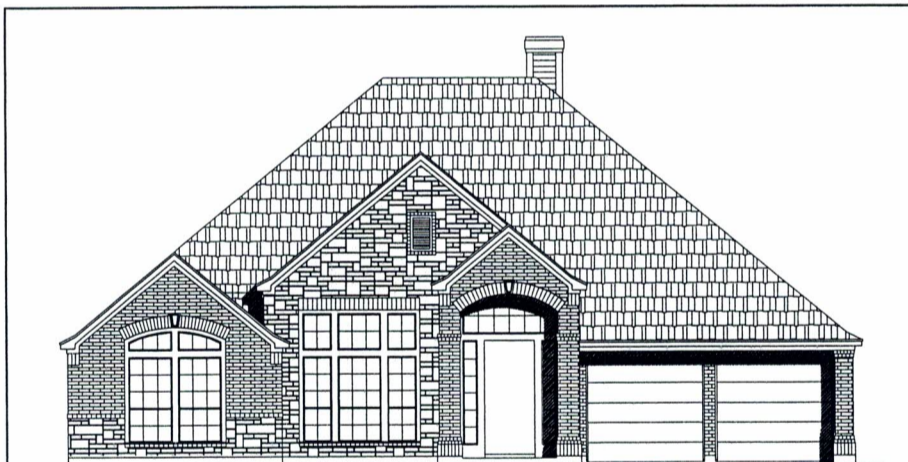


**PLAN 3223W E-1**



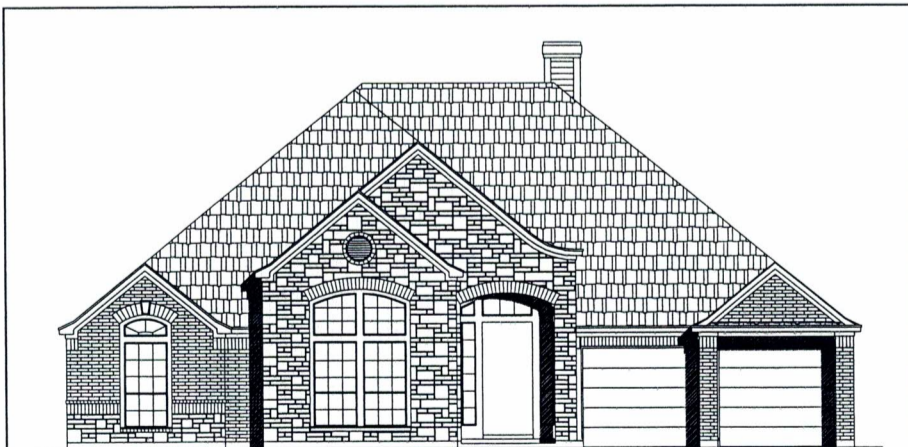
**PLAN 3223W E-2**

Note: This elevation deletes 18 square feet from the floor plan.



**PLAN 3223W E-50**

**OPTIONAL ELEVATION**



**PLAN 3223W E-51**

**OPTIONAL ELEVATION**

Note: This elevation deletes 9 square feet from the floor plan.