



*For
Sale*

RICE MILITARY TOWNHOME SHINES WITH TRADITIONAL PLAN, FLATTERING FEATURES

Timeless design and an inviting floorplan create a comfortable, three bedroom/two-and-a-half bath townhome in Rice Military. Robust, flowing downstairs living and common spaces and a sizable upstairs game room compliment togetherness. Granite, wide-plank wood flooring and moldings add appeal.

5338 NOLDA STREET | HOUSTON, TEXAS 77007

\$455,000



GRACIOUS INNER LOOP PROPERTY OFFERS HIGH-STYLE, CONVENIENCE, ABUNDANT SPACES

A welcoming, wide open kitchen and breakfast area celebrate expansive granite counters and an island with seating space; stainless steel Bosch and LG appliances; deep, double reach-in pantry packed with shelving and door racks; rich wood cabinetry with undermount lighting and adjustable shelves; luminous four-bay window niche. Owners' suite presents gargantuan bedroom with raised ceiling, decorative molding; two vanities, each sporting

granite; large, jetted soaking tub; glass enclosed shower with decorative tile; vast walk-in closet. Gas log fireplace with pillared mantle and tiled surround and integrated surround sound in living area. Chair rails and paneled inner doors. RH dining/kitchen lighting. Two-inch slatted blinds. Cheery landscaping. Enclosed, sodded backyard with extra tall privacy fence. Private double-wide drive with adjacent waste bin storage pad.

FEATURES AND UPGRADES

SIGNATURE FEATURES

Inviting Floor Plan With Flowing Downstairs Public Spaces and Upstairs Game Room and Bedrooms

Enclosed, Sodded Back Yard With Cheerful Landscaping, Edison-Bulb String Lights, and Extra Tall Privacy Fencing

Private Double-Wide Driveway With Eco-Friendly Permeable Surface Pavers and Space for Four Vehicles

Gas Log Fireplace With Mantle and Title Surround

KITCHEN & DINING

RH Dining and Kitchen Light Fixtures

Island With Light Granite Countertops, Under-Mount Dual-Bay Sink With Gooseneck Pull-Down Sprayer, and Space for Barstools

Raised Panel Cabinets in Rich Wood Tones With Adjustable Shelving, and Under Cabinet Lighting

Stainless Steel Appliance Suite Including Bosch Four-Burner Natural Gas Range, Vent Hood, Dishwasher, and Oven and LG Microwave

Abundant Pantry Storage With Door Racks

OWNERS' SUITE

Generously Sized Primary Bedroom With Ample Space for King-Sized Bed, Dressers, and Seating Area

Raised Ceiling With Decorative Molding and Ceiling Fan

Double French Doors Leading to Bath

Dual Light Granite Countertops With Under-Mount Sinks

Large, Jetted Soaking Tub

Glass Shower Enclosure With Decorative Tile Inset and Shampoo Ledge

Oversized Walk in Closet

Separate Water Closet

TIMELESS FINISHES

+ SMART DESIGN

Wide-Plank Wood Floors With Dark Finish in Living Areas, Owner's Suite, Game Room, and Stairway

Crown Molding, Wainscoting, and Decorative Moldings Add Timeless Elegance Throughout

Traditional Matte Black Wrought Iron Stairway Railing

Paneled Interior Doors

Integrated Surround Sound in Living Room

TV Mount Ready Living, Game Room, and Primary Bedroom With Wiring Channels in Place

Ceiling Fans in Living Room, Game Room and all Bedrooms

Secondary Bedrooms With Neutral Carpeting, and Walk-in Closets With Shelving

Framed Bathroom Mirrors

Two Inch Indoor Slatted Blinds

Discretely Positioned Half Bath

Sizable Ground Floor Coat Closet

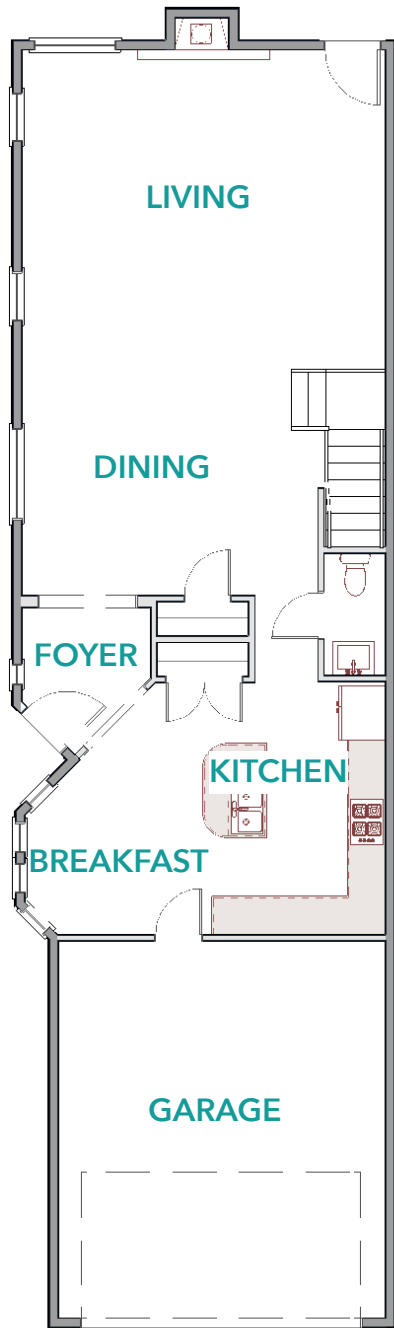
Fully Guttered

Low-E Double Pane Insulated Windows

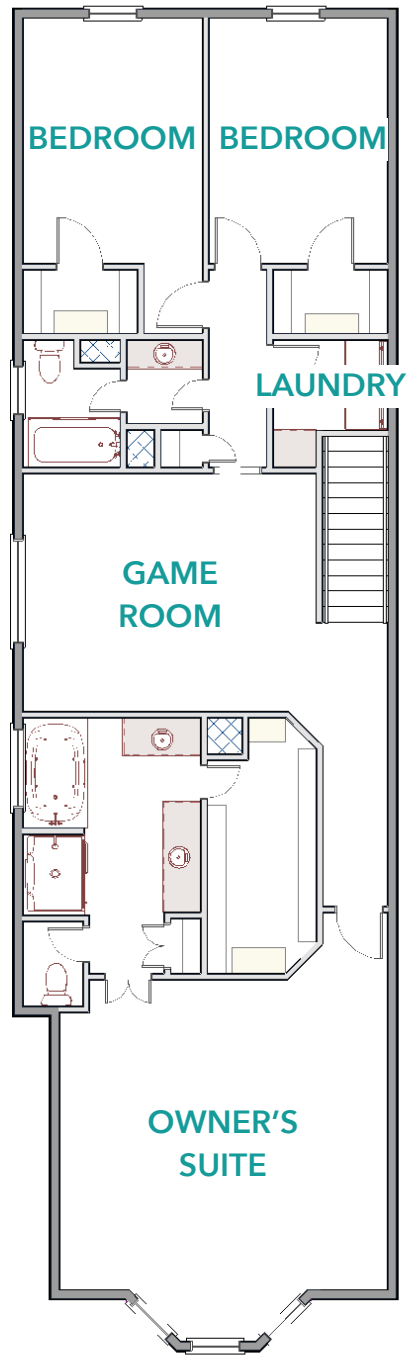
Convenient Off-Drive Waste Bin Storage

FLOOR PLAN

The THOUGHTFULLY DESIGNED residence at 5338 NOLDA STREET boasts a floor plan BUILT FOR COMMUNAL GATHERINGS that also has plenty of quiet places to TUCK AWAY FOR PRIVATE TIME.



FIRST FLOOR



SECOND FLOOR

Floor plan provided for marketing purposes only. Buyer should verify dimensions and details.

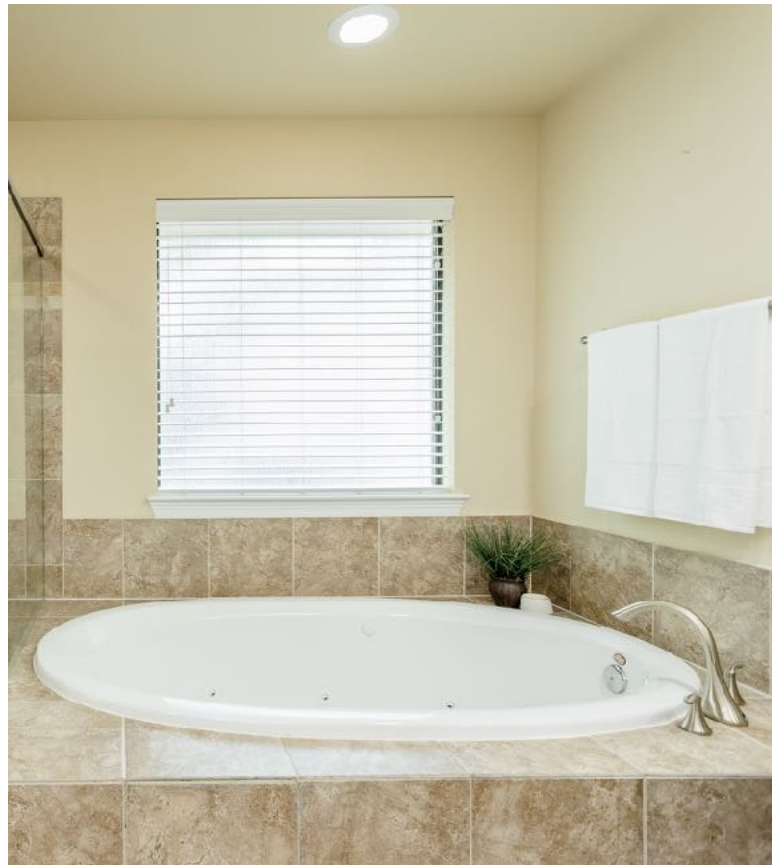
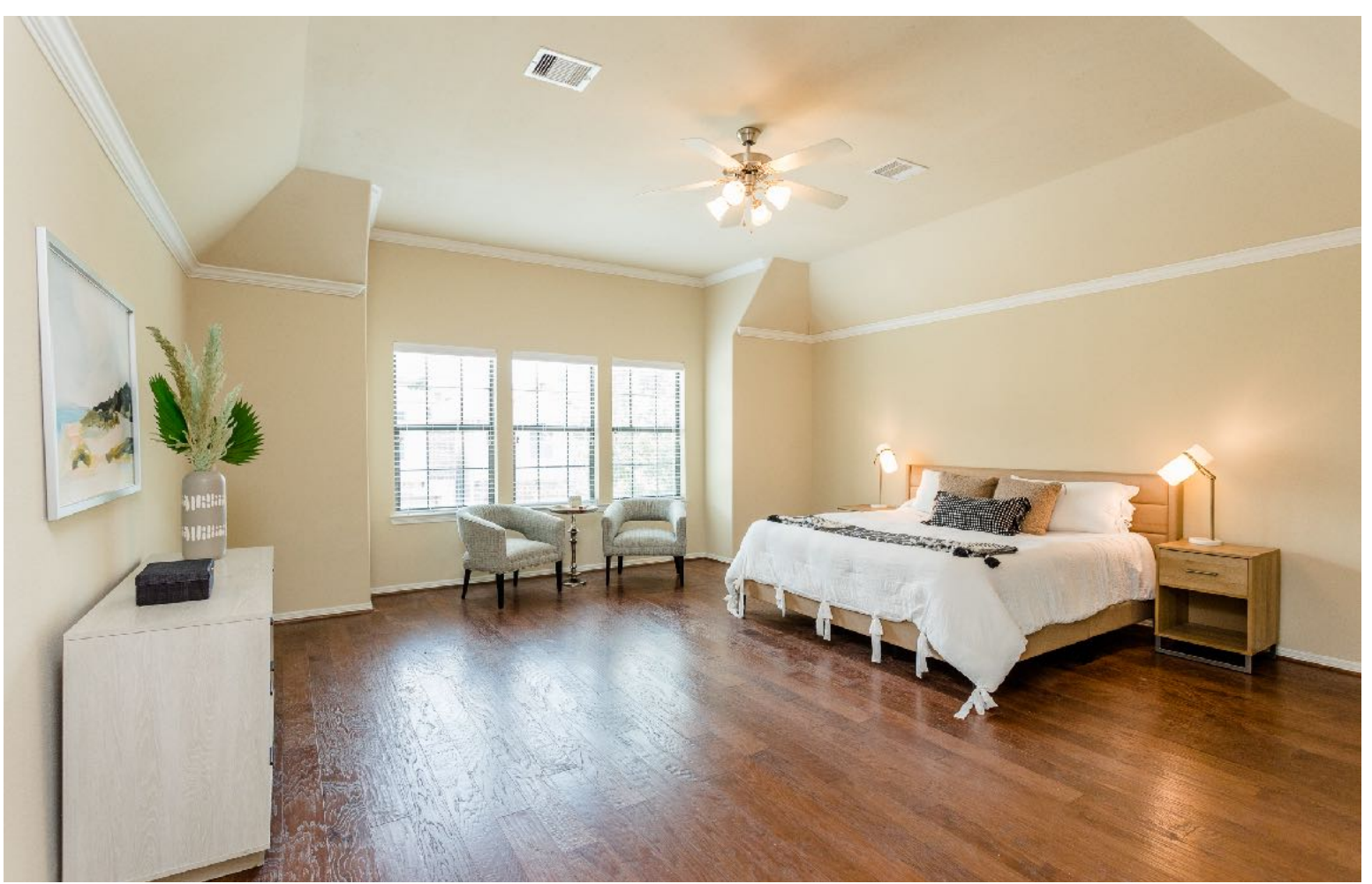


Non-Realty Items

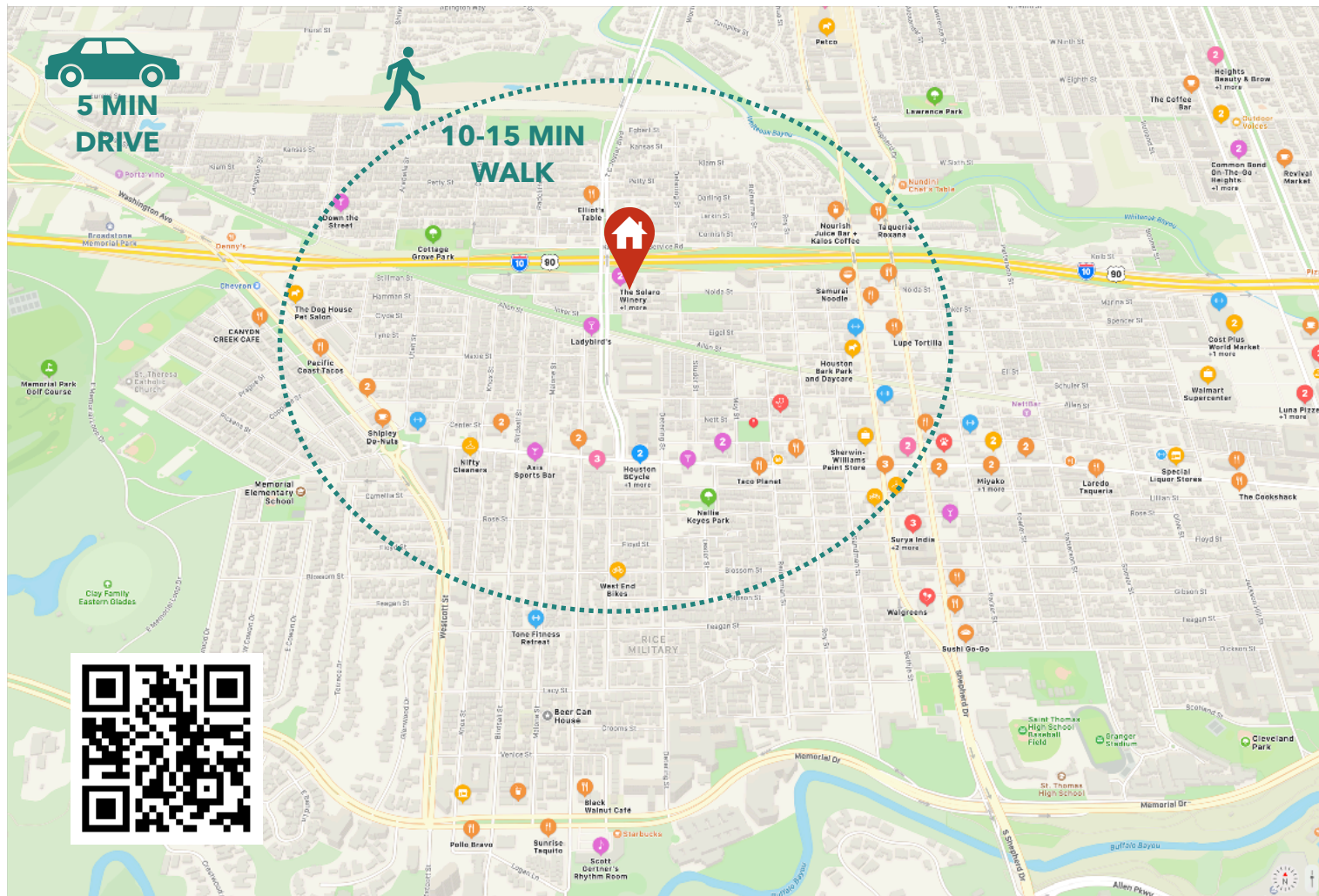
With an accepted offer, the following non-realty item will convey with the sale of the property:

- LG Stainless Steel Super-Capacity 3 Door French Door Refrigerator with Smart Cooling Plus Technology
- Whirlpool Cabrio Platinum Clothes Dryer
- Whirlpool Cabrio Platinum Clothes Washer





NEIGHBORHOOD GUIDE



10-15 MIN WALK



LADYBIRD'S
5519 Allen St



COTTAGE GROVE PARK
2100 Arabelle St



ELLIOT'S TABLE
465 T C Jester Blvd



EL TIEMPO CANTINA
5602 Washington Ave



CVS PHARMACY
5401 Washington Ave



SOLARA WINERY
330 T C Jester Blvd



10 MIN RIDE



CANYON CREEK CAFE
6603 Westcott St



MEMORIAL PARK
6501 Memorial Dr



BAYOU BEND COLLECTION
6003 Memorial Drive



LA FITNESS
195 Yale St



SOMA SUSHI
4820 Washington Ave



FM KITCHEN & BAR
1112 Shepherd Dr



5 - 10 MIN DRIVE



H-E-B
3663 Washington Ave



WALMART
111 Yale St



KROGER
1035 N Shepherd Dr



TARGET
2580 Shearn St



CITY CENTRE
I-10 & Sam Houston Tolway S



DOWNTOWN HOUSTON

Features

3 

2.5 

2,546 SF 

Lot Size 2,787 SF

Area Rice Military

Property Type Single Family

Stories 2

Year Built 2015

HOA N/A

Fireplace Gas Log

Construction Cement Board

Style Traditional

Parking 2 Car Attached Garage
Private Driveway

Heating Central Gas

Cooling Central Electric

Foundation Slab

Nearby Parks Nellie Keyes, Memorial

School District Houston ISD

Elementary Memorial

Middle Hogg

High Lamar

MLS Number 93004767



Jennifer Vickers is an award-winning Realtor® specializing in inner loop residential properties. Recipient of the HAR "20 Under 40 Rising Stars in Real Estate" and 2019-2021 Texas Monthly Five Star Real Estate Awards, her detail oriented approach has helped Jennifer become a Top Producer since entering the real estate business in 2014. Contact Vickers Properties Group to assist with buying a home, selling or leasing a property, or marketing your next development.

Certifications:

- Master Certified Negotiation Expert
- Graduate, Real Estate Institute



Jennifer Vickers

REALTOR®

TREC LIC # 637294

CELL: 713-240-9671

JENNIFER@VICKERSPROPERTIES.COM

WWW.VICKERSPROPERTIES.COM



711 W 17TH STREET | HOUSTON, TX 77008



This is not intended to solicit a currently listed home. Information is deemed reliable, but not guaranteed.