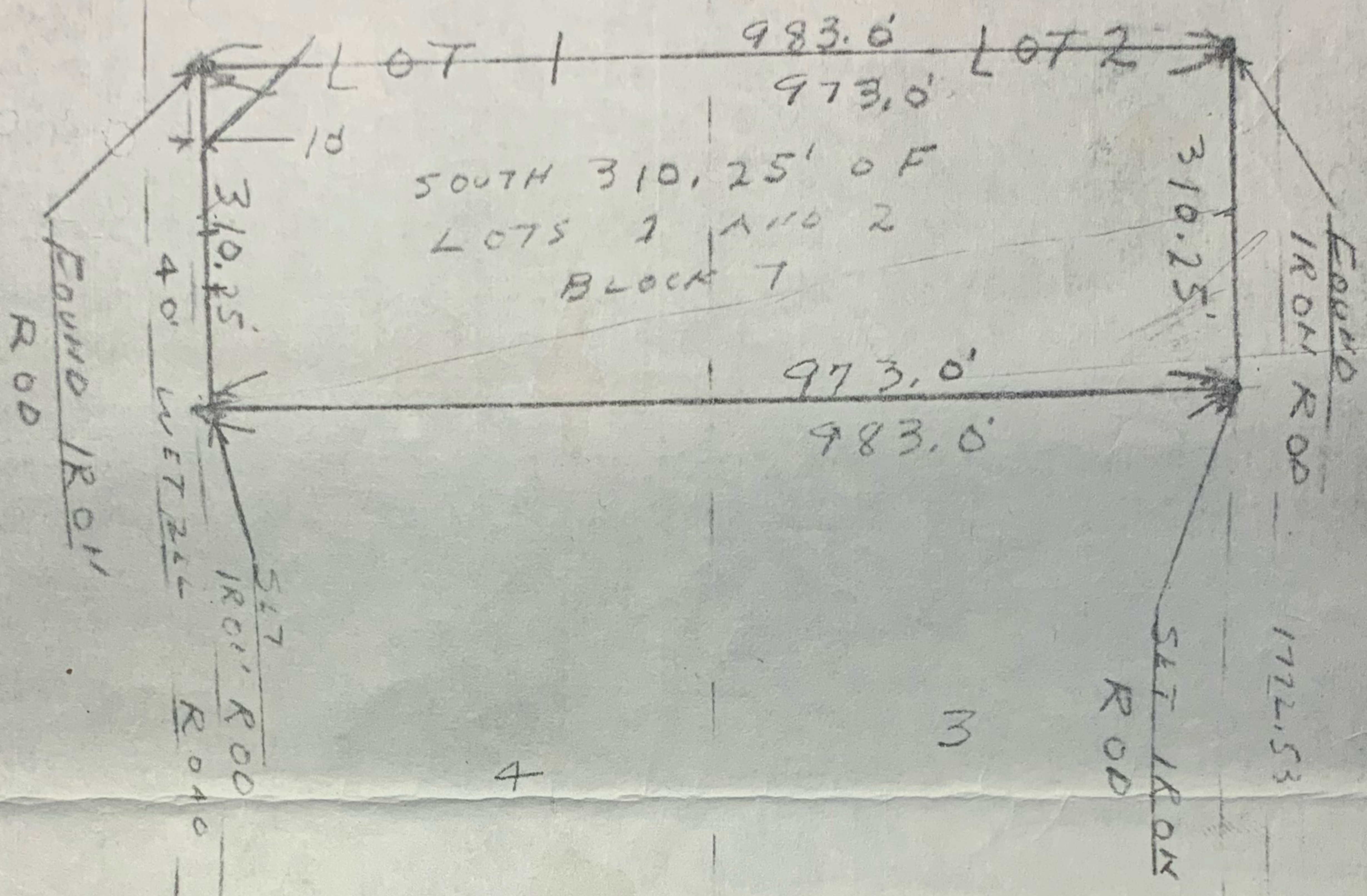


(*)

40' ROAD
983'

NOTE: PIPE LINES AND EASEMENTS NOT SHOWN



SCALE: 1" = 200'

983'
40' ROAD

I hereby certify that the foregoing is a correct survey of the South 310.25 feet of Lots 1 and 2 in Block 7 of Beatty's Subdivision in the W. K. Wilson League in Galveston County, Texas, according to the map thereof recorded in Volume 113, Page 32, in the office of the County Clerk of Galveston County, Texas.



SEPT. 17, 1982

Harry W. McAninch