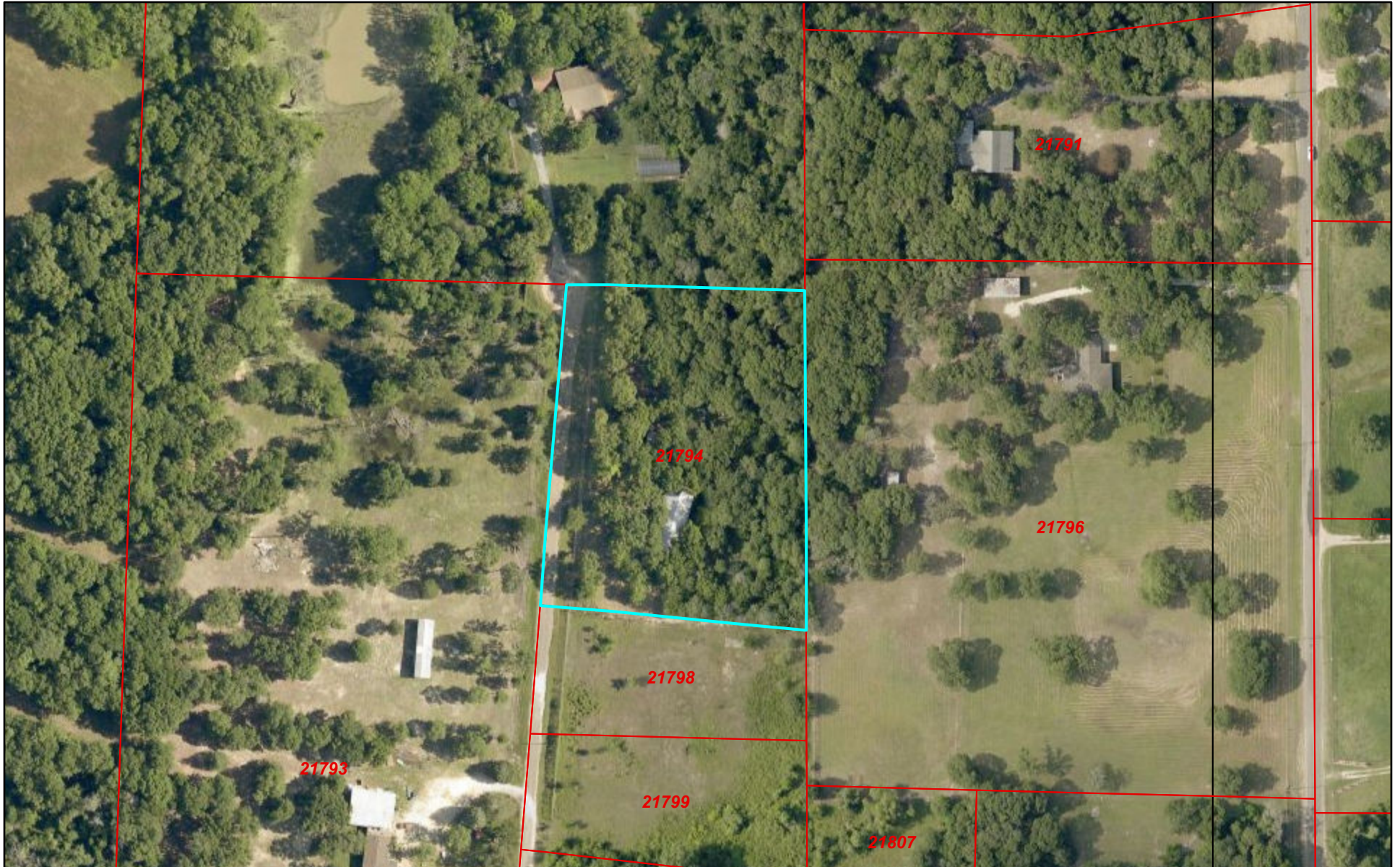
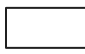


Freestone CAD Web Map

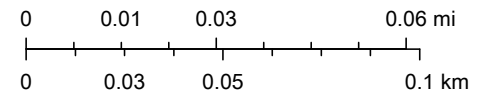


6/15/2021, 7:50:10 PM

 Parcels

 Abstracts

1:2,257



© OpenStreetMap (and) contributors, CC-BY-SA

Freestone County Appraisal District, BIS Consulting - www.bisconsulting.com

Disclaimer: This product is for informational purposes only and has not been prepared for or be suitable for legal, engineering, or surveying purposes. It does not represent an on-the-ground survey and represents only the approximate relative location of boundaries.