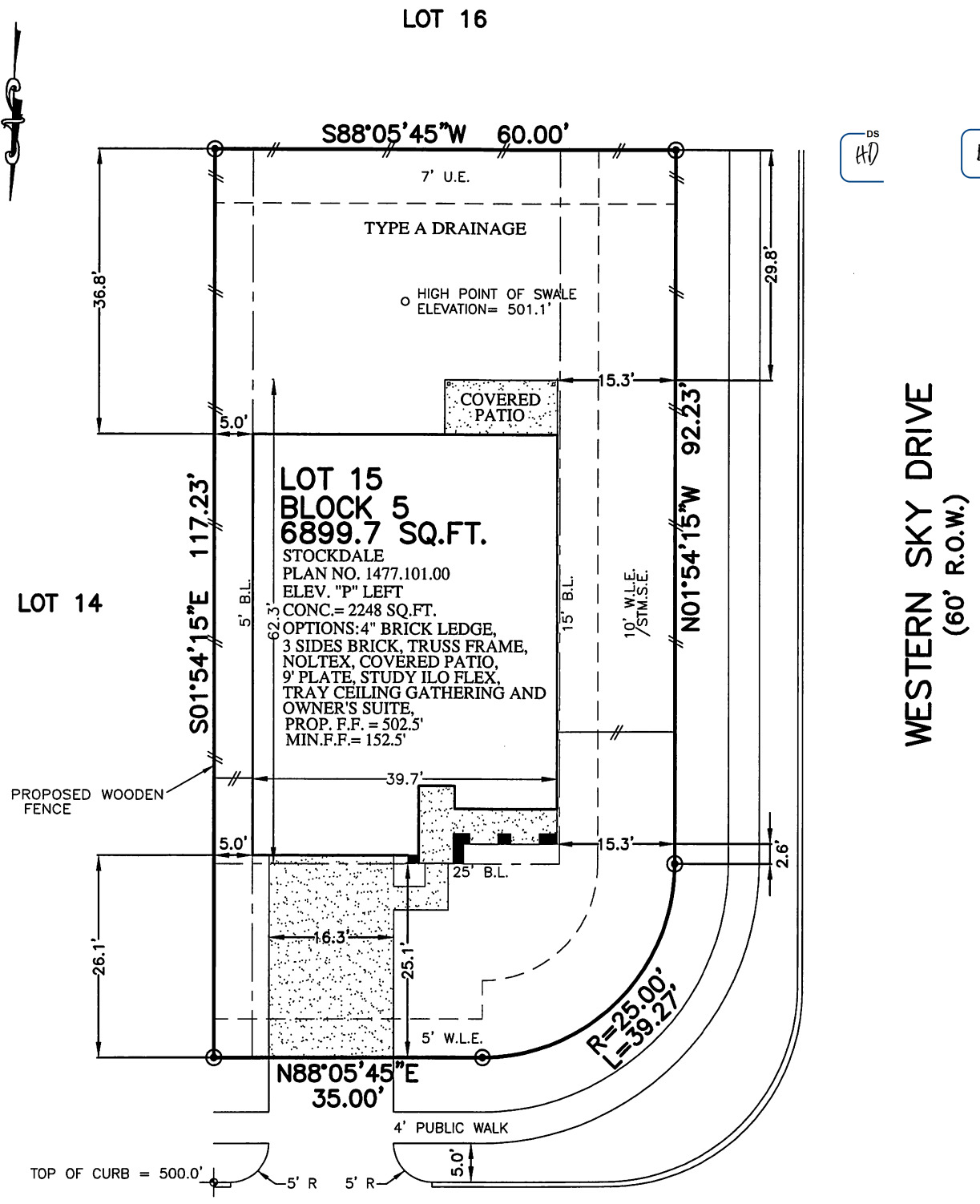


	FLATWORK		WROUGHT IRON FENCE		T.O.P. TOP OF PKWM		BUILDER GUIDELINES		ELECTRIC BOX		TELEPHONE PEDESTAL		PAD MOUNTED TRANSFORMER
	PROPERTY LINE		CHAIN LINK FENCE		F.F. FINISHED FLOOR		MAINTENANCE EASMENT		CABLE PEDESTAL		FIRE HYDRANT		GRATE DRAIN
	BUILDING LINE		OVERHEAD ELECTRIC		EXT. EXTENDED		R.O.W. RIGHT-OF-WAY		WATER METER		LIGHT POLE		GAS METER
	EASEMENT		B.L. BUILDING LINE		P.V.T. PRIVATE		S.T.R.E.E.T L.I.G.H.T E.A.S.E.M.E.N.T		UTILITY VAULT		MANHOLE		MANHOLE
			U.E. UTILITY EASEMENT		CONC. CONCRETE		E.L.E.C.T.R.I.C E.A.S.E.M.E.N.T		FND. BLDG. BUILDING		WATER VALVE		GUY ANCHOR
			W.L.E. WATER LINE EASEMENT		I.R. IRON ROD		S.S.E. SANITARY SEWER EASEMENT		A.E. AERIAL EASEMENT		PROPERTY CORNER		POWER POLE



LOT 15
BLOCK 5
6899.7 SQ.FT.
 STOCKDALE
 PLAN NO. 1477.101.00
 ELEV. "P" LEFT
 CONC. = 2248 SQ.FT.
 OPTIONS: 4" BRICK LEDGE,
 3 SIDES BRICK, TRUSS FRAME,
 NOLTEX, COVERED PATIO,
 9' PLATE, STUDY ILO FLEX,
 TRAY CEILING GATHERING AND
 OWNER'S SUITE,
 PROP. F.F. = 502.5'
 MIN. F.F. = 152.5'

DS
HD

DS
BD

WESTERN SKY DRIVE
 (60' R.O.W.)

30253 CREEKSIDE DRIVE
 (60' R.O.W.)

APPROX. LOT COVERAGE:	39.16%
FENCE (LIN. FT.)	236.59
FRONT SOD:	381 SQ. YD.
BACK SOD:	324 SQ. YD.
TOTAL SOD:	705 SQ. YD.
CONC. PATIO	0 SQ. FT.
PRIVATE WALK	30 SQ. FT.
PUBLIC WALK	658 SQ. FT.
DRIVEWAY	424 SQ. FT.
IN-TURN	271 SQ. FT.
TOTAL PAVING:	1383 SQ. FT.

- NOTES:
1. ALL BEARINGS SHOWN HEREON ARE BASED ON THE RECORDED PLAT.
 2. THIS PLOT PLAN WAS PREPARED WITHOUT BENEFIT OF A TITLE REPORT. THERE MAY BE EASEMENTS, BUILDING LINES & OTHER MATTERS OF RECORD NOT SHOWN HEREON. SURVEYOR OR ALLPOINTS SERVICES CORP. IS NOT LIABLE FOR ANY DAMAGES THAT MAY INCUR IN ANY EVENT THE BUILDER BUILDS ANY IMPROVEMENTS CLOSER THAN 5.0' OR WITHIN AN EASEMENT.
 3. DRAINAGE TYPE DETERMINED WITHOUT BENEFIT OF DRAINAGE PLANS.

PLOT PLAN
 SCALE: 1 = 20'

©2017, ALLPOINTS SERVICES CORP., ALL RIGHTS RESERVED

FOR: PULTE HOMES OF TEXAS
 ADDRESS:
 30253 CREEKSIDE DRIVE
 ALLPOINTS JOB #: PH134966
 G.F.: ARM

LOT 15, BLOCK 5,
WILLOW CREEK FARMS II, SECTION 2,
VOL. 1419, PG. 751, OFFICIAL RECORDS,
WALLER COUNTY, TEXAS



ISSUE DATE: 5/1/2017