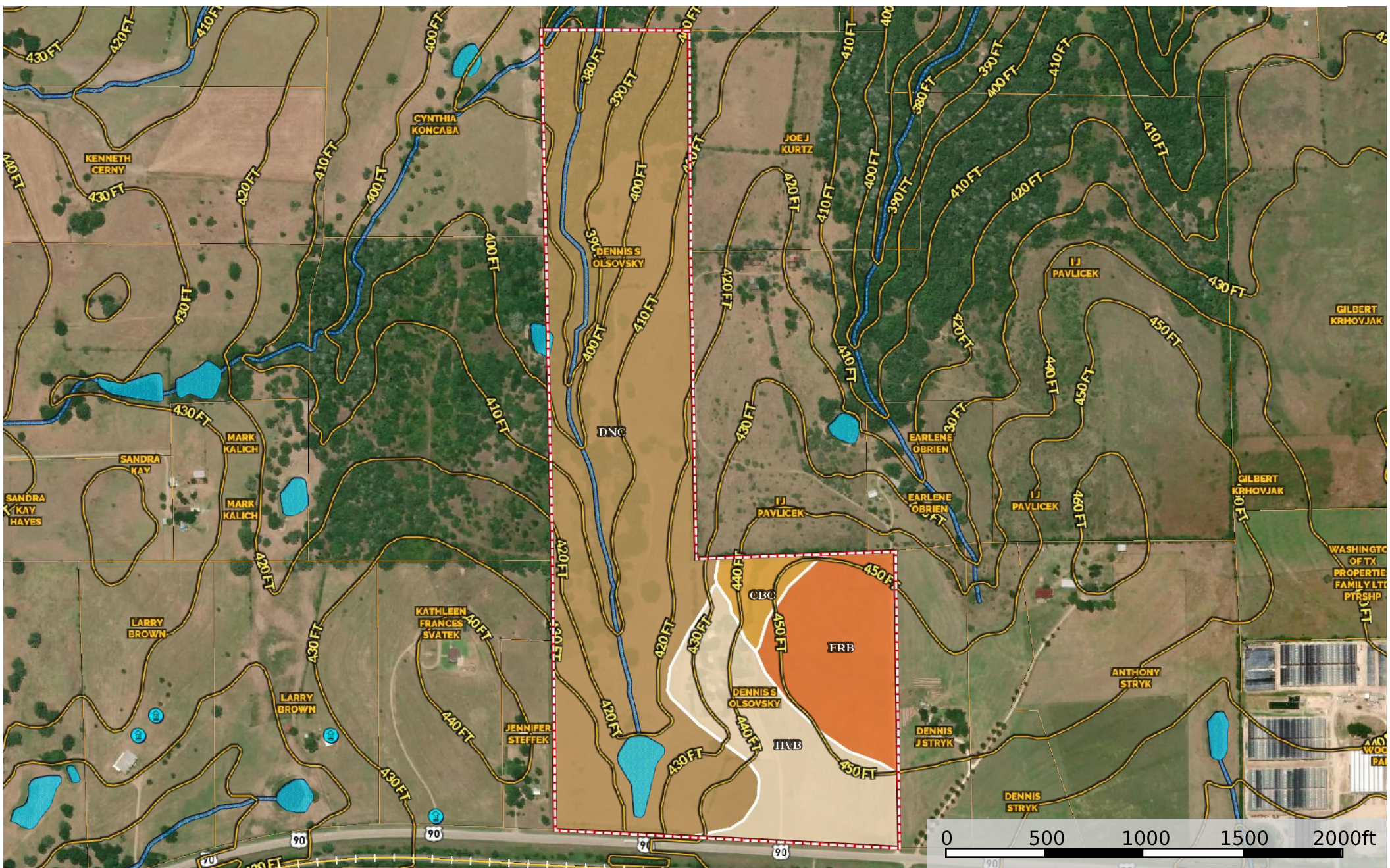


# 106 ac Hwy 90 flatonia

Texas, AC +/-



|             |                     |                     |                      |                      |                        |                |             |                      |             |            |           |             |       |
|-------------|---------------------|---------------------|----------------------|----------------------|------------------------|----------------|-------------|----------------------|-------------|------------|-----------|-------------|-------|
| Boundary    | 100 Year Floodplain | 500 Year Floodplain | Floodway             | Special              | Unmapped/ Not Included | Wetlands       | Riparian    | Stream, Intermittent | River/Creek | Water Body | Crude Oil | Natural Gas | Other |
| Water Wells | NOT AVAILABLE       | Voltage 0 - 99 KV   | Voltage 100 - 161 KV | Voltage 220 - 287 KV | Voltage 345 KV         | Voltage 500 KV | Substations |                      |             |            |           |             |       |

|  Boundary 101.1 ac

| SOIL CODE | SOIL DESCRIPTION                                     | ACRES | %     | CAP  |
|-----------|--|-------|-------|------|
| DnC       | Dubina loamy fine sand, 2 to 5 percent slopes        | 69.8  | 68.99 | 3e   |
| FrB       | Frelsburg clay, 1 to 3 percent slopes                | 12.9  | 12.74 | 3e   |
| HvB       | Hallettsville fine sandy loam, 1 to 3 percent slopes | 15.6  | 15.46 | 3s   |
| CbC       | Carbengle sandy clay loam, 3 to 5 percent slopes     | 2.8   | 2.81  | 4e   |
| TOTALS    |  | 101.1 | 100%  | 3.03 |

### Capability Legend

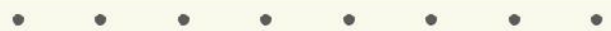
Increased Limitations and Hazards

Decreased Adaptability and Freedom of Choice Users

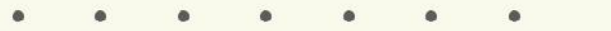
Land, Capability



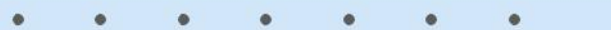
'Wild Life'



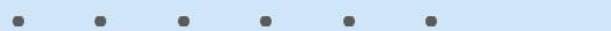
Forestry



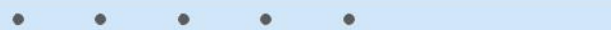
Limited



Moderate



Intense



Limited



Moderate



Intense



Very Intense



### Grazing Cultivation

(c) climatic limitations (e) susceptibility to erosion

(s) soil limitations within the rooting zone (w) excess of water