

APPROXIMATE AREAS:
 GARAGE= 433 SQ.FT.
 LIVING =3232 SQ.FT.

APPLIANCES INCLUDED:

- MICROWAVE
- GARBAGE DISPOSAL
- DISHWASHER

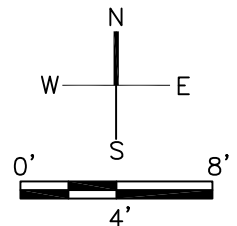
OTHER AMENITIES:

- GAS STOVE
- GAS WATER HEATER
- GAS & ELECTRIC DRYER HOOK-UP
- CONVENIENT TO SHOPPING

SCHOOL INFORMATION:

- HUMBLE ISD
- PARK LAKES ELEMENTARY
- HUMBLE JR HIGH SCHOOL
- SUMMER CREEK HIGH SCHOOL

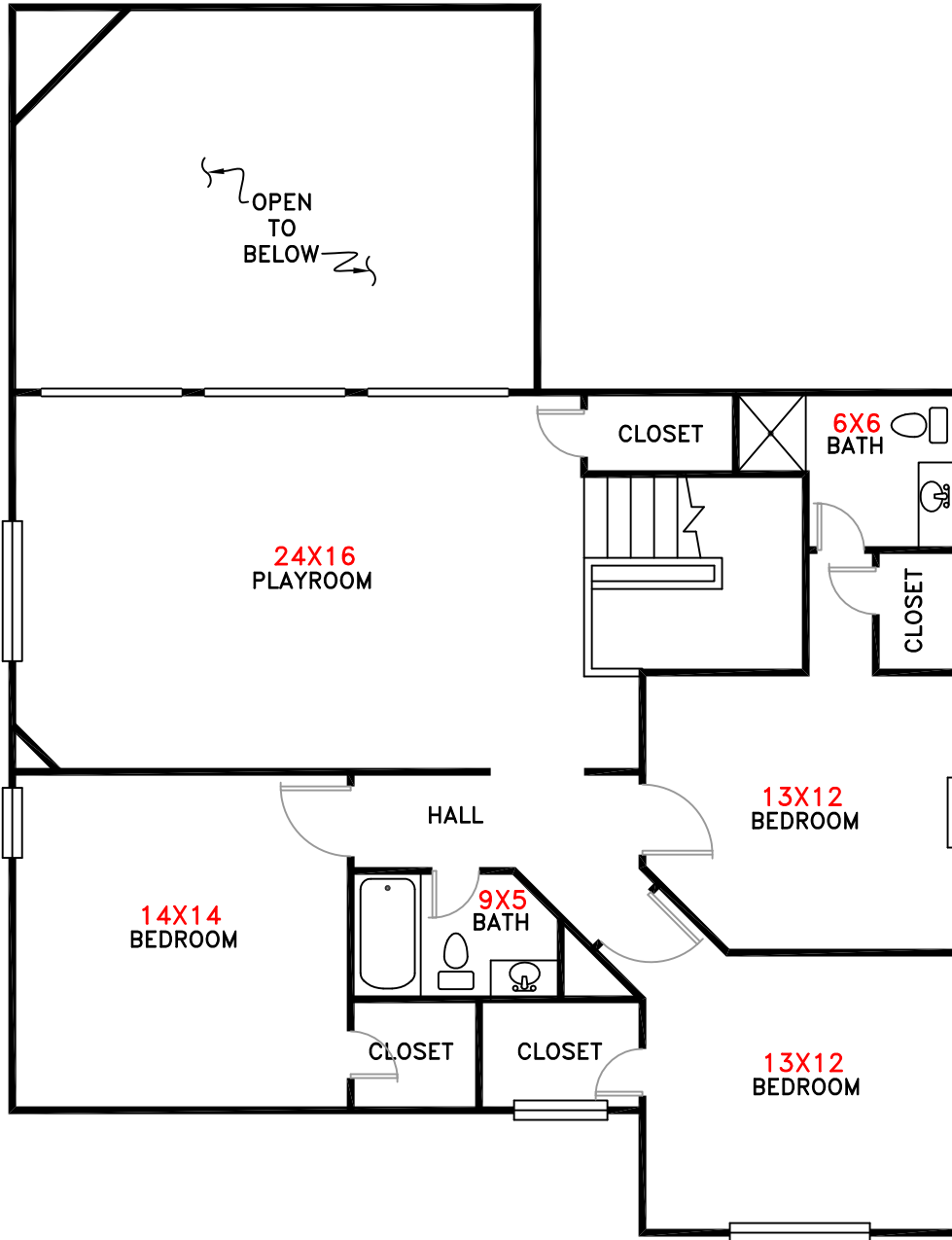
FIRST FLOOR-PLAN



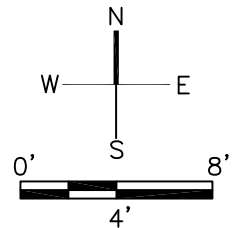
LOCATED IN THE CANYON GATE PARKS LAKE SUBDIVISION (KEY MAP 376S)

INFORMATION SHOWN IS NOT GUARANTEED AND SHOULD BE VERIFIED BY THE BUYER PRIOR TO PURCHASE OR LEASE.

9907 KRONE CT, HUMBLE, TX 77396



SECOND FLOOR-PLAN



LOCATED IN THE CANYON GATE PARKS LAKE SUBDIVISION (KEY MAP 376S)
 INFORMATION SHOWN IS NOT GUARANTEED AND SHOULD BE VERIFIED BY THE BUYER PRIOR TO PURCHASE OR LEASE.

9907 KRONE CT, HUMBLE, TX 77396