

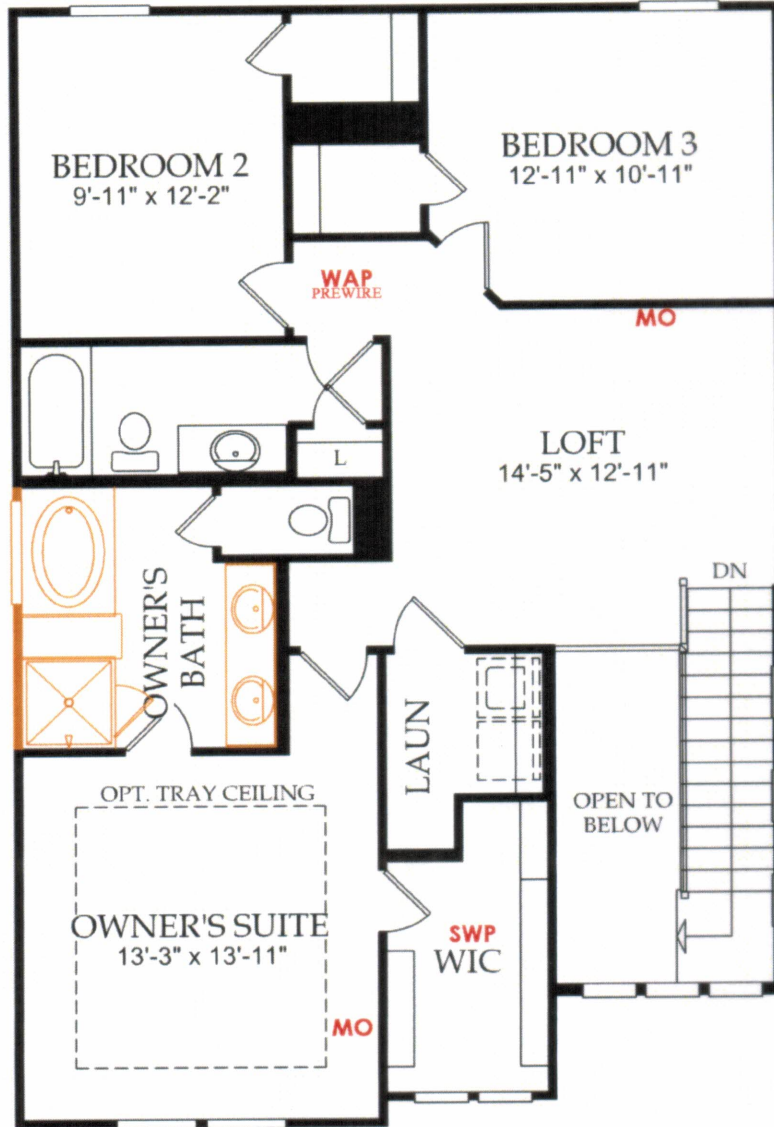
# 8908 Live Oak Grove Lane First Floor



JR  
9/20/16

- |   |  |  |   |
|---|--|--|---|
| <ul style="list-style-type: none"> <li>TV - TV Location (1 RG6)</li> <li>CAT - Phone or DATA (1 CAT5e)</li> <li>ENT - Home Entertainment (1 CAT5e/ 2 RG6)</li> <li>HO - Home Outlet(2 CAT5e/1 RG6)</li> <li>UNV - Universal Outlet (2 CAT5e/2 RG6)</li> <li>NO - Network Outlet (3 CAT5e/ 1 RG6)</li> <li>SP - Speaker Prewire</li> <li>SP - In-Ceiling Speaker Prewire</li> <li>SP - In-Wall Speaker Prewire</li> <li>SPA - Atmos Speaker Prewire</li> <li>NP - Network (2 CAT5e)</li> </ul> | <ul style="list-style-type: none"> <li>SUB - Subwoofer (1 RG6)</li> <li>SS - Surround Sound Prewire Homerun</li> <li>DVC - Digital Volume Control <u>Prewire Only</u></li> <li>ST - Stereo Speaker Prewire Homerun</li> <li>HDMI - HDMI Bundle (2 HDMI/2 CAT5e Trimmed)(Conduit)</li> <li>HD - HDMI Bundle Homerun Location</li> <li>PROJ - Projector Bundle (2 HDMI/ 2 CAT5e Trimmed)(Conduit)</li> <li>SWP - Structured Wiring Panel</li> <li>PR - Projector Bundle Homerun</li> <li>EV - Electrical Outlet (110 Volt)</li> <li>MO - Media Outlet (1 RG6/1 CAT5e)</li> </ul> | <ul style="list-style-type: none"> <li>CAM - Camera Location</li> <li>NVR - Camera NVR Homerun</li> <li>DVR - Camera DVR Homerun</li> <li>CD - Conduit (Installed next to electrical)</li> <li>CH - Conduit Homerun</li> <li>5R - 5 Runs of Cat5e Bundled</li> <li>5RH - 5 Runs of Cat5e Homerun</li> <li>MD - Motion Detector</li> <li>KP - Keypad</li> <li>GB - Glass Break Detector</li> <li>LZ - Lighting Zone (1 Light switch)</li> <li>AP - Home Automation Panel Prewire</li> </ul> | <ul style="list-style-type: none"> <li>WAP - Wireless Access Point Prewire (1 CAT5e)</li> <li>VAC - Central Vac Master Location</li> <li>INT - Intercom Station Prewire</li> <li>IMU - Intercom Master Unit</li> <li>RS - Rock Speaker</li> <li>IR - IR Control</li> <li>OH - Overhead Garage Switch</li> <li>HH - Hammer Height</li> <li>SWP2 - Structured Wiring Panel 2</li> <li>TUX - Tuxedo Keypad</li> <li>TUX - TUX Cat5e at Approx. 9'</li> </ul> |
|---|--|--|---|

## 8908 Live Oak Grove Lane Second Floor



*JR*  
*9/20/16*

- |   |  |  |   |
|---|--|--|---|
| <ul style="list-style-type: none"> <li>TV - TV Location (1 RG6)</li> <li>CAT - Phone or DATA (1 CAT5e)</li> <li>ENT - Home Entertainment (1 CAT5e/ 2 RG6)</li> <li>HO - Home Outlet (2 CAT5e/1 RG6)</li> <li>UNV - Universal Outlet (2 CAT5e/2 RG6)</li> <li>NO - Network Outlet (3 CAT5e/ 1 RG6)</li> <li>SP - Speaker Prewire</li> <li>SP - In-Ceiling Speaker Prewire</li> <li>SP - In-Wall Speaker Prewire</li> <li>AT - Atmos Speaker Prewire</li> <li>NP - Network (2 CAT5e)</li> </ul> | <ul style="list-style-type: none"> <li>SUB - Subwoofer (1 RG6)</li> <li>SS - Surround Sound Prewire Homerun</li> <li>DVC - Digital Volume Control Prewire Only</li> <li>ST - Stereo Speaker Prewire Homerun</li> <li>HDMI - HDMI Bundle (2 HDMI/2 CAT5e Trimmed)(Conduit)</li> <li>PROJ - Projector Bundle (2 HDMI/ 2 CAT5e Trimmed)(Conduit)</li> <li>SWP - Structured Wiring Panel</li> <li>PR - Projector Bundle Homerun</li> <li>EO - Electrical Outlet (110 Volt)</li> <li>MO - Media Outlet (1 RG6/1 CAT5e)</li> </ul> | <ul style="list-style-type: none"> <li>CAM - Camera Location</li> <li>CD - Camera DVR Homerun</li> <li>CO - Conduit (Installed next to electrical)</li> <li>CH - Conduit Homerun</li> <li>5R - 5 Runs of Cat5e Bundled</li> <li>5H - 5 Runs of Cat5e Homerun</li> <li>MD - Motion Detector</li> <li>KP - Keypad</li> <li>GB - Glass Break Detector</li> <li>LZ - Lighting Zone (1 Light switch)</li> <li>AP - Home Automation Panel Prewire</li> </ul> | <ul style="list-style-type: none"> <li>WAP - Wireless Access Point Prewire (1 CAT5e)</li> <li>VAC - Central Vac Master Location</li> <li>INT - Intercom Station Prewire</li> <li>IMU - Intercom Master Unit</li> <li>RS - Rock Speaker</li> <li>IR - IR Control</li> <li>OH - Overhead Garage Switch</li> <li>HH - Hammer Height</li> <li>SWP2 - Structured Wiring Panel 2</li> <li>TUX - Tuxedo Keypad</li> <li>TUX - TUX Cat5e at Approx. 9'</li> </ul> |
|---|--|--|---|