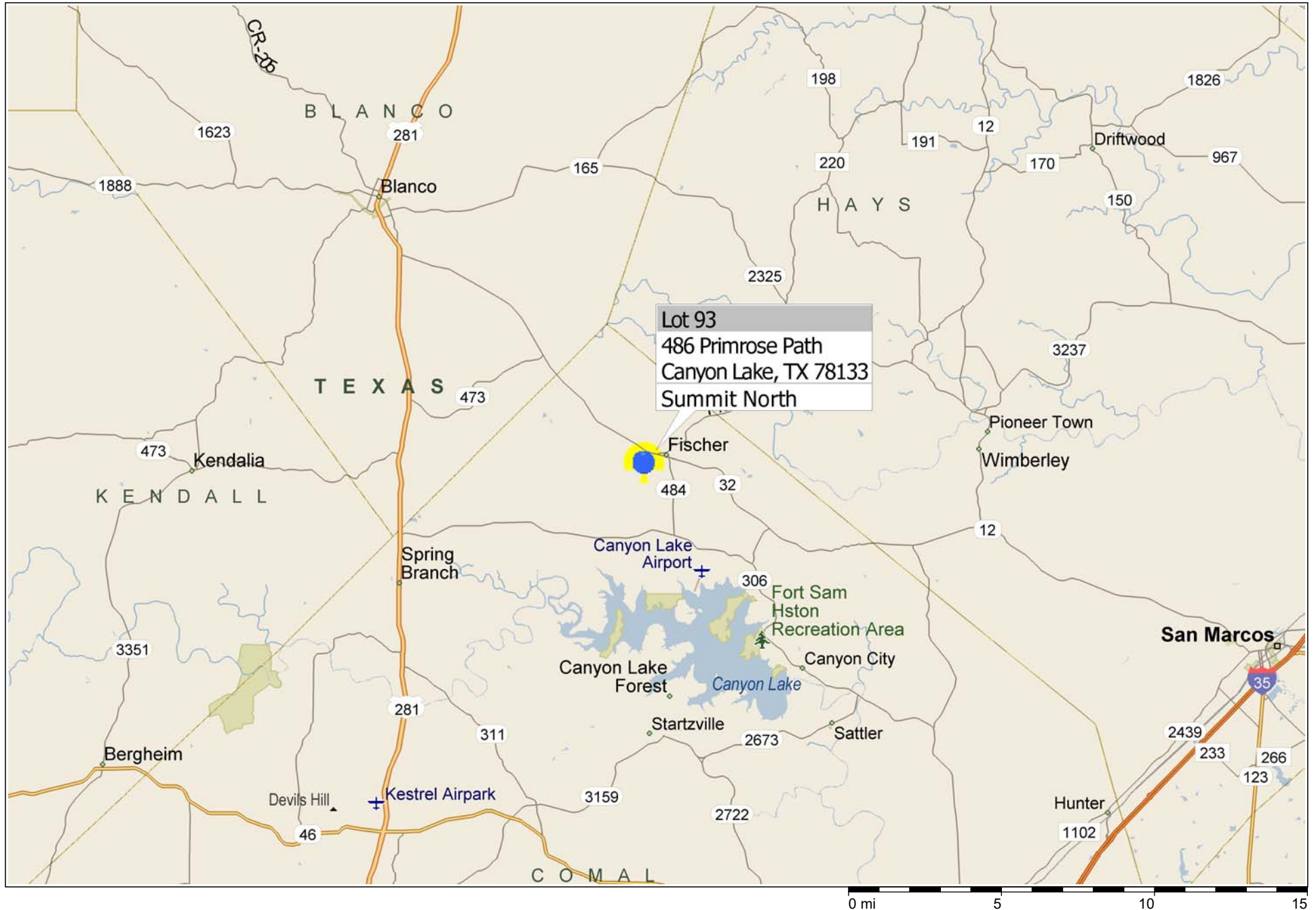


486 Primrose Path, Canyon Lake ~ Summit North





N 0° 21' 30" E
100.00'
NATIVE PEAK
S 87° 00' 00" W
0.827 ac

N 0° 21' 30" E
100.00'
S 87° 00' 00" W
0.827 ac

N 0° 21' 30" E
100.00'
S 87° 00' 00" W
0.827 ac

N 0° 21' 30" E
100.00'
S 87° 00' 00" W
0.827 ac

N 0° 21' 30" E
100.00'
S 87° 00' 00" W
0.827 ac

N 0° 21' 30" E
100.00'
S 87° 00' 00" W
0.827 ac

N 0° 21' 30" E
100.00'
S 87° 00' 00" W
0.827 ac

N 0° 21' 30" E
100.00'
S 87° 00' 00" W
0.827 ac

N 0° 21' 30" E
100.00'
S 87° 00' 00" W
0.827 ac

N 0° 21' 30" E
100.00'
S 87° 00' 00" W
0.827 ac

N 0° 21' 30" E
100.00'
S 87° 00' 00" W
0.827 ac

N 0° 21' 30" E
100.00'
S 87° 00' 00" W
0.827 ac

N 0° 21' 30" E
100.00'
S 87° 00' 00" W
0.827 ac

N 0° 21' 30" E
100.00'
S 87° 00' 00" W
0.827 ac

N 0° 21' 30" E
100.00'
S 87° 00' 00" W
0.827 ac

N 0° 21' 30" E
100.00'
S 87° 00' 00" W
0.827 ac

N 0° 21' 30" E
100.00'
S 87° 00' 00" W
0.827 ac

N 0° 21' 30" E
100.00'
S 87° 00' 00" W
0.827 ac

N 0° 21' 30" E
100.00'
S 87° 00' 00" W
0.827 ac

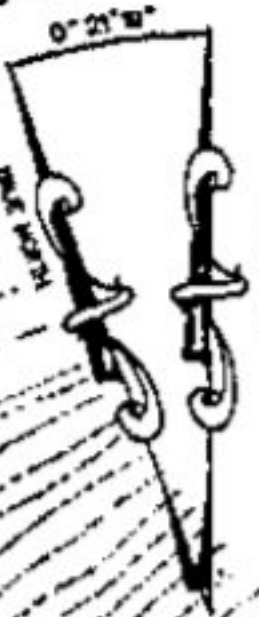
N 0° 21' 30" E
100.00'
S 87° 00' 00" W
0.827 ac

N 0° 21' 30" E
100.00'
S 87° 00' 00" W
0.827 ac

N 0° 21' 30" E
100.00'
S 87° 00' 00" W
0.827 ac

N 0° 21' 30" E
100.00'
S 87° 00' 00" W
0.827 ac

N 0° 21' 30" E
100.00'
S 87° 00' 00" W
0.827 ac



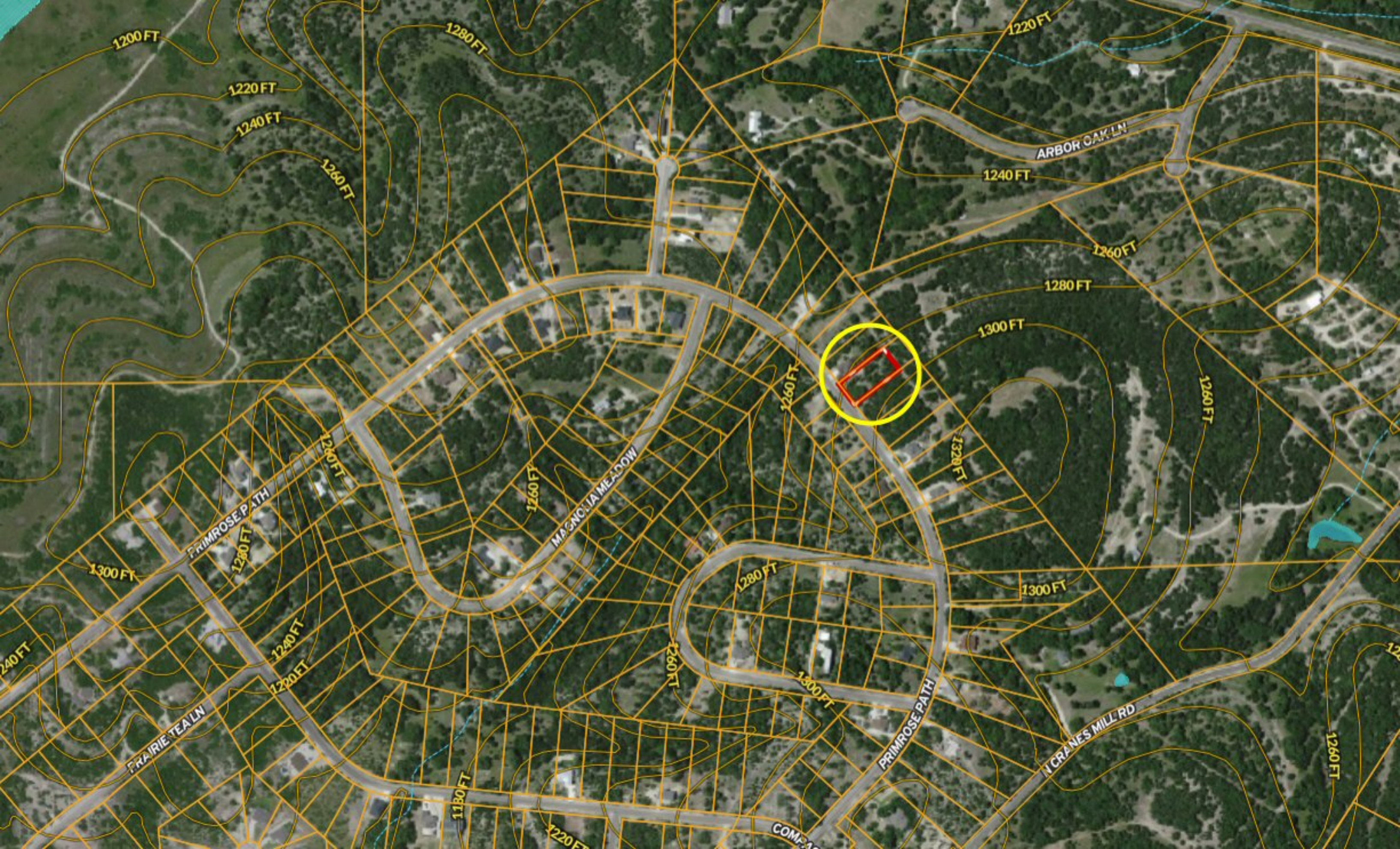
GRID NORTH
BEARING BASE
STATE PLANE COORDINATES
SOUTH CENTRAL ZONE

SCALE: 1" = 150'

TEMPER PATH (60' ROW)

TEMPLE STREET

127' ROW AIR ROAD





PRIMROSE PATH

MAGNOLIA MEADOW

PRIMROSE PATH

PRIMROSE PATH

1280 FT

1260 FT

1220 FT

1260 FT

1260 FT

1280 FT

1300 FT

1300 FT

1280 FT

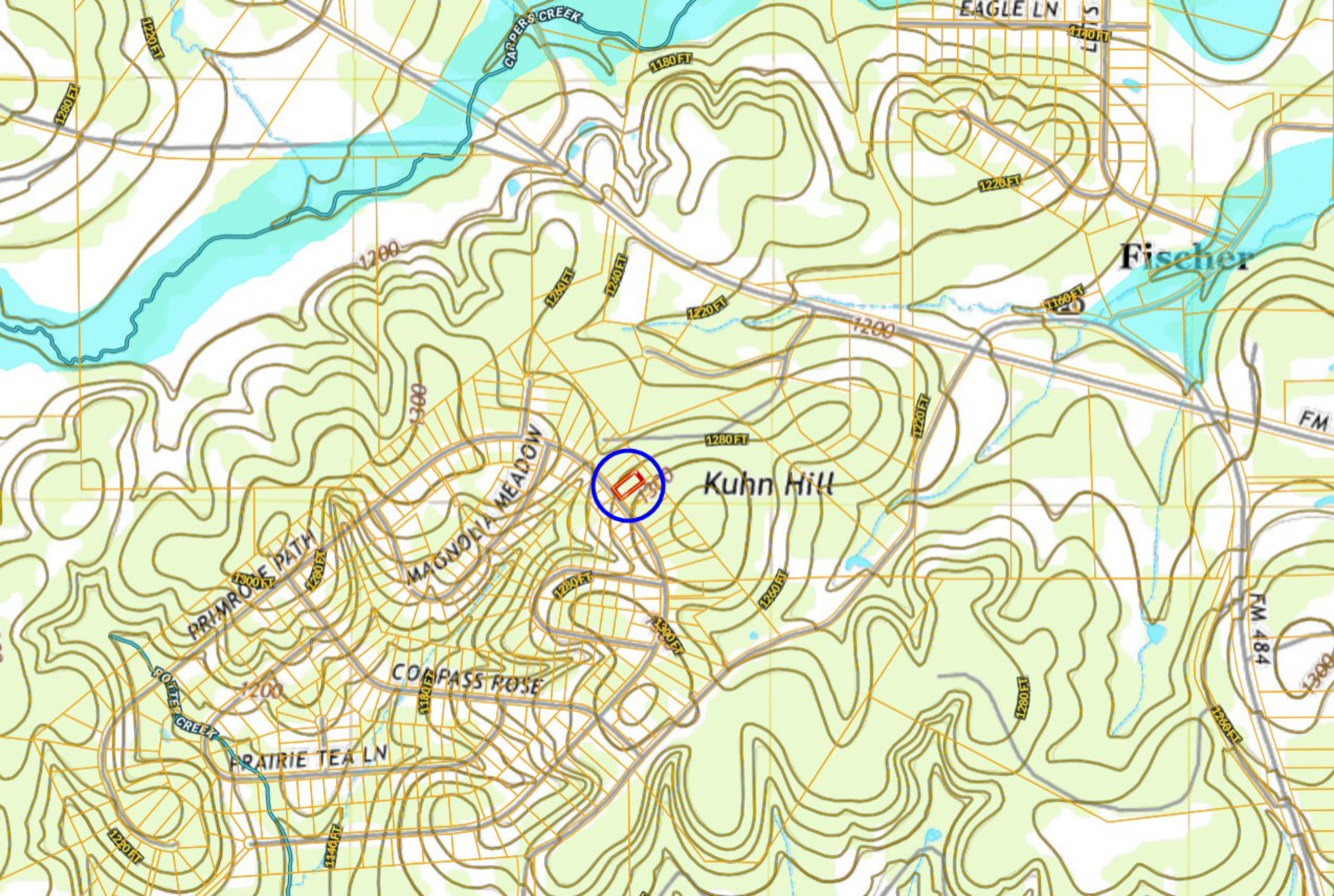
1260 FT

1280 FT

1300 FT

1320 FT

1320 FT



EAGLE LN

CARPER'S CREEK

Fischer

Kuhn Hill

MAGNOLIA MEADOW

COMPASS ROSE

PRAIRIE TEA LN

PRIMROSE PATH

FM 484