

Harris County Appraisal District



0 50 100 200 Feet

PUBLICATION DATE: 3/30/2021

Geospatial or map data maintained by the Harris County Appraisal District is for informational purposes and may not have been prepared for or be suitable for legal, engineering, or surveying purposes. It does not represent an on-the-ground survey and only represents the approximate location of property boundaries.

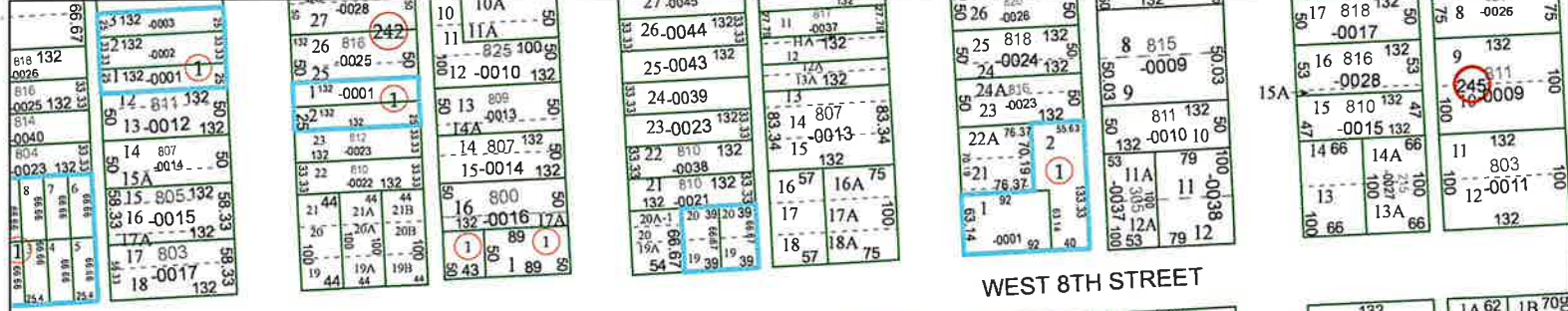
MAP LOCATION



FACET 5358A10

8	5	6	7	8
12	9	10	11	12
4	1	2	3	4

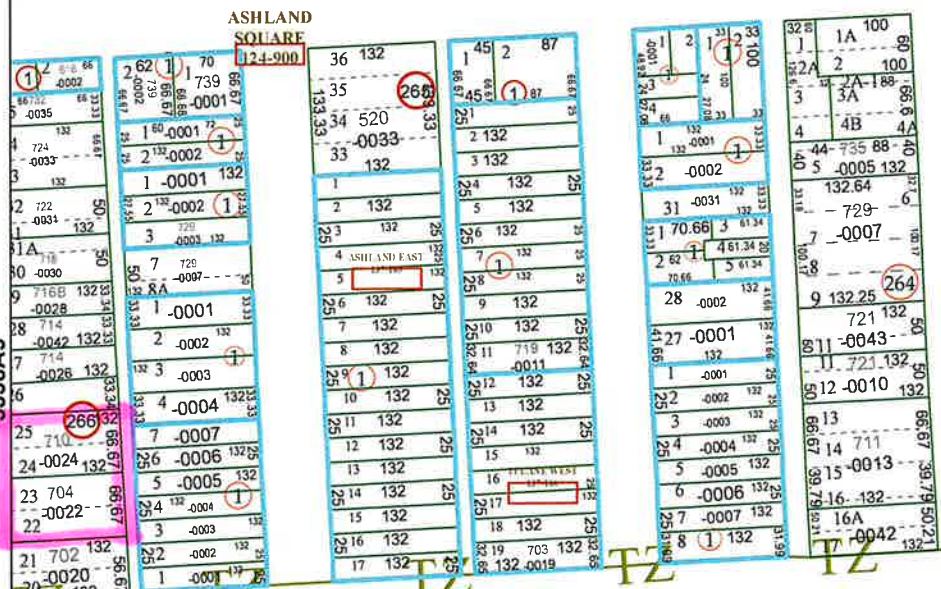
5358A6



WEST 8TH STREET

RUTLAND STREET

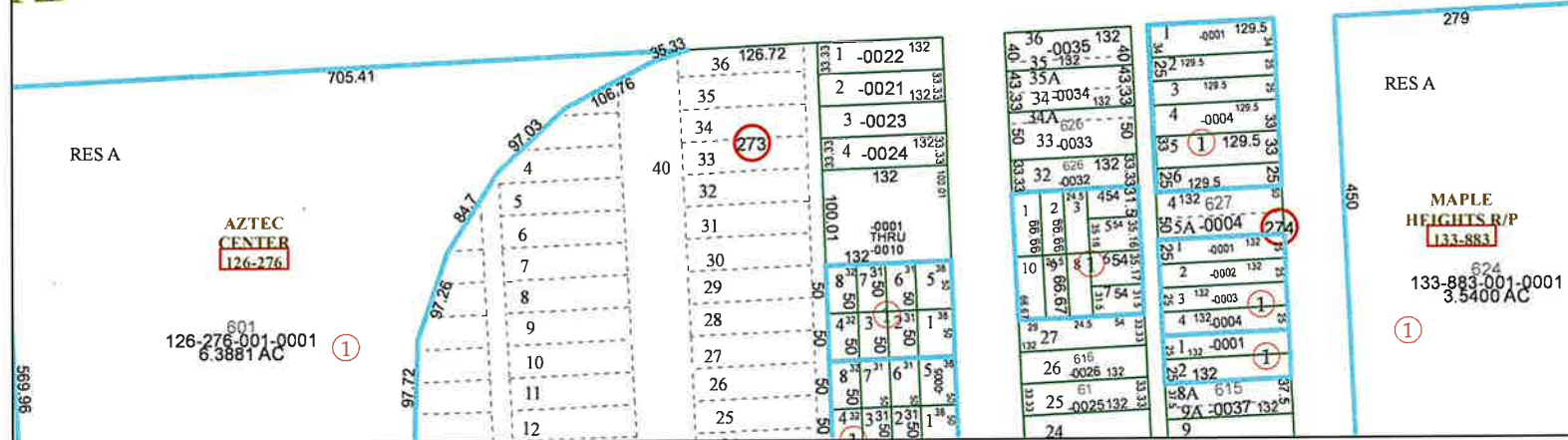
ASHLAND SQUARE 124-900



5358A9

5358A11

AZTEC CENTER 126-276



MAPLE HEIGHTS R/P 133-883

5358C2