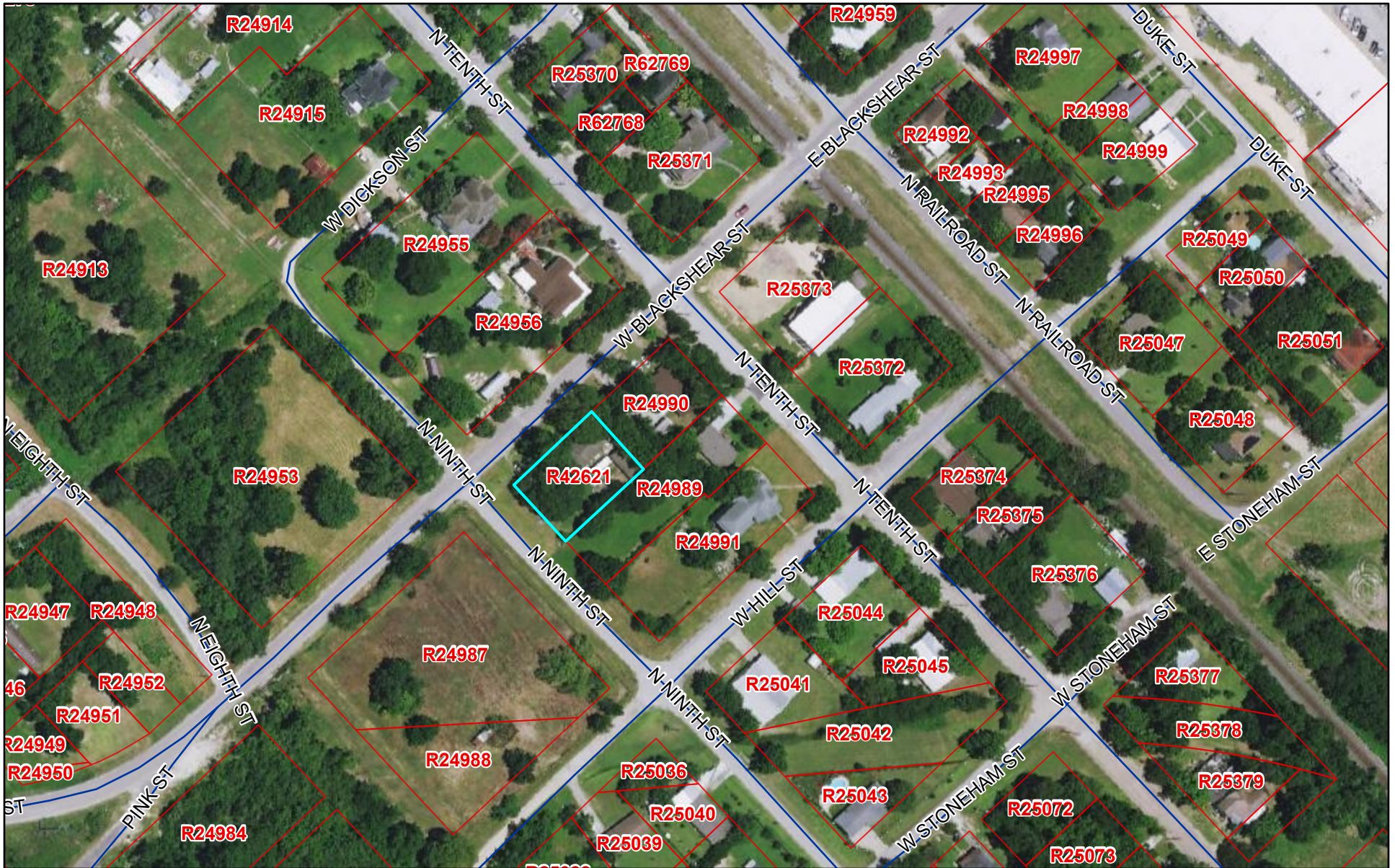


Grimes CAD Web Map



9/28/2021, 9:31:39 AM

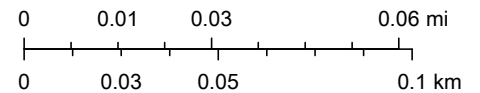
Abstracts

Parcels

World Boundaries and Places

Roads

1:2,257



Esri, HERE, Garmin, iPC

Grimes County Appraisal District, BIS Consulting - www.bisconsulting.com

Disclaimer: This product is for informational purposes only and has not been prepared for or be suitable for legal, engineering, or surveying purposes. It does not represent an on-the-ground survey and represents only the approximate relative location of boundaries.