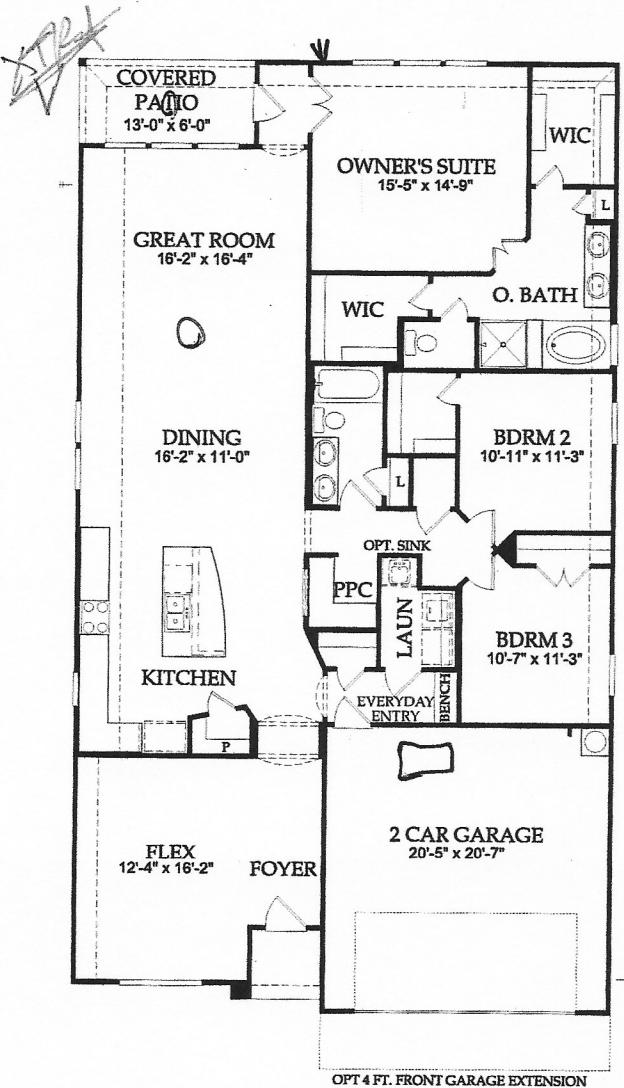


Approximately 2,206 Sq. Ft.

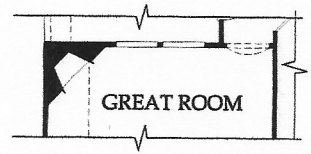
- 1-Story, 3-4 Bedrooms, 2-3 Baths
- Flex Room, Pulte Planning Center® (PPC), Everyday Entry™, Covered Patio, 2-Car Garage

OPTIONAL: Bedroom/Bath or Study in lieu of Flex Room, Owner's Bath Option, Bay Window at Owner's Suite, Fireplace at Great Room, 3-Car Garage

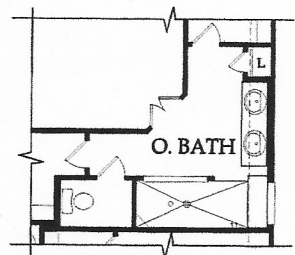
## King Crossing SIERRA COLLECTION



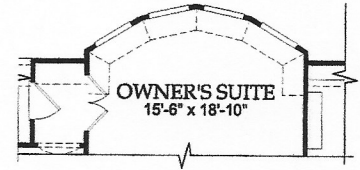
Single-Level



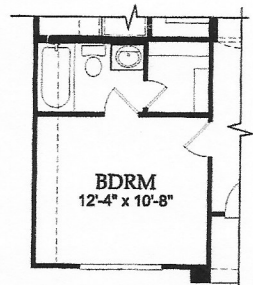
Optional Fireplace at Great Room



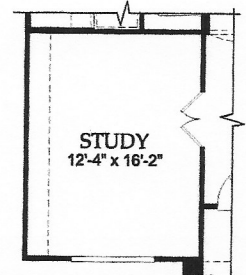
Owner's Bath Option



Optional Bay Window at Owner's Suite

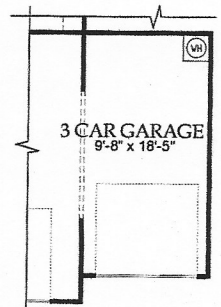


Optional Bedroom/Bath in lieu of Flex Room



Optional Study in lieu of Flex Room

XTPA



Optional 3-Car Garage

## King Crossing Sierra Collection

### Interior

- Emser Tile® 13" Ceramic Tile in Foyer, Bathrooms, Kitchen, and Laundry Room
- Shaw® Carpet with 5.5-pound Carpet Pad
- Rounded Drywall Corners with Textured Walls and Ceilings
- Sherwin-Williams® Interior Paint
- Rocker Light Switches
- Ceiling Fans w/ 4-Light Kit in Gathering Room, Owner's Suite, and Game Room (Per Plan)
- All Secondary Bedrooms Blocked and Prewired for Ceiling Fans
- Kichler® Nickel Light Fixture Package
- Fluorescent Lighting in Laundry Room and Owner's Closet
- Raised 3-Panel Textured Interior Doors
- Privacy Locks on Owner's Suite and all Bathroom Doors
- Schlage® Nickel Lever Interior Door Hardware
- 9-foot Ceiling Heights
- 3 1/4" Colonial Baseboards with 2 1/8" Door Casing
- Crown Molding in Owner's Suite, Dining Room, and Foyer (Per Plan)
- Wood Closet Rods and Shelving
- Staircases Include Wood Spindles with Stained Oak Handrail (Per Plan)
- Life Tested® Everyday Entry™ with Mud Bench – Includes bench with lower storage cubbies (Per Plan)
- Life Tested® Pulte Planning Center® (Per Plan)

### Kitchen

- Timberlake Cabinetry® Birch Flat Panel Cabinets with 36" Uppers and Crown Molding
- Whirlpool® Black Appliance Package – Features Free Standing Gas Range, Microwave/Range Hood Combination Vented to the Exterior, and EnergyStar® Certified Dishwasher
- 3 CM Granite or 2 CM Silestone® Countertops in Kitchen and Pulte Planning Center® (Per Plan)
- Recessed Can Lighting
- InSinkErator® Garbage Disposal
- Amerisink® Stainless Steel Double-Equal Undermount Kitchen Sink
- Moen® Chrome Single Handle Faucet with Side Hand Spray

### Bathrooms

- Timberlake Cabinetry® Birch Flat Panel Cabinets
- Comfort Height Double Vanity in Owner's Bathroom
- Comfort Height Vanity in Secondary Bathrooms
- Medicine Cabinet in Owner's Bathroom
- 2 CM Granite Vanity Countertops with Undermount Porcelain Sinks in Owner's and Secondary Bathrooms
- Moen® Chrome Plumbing Fixtures and Bathroom Accessories
- Gerber® Elongated Toilets including Comfort Height in Owner's Bathroom and Powder Room (Per Plan)
- Glass Enclosed Shower with Emser Tile® Ceramic Tile Shower Surround and Garden Tub with Deck-Mounted Faucets in Owner's Bathroom
- Gerber® White Pedestal Sink in Powder Room (Per Plan)

### Exterior

- Acme Brick® American Made Clay Brick on 3 Sides of Home (100-Year Guarantee)
- LP® SmartSide® Siding and Trim with 50-Year Manufacturer Warranty
- Sherwin-Williams® Exterior Paint
- Vinyl Divided Light Windows on Front of Home with Half-Screens on all Operable Windows
- 6'8" Therma-Tru® Insulated Textured 6-Panel Front Door
- Schlage® Single Cylinder Handleset with Deadbolt Lock
- Full Light Door at Rear Entry
- Professional Landscape Package in Front Yard
- Full Yard Sod
- Two Coach Lights on Garage
- Gutters and Downspouts on Front of Home
- Windsor® Durable Embossed Steel Garage Door
- LiftMaster® 1/2 HP Garage Door Opener with 2 Remotes



Prices subject to change without notice. All square footage is approximate. Pulte Homes® reserves the right to revise specifications and dimensions without notice. Flooring, appliances, room sizes, windows, roofs, ceilings and exteriors may vary. Pulte Homes® is a brand of Pulte Homes, Inc. All offers subject to availability. Void where prohibited. 5/1/16



## King Crossing Sierra Collection

### Exterior (cont'd)

- 16' Wide 2-Car Driveway with 3' Wide Private Walkway from Porch to Driveway
- Two Hose Bibbs on Exterior of Home
- Cast Stone Address Blocks
- Covered Rear Patio Blocked and Wired for Ceiling Fan (varies per plan)
- Broom Finish Front Porches
- Asphalt 30-Year Architectural Shingles
- 6-foot Privacy Fence with Gate

### Energy

- Lennox® 16 SEER High Efficiency HVAC System with Environmentally Friendly 410A Refrigerant and R6 Rated Duct System
- Insulation Package Includes:
  - R-13 Batt Insulation Installed in wall with Zero Tolerance Application
  - R-22 Fiberglass Insulation in Sloped Ceilings
  - R-30 Fiberglass Insulation in Attic
- High Efficiency Insulated Low-E 366 Vinyl Glass Windows
- Energy Efficient Gas Water Heater
- Radiant Barrier Roof Decking
- Water-Resistant Barrier Thermo-Ply® Protective Sheathing
- Programmable Honeywell™ Thermostat
- Electric Dryer Hookups with Outside Vent
- Roof Vents for Added Ventilation

### Design Center

- Personal appointment with a Professional Decorating Consultant at the Design Center

### Protection Plan

- Cable and Rebar Slab per Engineered Drawing with 3000 PSI Concrete
- Borate Treatment on all Exterior Walls and Slab Penetrations with Taexx® Tubes in the Wall® Built-In Pest Control System in First-Floor Exterior Walls and Plumbing Walls
- Professionally Engineered frame designs
- GFCI Receptacles Located on Home Exterior and in Garage
- Professionally conducted Third Party Inspections at Foundation, Frame, HVAC Duct, and Final Stages
- 1 Year Limited Warranty
- 2 Year Mechanical Warranty
- 5 Year Water Intrusion Warranty
- 10 Year Structural Warranty
- Builder Serviced Warranty

### Smart Home Features

- Cat 6/RG-6 Combo Media Outlet in Gathering Room (Location per plan)
- Cat 6 Wiring to future Wireless Access Point (Location per plan)
- 30" x 16" Plastic Structured Wiring Enclosure (Location per plan)
- 1" Flexible Conduit Run from Structured Wiring Enclosure to Exterior of Home for future ISP Connection
- Design Center appointment with Low Voltage Technician to Discuss optional Smart Home Technology



Prices subject to change without notice. All square footage is approximate. Pulte Homes® reserves the right to revise specification and dimensions without notice. Flooring, appliances, room sizes, windows, roofs, ceilings and exteriors may vary. Pulte Homes® is a brand of Pulte Homes, Inc. All offers subject to availability. Void where prohibited. © 2016

