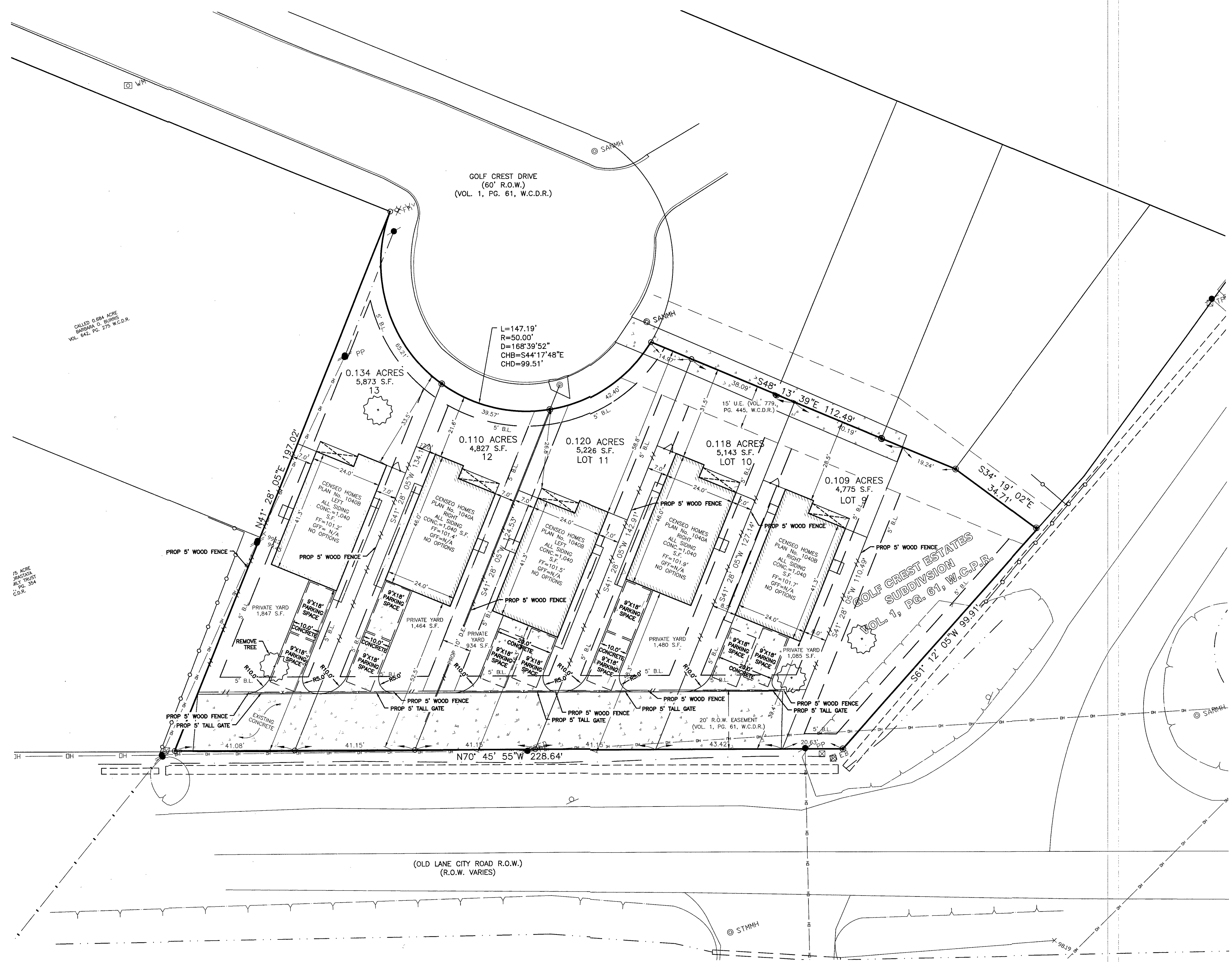


LEGEND

A.E. = AERIAL EASEMENT
W.C.C.F. = BRAZORIA COUNTY CLERK'S FILE
W.C.D.R. = BRAZORIA COUNTY DEED RECORDS
W.C.P.R. = BRAZORIA COUNTY PLAT RECORDS
B.L. = BUILDING LINE
BM = BENCHMARK
C.I.R. = CAPPED IRON ROD
E.E. = ELECTRIC EASEMENT
FND = FOUND
I.R. = IRON ROD
I.P. = IRON PIPE
MH = MANHOLE
No. = NUMBER
P.O.B. = POINT OF BEGINNING
P.O.C. = POINT OF COMMENCEMENT
R.O.W. = RIGHT-OF-WAY
S.F. = SQUARE FEET
S.S.E. = SANITARY SEWER EASEMENT
STM.S.E. = STORM SEWER EASEMENT
U.E. = UTILITY EASEMENT
VOL. Pg. = VOLUME PAGE
W.L.E. = WATER LINE EASEMENT
BXC = BOX CULVERT
CONC = CONCRETE
FL = FLOWLINE
FO = FIBER OPTIC
GT = GUTTER
OHP = OVERHEAD ELECTRIC POWER
RCP = REINFORCED CONCRETE PIPE
SAN = SANITARY
SEW = SEWER
STM = STORM

SYMBOLS

● = FOUND MONUMENT AS NOTED
○ = SET 5/8" C.I.R. "BAKER & LAWSON"
⊕ = WATER VALVE
⊙ = FIRE HYDRANT
⊛ = POWER POLE
⊘ = SIGN
○ = PIPELINE MARKER
⊙ = MANHOLE
⊞ = GRATE INLET



NO.	DATE	DESCRIPTION	APPROVED
REVISIONS			

DESIGNED RL
DRAWN
CHECKED
DATE

B & L
BAKER & LAWSON, INC.
ENGINEERS • PLANNERS • SURVEYORS
4005 TECHNOLOGY DRIVE, SUITE 1530
ANGLETON, TEXAS 77515 (979) 849-6681
REG. NO. F-825

STATE OF TEXAS
RANDALL J. LISKA
REGISTERED PROFESSIONAL ENGINEER
89374

The seal appearing on this document was authorized by
Randall J. Liska
P.E. 89374
Date: September 10, 2021

OWNER:
CENSEO HOMES
1800 AUGUSTA DRIVE SUITE 340
HOUSTON, TEXAS, 77057

PLAN: 1" = 20'
PROFILE:
HORIZONTAL:
VERTICAL:

GOLF CREST ESTATES SUBDIVISION
LOTS 9, 10, 11, 12 AND 13

SITE PLAN
PROJECT NO. 14627