

(84).

SURVEY PLAT

LAURA A. JOSEY EST. 339.5 Ac.

JACOB STEVENS LG.

AUSTIN CO. TEX.

1" = 1000'

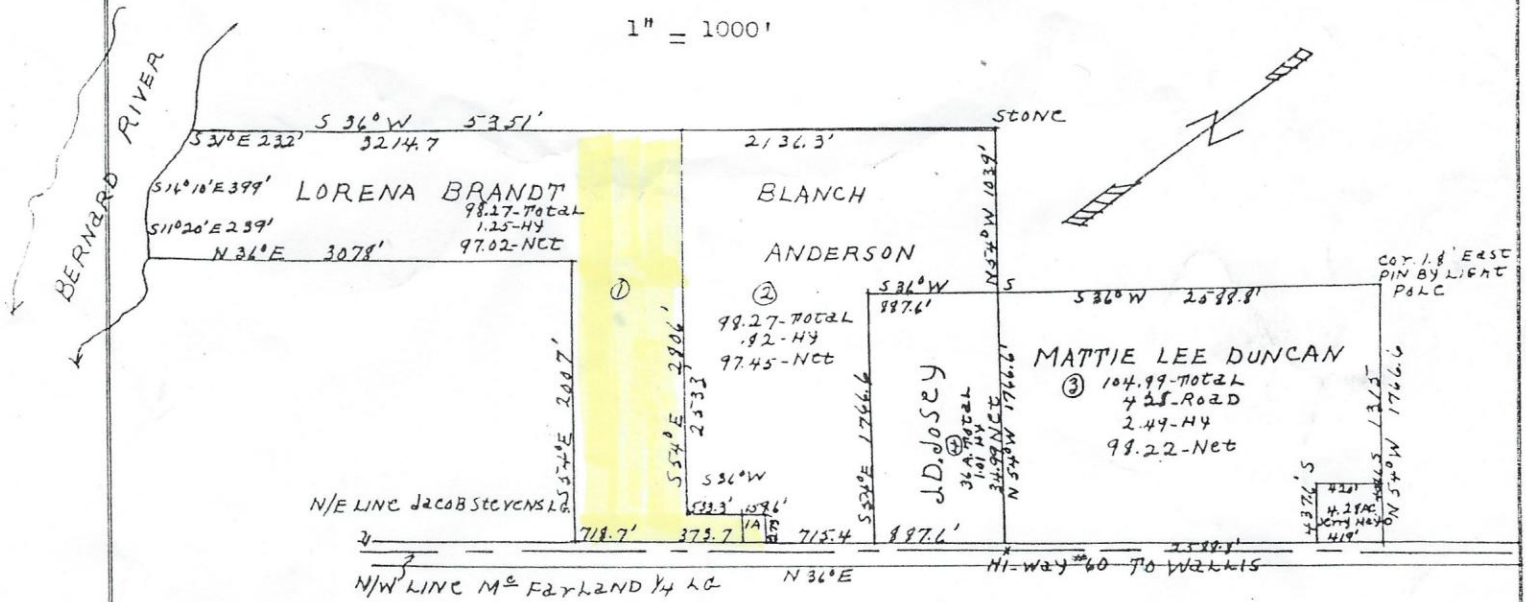


EXHIBIT "A"

STATE OF TEXAS

COUNTY OF FT. BEND

I Charles Schultz, a duly qualified surveyor, do hereby certify that the Map shown hereon is a true and correct map and record of the actual survey of the land shown thereon, made by me on the ground on the 17th day of March 1941

(Seal) Charles Schultz

Filed for Record at 8:00 o'clock A. M., August 22, A. D., 1942. Ed. Batla, Clerk. By Lawrence Dittert, Deputy. Recorded at 4:50 o'clock P. M., August 29, A. D., 1942.

Ed. Batla, Clerk, County Court, Austin County, Texas.

By Dorothy Krueger, Deputy.

The highlighted part is our property.