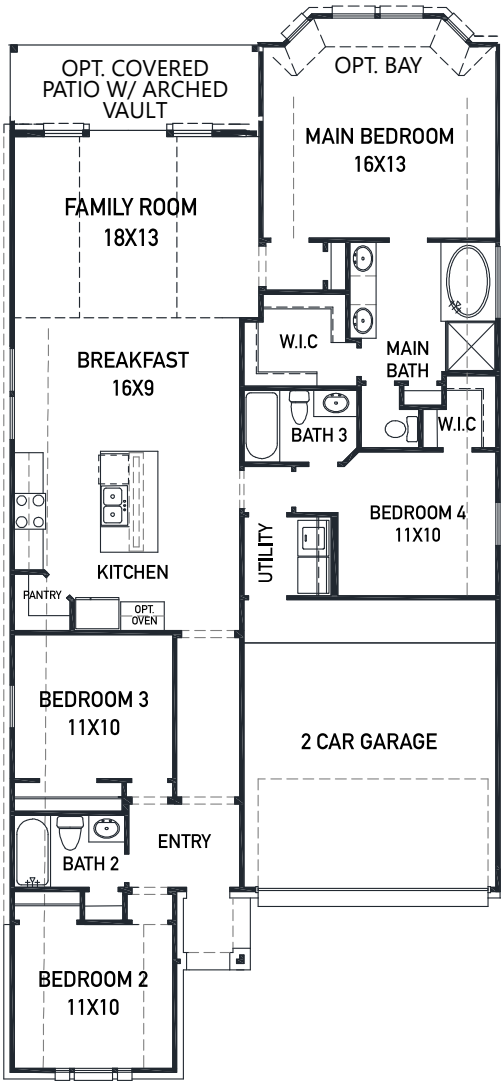




1831 Waters Branch Dr. - Cameron Plan
 SIENNA 45' - Heritage Park - Section 29A

NEW HOME COMING SOON!



FIRST FLOOR PLAN



- Upgraded stucco front elevation w/ brick on 1st floor sides/back
- Built in appliances w/ a 36" 5 burner gas cook-top
- Modern 42" kitchen cabinetry w/ hardware
- Quartz countertops in the kitchen & bathrooms
- High end vinyl in the main living areas
- Upgraded 8 ft. front door

- THE NEWMARK STANDARD IN SIENNA
- Open cell spray foam insulation
- 16 seer dual stage HVAC system
- Full sprinkler system & sod
- Full rain gutters
- Environments for living builder
- 3rd party inspections (Foundation, frame, energy, final)

FEATURES

- 1 Story - Apx: 1780 sqft.
- 4 Bedrooms - 3 Bathrooms
- 2 Car Garage
- 45 x 131 Homesite - 5934 sqft.
- Estimated Completion: Feb 2022

REV 8/20 (451C)



These drawings are conceptual only and are for the convenience of reference. They should not be relied upon as representations, express or implied, of the final detail of the residences. The builder expressly reserves the right to make modifications, revisions, and changes it deems desirable in its sole and absolute discretion. Dimensions and square footages are approximate and may vary with actual construction.



newmarkhomes.com