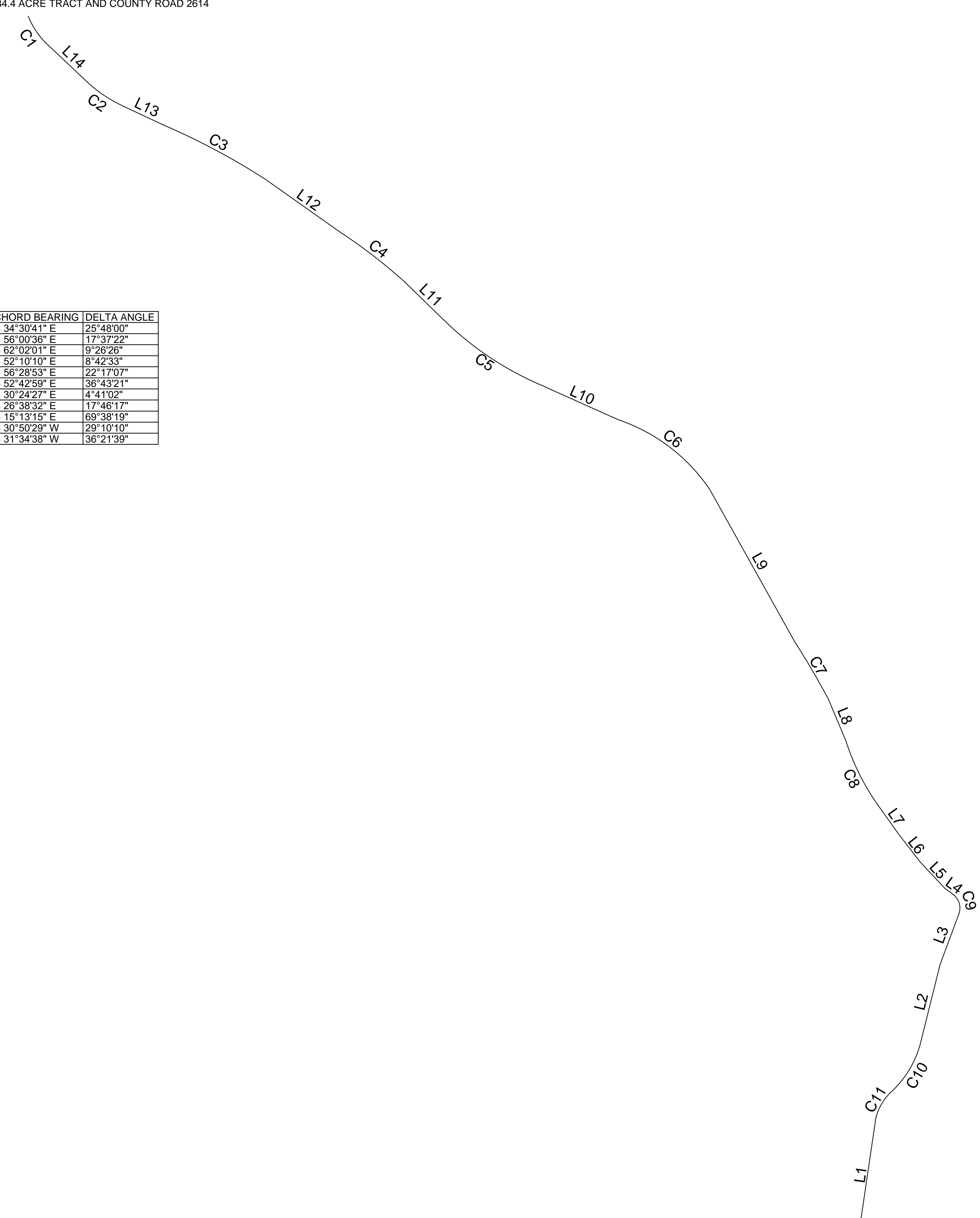


INTERIOR CORNER CALLED 1.106 ACRE TRACT
 SOUTHWEST CORNER OF TRACT TWO, A CALLED 184.4 ACRE TRACT
 AT THE INTERSECTION OF OF THE SOUTH BOUNDARY LINE OF CALLED 184.4 ACRE TRACT AND COUNTY ROAD 2614

LINE	BEARING	DISTANCE
L1	S 08°23'01" W	515.96
L2	S 13°55'40" W	370.86
L3	S 20°27'16" W	242.01
L4	S 33°38'57" E	49.67
L5	S 43°12'44" E	158.59
L6	S 37°41'15" E	158.28
L7	S 35°31'00" E	154.07
L8	S 22°47'17" E	204.36
L9	S 29°11'36" E	777.64
L10	S 65°48'12" E	362.22
L11	S 45°43'49" E	231.50
L12	S 54°45'14" E	422.25
L13	S 64°48'17" E	203.08
L14	S 46°37'50" E	238.67

CURVE	RADIUS	ARC LENGTH	CHORD LENGTH	CHORD BEARING	DELTA ANGLE
C1	350.10	157.65	156.32	S 34°30'41" E	25°48'00"
C2	606.52	186.27	185.54	S 36°00'38" E	17°37'22"
C3	3075.89	506.81	506.24	S 62°02'01" E	9°26'26"
C4	2359.87	358.71	358.36	S 52°10'10" E	8°42'33"
C5	1387.09	543.40	539.98	S 56°28'53" E	22°17'07"
C6	797.90	511.40	502.69	S 52°42'59" E	36°43'21"
C7	3577.33	292.44	292.36	S 30°24'27" E	4°41'02"
C8	1039.99	322.57	321.28	S 26°38'32" E	17°46'17"
C9	73.32	89.11	83.73	S 15°13'15" E	69°38'19"
C10	452.90	230.57	228.09	S 30°50'29" W	29°10'10"
C11	242.30	153.77	151.20	S 31°34'58" W	36°21'39"



POINT IN THE SOUTH BOUNDARY LINE OF CALLED 634 ACRE TRACT

NORTH BOUNDARY LINE OF TRACT A, A CALLED 200 ACRE TRACT

AT THE INTERSECTION OF SAME AND CENTERLINE OF EXISTING LEASE/WOODS, GRAVEL/DIRT ROAD

