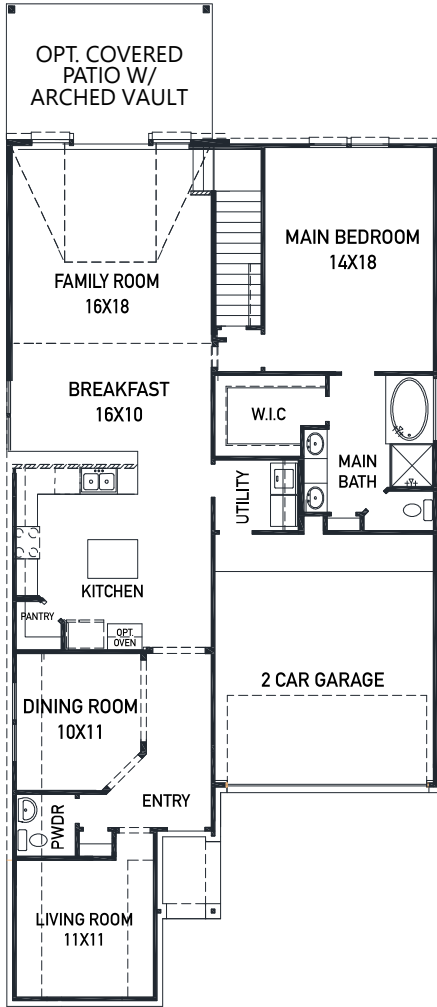


N

1815 Waters Branch Dr. - Bailey Plan

SIENNA 45' - Heritage Park - Section 29A

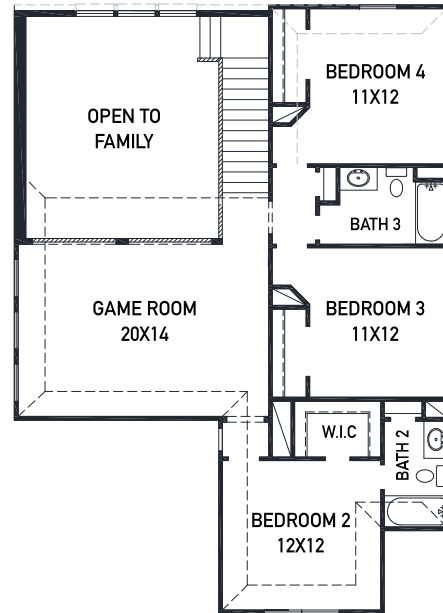
NEW HOME COMING SOON!



FIRST FLOOR PLAN

FEATURES

- 2 Story - Apx: 2726 sqft.
- 4 Bedrooms - 3.5 Bathrooms
- 2 Car Garage
- 45 x 132 Homesite - 6345sqft.
- Estimated Completion: Feb. 2022



SECOND FLOOR PLAN

- Upgraded stucco front elevation w/ brick on 1st floor sides/back
- Built in appliances w/ a 36" 5 burner gas cook-top
- Modern 42" kitchen cabinetry w/ hardware
- Quartz countertops in the kitchen & bathrooms
- Wood look 6" x 36" tile in the main living areas
- Upgraded 8' front door with privacy granite glass

- THE NEWMARK STANDARD IN SIENNA
- Open cell spray foam insulation
- 16 seer duel stage HVAC system
- Full sprinkler system & sod
- Full rain gutters
- Environments for living builder
- 3rd party inspections (Foundation, frame, energy, final)

REV 8/20 (451B)



These drawings are conceptual only and are for the convenience of reference. They should not be relied upon as representations, express or implied, of the final detail of the residences. The builder expressly reserves the right to make modifications, revisions, and changes it deems desirable in its sole and absolute discretion. Dimensions and square footages are approximate and may vary with actual construction.

NEW MARK
HOMES

newmarkhomes.com