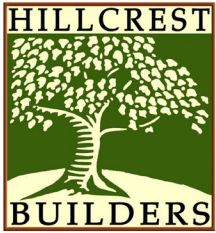


# Rice Residential Design

(713)984-8604



832-721-8771



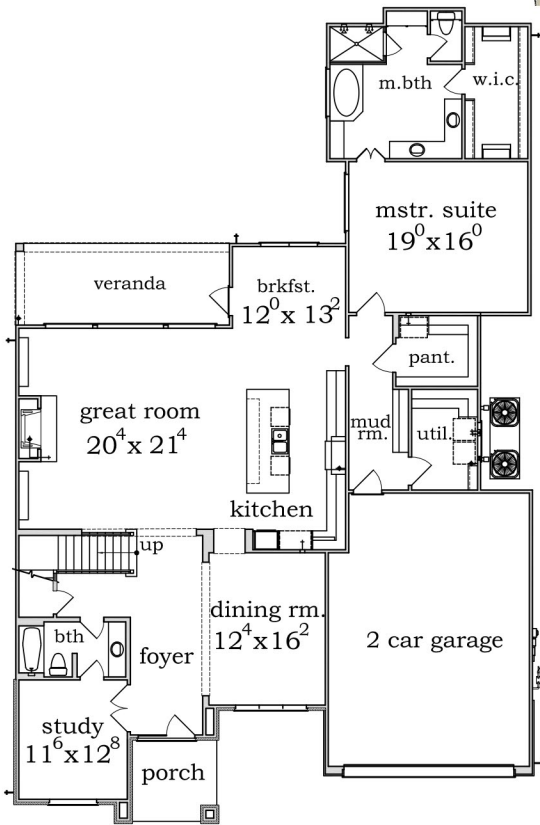
9629 Larston Street

### Approx. Living Area

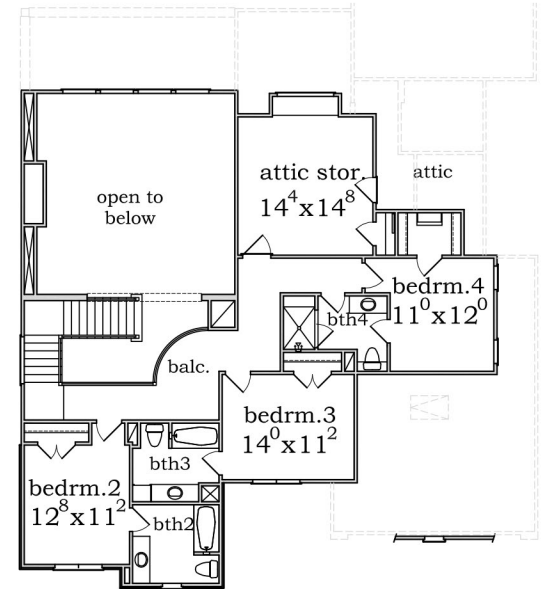
First Floor	2,576 sq. ft.
Second Floor	1,029 sq. ft.
<b>Total</b>	<b>3,605 sq. ft.</b>

Perimeter 54'-10" x 86'-6"  
Job No. 10101

This drawing is only a representation. Room sizes and square footage are approximate. Builder reserves right to alter plans, specifications and materials.



First Floor Plan



Second Floor Plan