

210 918

TRACT NO. 2

Being 3.114 acres of land, more or less, in the Harmon Lewis Survey, Abstract 1133, in Tyler County, Texas;

BEGINNING at a concrete monument set for the northeast corner of the herein described tract on the north line of said 16.0 acre tract, said corner also being South 52°-58'-20" East a distance of 265.95 feet from a concrete monument set for the northwest corner of the 16.0 acre tract;

THENCE South 20°-39'-15" West a distance of 668.67 feet and set a concrete monument for the southeast corner of the herein described tract on the north right of way line of U.S. Highway 267, said corner also being 60 feet perpendicular to said containing;

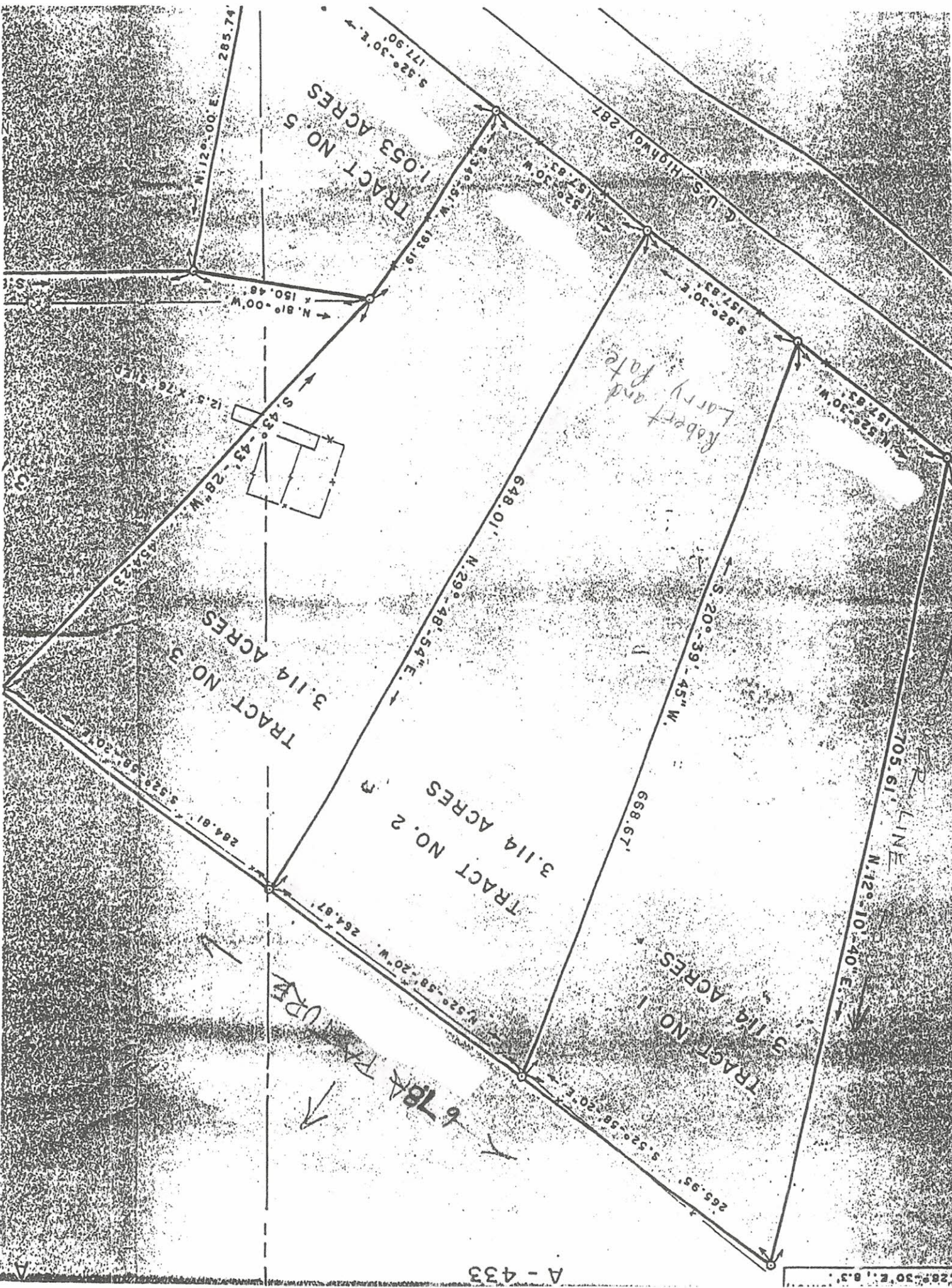
THENCE South 52°-30' East along the north right of way line of U.S. Highway 267 a distance of 157.83 feet and set a concrete monument for the southeast corner of the herein described tract;

THENCE North 29°-18'-54" East a distance of 618.01 feet and set a concrete monument for the northeast corner of the herein described tract on the north line of said 16.0 acre tract;

THENCE North 52°-58'-20" West along the north line of said 16.0 acre tract a distance of 264.87 feet to the POINT OF BEGINNING and containing an area of 3.114 acres of land, more or less.

Exhibit "B"  
Page 1 of 1

I certify that the discrete number microfilm images between the Title Page and the Certificate of Legality and Authenticity have been made in strict accordance with Article 1941 (a), Vernon's Texas Civil Statutes, and that each image is a true, correct, and exact copy of the page, or pages of the identified instrument of writing, legal document, paper or record which had been filed for record on the date and at the time stamped on each; that no microfilm image or images were substituted for any original microfilm image or images between the Title Page and this Certificate, as microfilmed this the 3<sup>rd</sup> day of JANUARY, 1984, from the DEED Records of the County of Tyler, Texas. Starting image no. 429 Page 673.  
GRACE BOSLICK  
Jesse Brooks  
ALTY



TRACT NO. 5  
1.053 ACRES

*Robert and  
Larry late*

TRACT NO. 3  
3.114 ACRES

TRACT NO. 2  
3.114 ACRES

TRACT NO. 1  
3.114 ACRES

R. LINE

U.S. HIGHWAY 287

678A TRACT

A-433

177.90' S. 32°-30' E.  
 285.74' N. 12°-00' E.  
 150.48' N. 81°-00' W.  
 193.19' S. 39°-51' W.  
 157.83' N. 82°-30' W.  
 197.83' N. 52°-30' W.  
 12.5' x 76' SIED  
 43'-43'  
 648.01' N. 29°-48'-54" E.  
 668.67'  
 654.23'  
 264.81' S. 52°-58'-20" E.  
 264.87' N. 52°-58'-20" W.  
 265.95' S. 52°-58'-20" E.  
 705.61' N. 12°-10'-40" E.  
 264.81' S. 52°-58'-20" E.  
 264.87' N. 52°-58'-20" W.  
 265.95' S. 52°-58'-20" E.