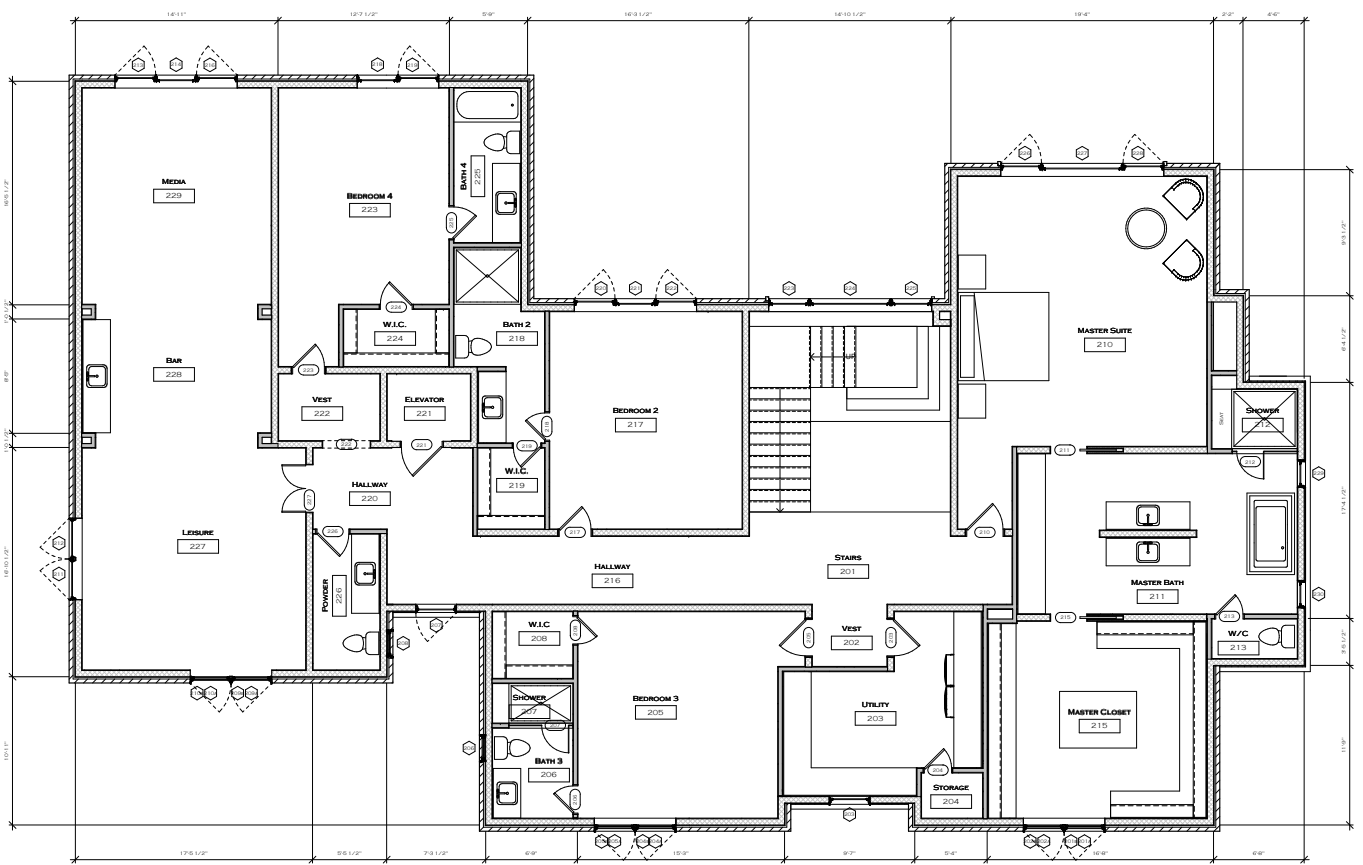


DOOR SCHEDULE 2						
MARK	HEIGHT	WIDTH	HAND	HARDWARE	COMMENTS	
201	8'-0"	2'-0"	LH	BRASS	STANDARD	
202	8'-0"	2'-0"	LH	BRASS	STANDARD	
203	8'-0"	2'-0"	LH	BRASS	STANDARD	
204	8'-0"	2'-0"	LH	BRASS	STANDARD	
205	8'-0"	2'-0"	LH	BRASS	STANDARD	
206	8'-0"	2'-0"	LH	BRASS	STANDARD	
207	8'-0"	2'-0"	LH	BRASS	STANDARD	
208	8'-0"	2'-0"	LH	BRASS	STANDARD	
209	8'-0"	2'-0"	LH	BRASS	STANDARD	
210	8'-0"	2'-0"	LH	BRASS	STANDARD	
211	8'-0"	2'-0"	LH	BRASS	STANDARD	
212	8'-0"	2'-0"	LH	BRASS	STANDARD	
213	8'-0"	2'-0"	LH	BRASS	STANDARD	
214	8'-0"	2'-0"	LH	BRASS	STANDARD	
215	8'-0"	2'-0"	LH	BRASS	STANDARD	
216	8'-0"	2'-0"	LH	BRASS	STANDARD	
217	8'-0"	2'-0"	LH	BRASS	STANDARD	
218	8'-0"	2'-0"	LH	BRASS	STANDARD	
219	8'-0"	2'-0"	LH	BRASS	STANDARD	
220	8'-0"	2'-0"	LH	BRASS	STANDARD	
221	8'-0"	2'-0"	LH	BRASS	STANDARD	
222	8'-0"	2'-0"	LH	BRASS	STANDARD	
223	8'-0"	2'-0"	LH	BRASS	STANDARD	
224	8'-0"	2'-0"	LH	BRASS	STANDARD	
225	8'-0"	2'-0"	LH	BRASS	STANDARD	
226	8'-0"	2'-0"	LH	BRASS	STANDARD	
227	8'-0"	2'-0"	LH	BRASS	STANDARD	
228	8'-0"	2'-0"	LH	BRASS	STANDARD	
229	8'-0"	2'-0"	LH	BRASS	STANDARD	
230	8'-0"	2'-0"	LH	BRASS	STANDARD	
231	8'-0"	2'-0"	LH	BRASS	STANDARD	
232	8'-0"	2'-0"	LH	BRASS	STANDARD	
233	8'-0"	2'-0"	LH	BRASS	STANDARD	
234	8'-0"	2'-0"	LH	BRASS	STANDARD	
235	8'-0"	2'-0"	LH	BRASS	STANDARD	
236	8'-0"	2'-0"	LH	BRASS	STANDARD	
237	8'-0"	2'-0"	LH	BRASS	STANDARD	
238	8'-0"	2'-0"	LH	BRASS	STANDARD	
239	8'-0"	2'-0"	LH	BRASS	STANDARD	
240	8'-0"	2'-0"	LH	BRASS	STANDARD	
241	8'-0"	2'-0"	LH	BRASS	STANDARD	
242	8'-0"	2'-0"	LH	BRASS	STANDARD	
243	8'-0"	2'-0"	LH	BRASS	STANDARD	
244	8'-0"	2'-0"	LH	BRASS	STANDARD	
245	8'-0"	2'-0"	LH	BRASS	STANDARD	
246	8'-0"	2'-0"	LH	BRASS	STANDARD	
247	8'-0"	2'-0"	LH	BRASS	STANDARD	
248	8'-0"	2'-0"	LH	BRASS	STANDARD	
249	8'-0"	2'-0"	LH	BRASS	STANDARD	
250	8'-0"	2'-0"	LH	BRASS	STANDARD	

WINDOW SCHEDULE 2						
MARK	HEIGHT	WIDTH	SILL HEIGHT	HEAD HEIGHT	OPERATION	COMMENTS
201	4'-0"	2'-0"	0"	4'-0"	SLIDING	STANDARD
202	4'-0"	2'-0"	0"	4'-0"	SLIDING	STANDARD
203	4'-0"	2'-0"	0"	4'-0"	SLIDING	STANDARD
204	4'-0"	2'-0"	0"	4'-0"	SLIDING	STANDARD
205	4'-0"	2'-0"	0"	4'-0"	SLIDING	STANDARD
206	4'-0"	2'-0"	0"	4'-0"	SLIDING	STANDARD
207	4'-0"	2'-0"	0"	4'-0"	SLIDING	STANDARD
208	4'-0"	2'-0"	0"	4'-0"	SLIDING	STANDARD
209	4'-0"	2'-0"	0"	4'-0"	SLIDING	STANDARD
210	4'-0"	2'-0"	0"	4'-0"	SLIDING	STANDARD
211	4'-0"	2'-0"	0"	4'-0"	SLIDING	STANDARD
212	4'-0"	2'-0"	0"	4'-0"	SLIDING	STANDARD
213	4'-0"	2'-0"	0"	4'-0"	SLIDING	STANDARD
214	4'-0"	2'-0"	0"	4'-0"	SLIDING	STANDARD
215	4'-0"	2'-0"	0"	4'-0"	SLIDING	STANDARD
216	4'-0"	2'-0"	0"	4'-0"	SLIDING	STANDARD
217	4'-0"	2'-0"	0"	4'-0"	SLIDING	STANDARD
218	4'-0"	2'-0"	0"	4'-0"	SLIDING	STANDARD
219	4'-0"	2'-0"	0"	4'-0"	SLIDING	STANDARD
220	4'-0"	2'-0"	0"	4'-0"	SLIDING	STANDARD
221	4'-0"	2'-0"	0"	4'-0"	SLIDING	STANDARD
222	4'-0"	2'-0"	0"	4'-0"	SLIDING	STANDARD
223	4'-0"	2'-0"	0"	4'-0"	SLIDING	STANDARD
224	4'-0"	2'-0"	0"	4'-0"	SLIDING	STANDARD
225	4'-0"	2'-0"	0"	4'-0"	SLIDING	STANDARD
226	4'-0"	2'-0"	0"	4'-0"	SLIDING	STANDARD
227	4'-0"	2'-0"	0"	4'-0"	SLIDING	STANDARD
228	4'-0"	2'-0"	0"	4'-0"	SLIDING	STANDARD
229	4'-0"	2'-0"	0"	4'-0"	SLIDING	STANDARD
230	4'-0"	2'-0"	0"	4'-0"	SLIDING	STANDARD
231	4'-0"	2'-0"	0"	4'-0"	SLIDING	STANDARD
232	4'-0"	2'-0"	0"	4'-0"	SLIDING	STANDARD
233	4'-0"	2'-0"	0"	4'-0"	SLIDING	STANDARD
234	4'-0"	2'-0"	0"	4'-0"	SLIDING	STANDARD
235	4'-0"	2'-0"	0"	4'-0"	SLIDING	STANDARD
236	4'-0"	2'-0"	0"	4'-0"	SLIDING	STANDARD
237	4'-0"	2'-0"	0"	4'-0"	SLIDING	STANDARD
238	4'-0"	2'-0"	0"	4'-0"	SLIDING	STANDARD
239	4'-0"	2'-0"	0"	4'-0"	SLIDING	STANDARD
240	4'-0"	2'-0"	0"	4'-0"	SLIDING	STANDARD
241	4'-0"	2'-0"	0"	4'-0"	SLIDING	STANDARD
242	4'-0"	2'-0"	0"	4'-0"	SLIDING	STANDARD
243	4'-0"	2'-0"	0"	4'-0"	SLIDING	STANDARD
244	4'-0"	2'-0"	0"	4'-0"	SLIDING	STANDARD
245	4'-0"	2'-0"	0"	4'-0"	SLIDING	STANDARD
246	4'-0"	2'-0"	0"	4'-0"	SLIDING	STANDARD
247	4'-0"	2'-0"	0"	4'-0"	SLIDING	STANDARD
248	4'-0"	2'-0"	0"	4'-0"	SLIDING	STANDARD
249	4'-0"	2'-0"	0"	4'-0"	SLIDING	STANDARD
250	4'-0"	2'-0"	0"	4'-0"	SLIDING	STANDARD

AREA SCHEDULE	
NAME	AREA
1ST FLOOR	10,000.00
2ND FLOOR	10,000.00
3RD FLOOR	10,000.00
4TH FLOOR	10,000.00
5TH FLOOR	10,000.00
6TH FLOOR	10,000.00
7TH FLOOR	10,000.00
8TH FLOOR	10,000.00
9TH FLOOR	10,000.00
10TH FLOOR	10,000.00
TOTAL AREA	100,000.00



1 Anno- 2nd Floor
1/4" = 1'-0"

Richard Goodwin Designs, Inc.
 Residential • Commercial • Light Planning
 Houston, TX 77007
 Phone: 713.669.9991 Fax: 713.669.8000
 www.rgd.com

KYLE HICKS AND EDDY VAN DAMME
NEW RESIDENCE
 7546 INWOOD DRIVE, HOUSTON, TX 77063

4/20/2019 2:14:39 PM
 2018.0025
 Floor Plans

A1.3

ALL RIGHTS RESERVED. NO PART OF THIS DOCUMENT IS TO BE REPRODUCED OR TRANSMITTED IN ANY FORM OR BY ANY MEANS, ELECTRONIC OR MECHANICAL, INCLUDING PHOTOCOPYING, RECORDING, OR BY ANY INFORMATION STORAGE AND RETRIEVAL SYSTEM, WITHOUT THE WRITTEN PERMISSION OF THE ARCHITECT. THE ARCHITECT'S DESIGN IS THE PROPERTY OF THE ARCHITECT AND IS TO BE USED ONLY FOR THE PROJECT AND SITE SPECIFICALLY IDENTIFIED IN THE CONTRACT DOCUMENTS. THE ARCHITECT'S DESIGN IS NOT TO BE USED FOR ANY OTHER PROJECT OR SITE WITHOUT THE WRITTEN PERMISSION OF THE ARCHITECT.



2 Front Elevation
1/4" = 1'-0"



1 Rear Elevation
1/4" = 1'-0"

Richard Goodwin Designs, Inc.
Residential • Commercial • Land Planning
Houston, TX 77029
Phone: 713.609.9991 Fax: 713.609.6001
www.rgd.com

AL
BD
Architect
Professional Seal

7
Architectural
Professional Seal

KYLE HICKS AND EDDY VAN DAMME
NEW RESIDENCE
7546 INWOOD DRIVE, HOUSTON, TX 77063

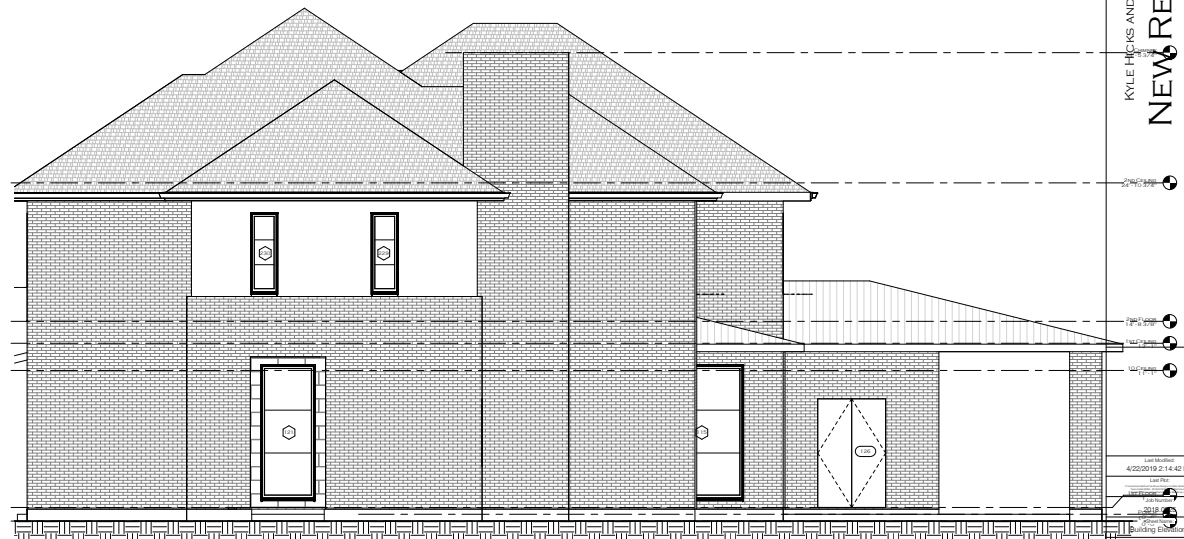
4/20/2019 2:14:41 PM
Last File
2018.0025
Building Elevations

A2.1

THIS DOCUMENT IS THE PROPERTY OF RICHARD GARDNER DESIGN, INC. IT IS TO BE USED ONLY FOR THE PROJECT AND SITE SPECIFICALLY IDENTIFIED HEREIN. ANY REUSE OR MODIFICATION OF THIS DOCUMENT WITHOUT THE WRITTEN CONSENT OF RICHARD GARDNER DESIGN, INC. IS STRICTLY PROHIBITED. THE USER ASSUMES ALL LIABILITY FOR ANY DAMAGE OR INJURY RESULTING FROM THE USE OF THIS DOCUMENT. THE USER AGREES TO HOLD RICHARD GARDNER DESIGN, INC. HARMLESS FROM AND AGAINST ALL SUCH LIABILITY. THE USER AGREES TO INDEMNIFY AND HOLD RICHARD GARDNER DESIGN, INC. HARMLESS FROM AND AGAINST ALL SUCH LIABILITY. THE USER AGREES TO INDEMNIFY AND HOLD RICHARD GARDNER DESIGN, INC. HARMLESS FROM AND AGAINST ALL SUCH LIABILITY. THE USER AGREES TO INDEMNIFY AND HOLD RICHARD GARDNER DESIGN, INC. HARMLESS FROM AND AGAINST ALL SUCH LIABILITY.



① Left Elevation
1/4" = 1'-0"



② Right Elevation
1/4" = 1'-0"

Richard Gardner Designs, Inc.
Residential • Commercial • Land Planning
Houston, TX 77007
Phone: 713.609.9991 Fax: 713.609.8001
info@rgdesigns.com

KYLE HICHS AND EDDY VAN DAMME
NEW RESIDENCE
7546 INWOOD DRIVE, HOUSTON, TX 77063

DATE: 4/20/2019 2:14:42 PM
LAST FILED: 4/20/2019 2:14:42 PM
PROJECT: 190101
JOB: 190101
DRAWING: Building Elevation

A2.2